

The Summer Sale



Schuyler
Rumsey
Philatelic
Auctions

FOR SAN FRANCISCO.

FROM LEWIS WHARF.

The Elegant, First-class, Extreme Clipper Ship

ARCHER

E. R. POWER, COMMANDER.

Is now loading. She is in fine order for the voyage, and being of small capacity, and very fast, will be quickly loaded. Shippers will much oblige by early delivery of their engagements.

For Freight, apply at the California Packet Office, 114 State St., Boston.

Agents at San Francisco, WILLIAMS, BLANCHARD & CO.

Watson's Press, 21 Franklin Street, Boston.

Sale No. 92
June 8-11, 2020

◆
Sale No. 93
June 12, 2020

The Rumsey Summer Auctions

The Summer Sale

Public Auction No. 92

First Session: Monday, June 8, 2020 at 10:00 AM (Lots 1-918)

Second Session: Tuesday, June 9, 2020 at 10:00 AM (Lots 919-1973)

Third Session: Wednesday, June 10, 2020 at 10:00 AM (Lots 1974-2481)

Fourth Session: Thursday, June 11, 2020 at 10:00 AM (Lots 2482-2779)



The Dale Forster Collection of Australian-United States Mails

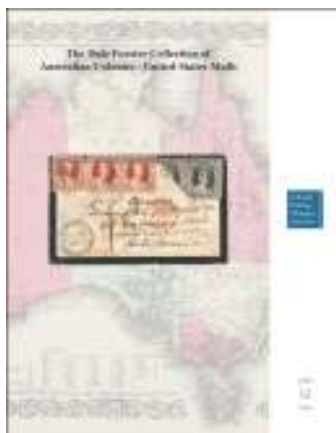
Public Auction No. 93

Friday, June 12, 2020 at 3:00 PM (4001-4216)

(Please note correct new date)

Live Auctions to be held at our San Francisco Galleries

Live auction bidding via Stamp Auction Network (www.stampauctionnetwork.com)



Due to the coronavirus outbreak and the closure of non-essential businesses, Rumsey Auctions has taken additional measures to continue operating and, more importantly, to protect the health of our clients and staff. We have been and will continue to answer calls and emails remotely from our personal residences. We will continue to operate remotely until circumstances change.

Auctions and Bidding: We will continue to run “live” auctions using Stamp Auction Network for online bidding. Public attendance will not be permitted until the restrictions are lifted in San Francisco. As most of our bidders have been using the internet, telephone, book bids and agents in recent years, this change should have no impact on our auctions.

Viewing: There will be no postal viewing or on-premises viewing for this scheduled auction unless businesses are permitted to be open. We have endeavored to scan all group and collection lots in these auctions. They are available for viewing online, which will enable clients to properly value all lots in these auctions.

Payments: We continue to accept all forms of payment including paper checks, credit cards, paypal and wire transfers, each with corresponding fees. If you have any questions about payment, please contact us at the office.

Shipment of Property: We will ship lots as soon as possible after the auction or payment. We ask for your patience and cooperation with this process due to the extenuating circumstances.



SCHUYLER J. RUMSEY

Philatelic Auctions, Inc.

47 Kearny St., Suite 500

San Francisco, CA 94108, USA

Telephone: 415-781-5127 Fax: 415-781-5128

E-mail: srumsey@rumseyauctions.com

Catalogs, Internet Bidding and Resources at our Website: www.rumseyauctions.com

The Summer Sale

Public Auction No. 92

First Session: Monday, June 8, 2020 at 10:00 AM

Second Session: Tuesday, June 9, 2020 at 10:00 AM

Third Session: Wednesday, June 10, 2020 at 10:00 AM

Fourth Session: Thursday, June 11, 2020 at 10:00 AM

The Dale Forster Collection of Australian-United States Mails

Public Auction No. 93

Friday, June 12, 2020 at 3:00 PM

Live Auction to be held at our San Francisco Galleries



Presale Viewing: By appointment only in our offices, circumstances permitting

Live auction bidding via Stamp Auction Network (www.stampauctionnetwork.com)



SCHUYLER J. RUMSEY

Philatelic Auctions, Inc.

47 Kearny St., Suite 500

San Francisco, CA 94108, USA

Telephone: 415-781-5127 Fax: 415-781-5128

E-mail: srumsey@rumseyauctions.com

Catalogs, Internet Bidding and Resources at our Website: www.rumseyauctions.com

Catalog Price \$20

The Rumsey Auction Team



Schuyler J. Rumsey
President



Scott Wieduwilt
Vice President



Matthew W. Kewriga
Vice President

Bidding Increments

\$10-\$300 \$10	\$3,000-\$7,500 \$250	\$75,000-\$150,000 \$5,000
\$300-\$750 \$25	\$7,500-\$15,000 \$500	Over \$150,000 Auctioneer's discretion
\$750-\$1,500 \$50	\$15,000-\$30,000 \$1,000	
\$1,500-\$3,000 \$100	\$30,000-\$75,000 \$2,500	

Recommended Auction Agents

Charles E. Cwiakala
1527 S. Fairview Avenue
Park Ridge, IL 60068-5211
Tel./Fax: (847) 823-8747
Email: CECwiakala@aol.com

Frank Mandel
P.O. Box 157
New York, NY 10014
Tel: (212) 675-0819
Fax: (212) 366-6462
Email: busybird1@me.com

Pursers and Associates
P.O. Box 369
Bronxville, N.Y. 10708
Tel: (857) 928-5140
Fax: (781) 658-2567
Email: info@pursers.com

Giacomo Bottacchi
Via Filli Bronzetti 21
Milano 20129
Italy
Tel: (02) 718-023
Fax: (02) 738-4439
Email: gbstamps@iol.it

Jochen Heddergott
Bauerstrasse 9
D-8000 München 40
Germany
Tel: (089) 272-1683
Fax: (089) 272-1685
Email: mail@philagent.com

Nick Martin
Angel House, Station Road
Lincolnshire PE20 2JH
United Kingdom
Tel: (44) 120 546-0968
Cell: (44) 0770 376-6477

Trevor Chinery
9 St. Laurence Way, Stanwick
Northamptonshire NN9 6QS
England
Tel: (044) 1205 330 026
Fax: (044) 1933 622 808
Email: TrevorTrilogy@aol.com

Symbols

**	Mint (never hinged)	☒	Cover	S	Specimen
*	Mint (hinged)	(☒)	Cover Front	//	Incomplete Set
(*)	Mint (no gum/regummed)	B	Booklet or Booklet Pane	▲	On Piece
o	Used	E	Essay		
☐	Block	P	Proof		

Grading and Condition

Superb	Extraordinary item in the finest condition.
Extremely Fine	Outstanding and exceptional quality.
Very Fine	Choice, first-class condition.
Fine-Very Fine (F-VF)	Stamp or cover in sound condition; if a stamp, it is slightly less well-centered than Very Fine but better centered than Fine.
Fine	Sound in all respects. Perforated stamps will have the designs clear of the perforations; the designs of imperforate stamps will not be cut in to any significant degree.
Very Good (VG)	Imperfect centering (stamps) or poor general appearance.

Any stamp faults such as a thin spot, tear, crease etc., will be described at all times. Postally used covers should be expected to have the normal degree of wear associated with them and this wear is not grounds for return. The grade of a cover is independent of the grade of the stamps on it. Covers from the famous Carroll-Hoy correspondence will normally have a small unobtrusive staple hole. In lots containing several items, degrees of condition denote the overwhelming average and examples above and below such condition can be expected.

Terms of Sale

Bidding

I. All bids (whether by floor bidders, mail bidders, or telephone bidders) will have a premium of 15% added to the auction sale price.

II. All bids are per lot as numbered in the catalog unless otherwise announced by the auctioneer at the time of sale. The right is reserved to withdraw any lot prior to sale, to divide a lot, or to group two or more lots, or to act on behalf of the seller. Schuyler Rumsey Philatelic Auctions, Inc. will execute bidding instructions on behalf of clients, but will not be responsible for any errors in the execution of such bids. Schuyler Rumsey Philatelic Auctions, Inc. is not liable for bidding errors related to live auction internet bidding and/or the loss of internet connection during the live auction.

III. The highest bidder shall prevail; lots are sold at one increment over the second highest bid. Should any dispute arise between bidders, the decision of the auctioneer as to the successful bidder and the reoffering or resale of the lot under dispute shall rest entirely on the judgment of the auctioneer. The auctioneer shall regulate the bidding and reserve the right to refuse any bid believed by him not to be made in good faith.

IV. Consignor has and retains the right to bid personally, or by his duly appointed agent, through the auctioneer, unless the sale is advertised and announced as one restricting such bidding by consignors or their agents.

Payments of Purchases

V. FLOOR BIDDERS. Floor bidders shall furnish the auctioneer their names and addresses prior to bidding on any lot. The name and address of the buyer of each lot shall be registered with the auction house following the sale of each lot. Payment of the whole purchase price shall be made by the floor buyer in such manner as the auctioneer may determine. Special credit arrangements must be made prior to the sale.

VI. MAIL BIDDERS. A successful mail bidder will be notified of lots purchased and must remit payment before the lots are sent. Auction bills are due and payable upon receipt of notification. If buyer's payment is not received within ten (10) days, Schuyler Rumsey Philatelic Auctions, Inc. may resell all lots without notice. Any and all losses incurred as a result of resale will be passed on to the defaulting buyer. Cost of postage, registration, etc. will be charged to buyer. Proof by the auctioneer of receipt of sending at the advised address shall constitute delivery.

VII. DIRECT DRAFTS/TRANSFERS. A successful mail bidder known to us may contact our office at (415) 781-5127 for the information necessary to pay directly into the vendor bank account. Any additional charges resulting from processing payments by this method shall be borne by the buyer. Method of payment should be noted on the bid sheet.

VIII. Title shall not pass to the buyer until full payment is received by Schuyler J. Rumsey Philatelic Auctions, Inc.

IX. All of our lots are sold as genuine. Lots accompanied by recent (within 5 years of sale date) expert certificates are sold "as is" based on the description in the certificate. The aforementioned expertized lots may not be returned under any circumstances including those instances in which subsequent certificates yield conflicting opinions. The accepted authorities for U.S. stamps are the Philatelic Foundation (P.F.), the Philatelic Stamp Authentication and Grading, Inc. (P.S.A.G.) and the Professional Stamp Expertizing Committee (P.S.E.), however we do not accept "graded certificates", nor do we accept "encased" certified items.

X. The Auctioneer must be notified within 5 business days from the date of the auction of any request to place a lot on extension for expertizing. All extensions must be paid in full, in advance. There will be no exceptions and no lots may be returned under any circumstances if this term has not been strictly followed.

XI. All lots on extension must be submitted for expertizing by the auctioneer exclusively. Each lot is sold as genuine, except those described "as is", but when, in the opinion of a competent authority acceptable to Schuyler J. Rumsey Philatelic Auctions, Inc., the lot is declared otherwise, the purchase price will be refunded in full. The lot must be received by Schuyler J. Rumsey Philatelic Auctions, Inc. within a period of 21 days from the date of auction. Expenses incurred for purposes of expertizing shall be borne by the purchaser except where the lot is found by said competent authority to be materially not as described, in which case the consignor will be responsible for expertizing costs incurred. Proof of the inability of said competent authority to express a definite opinion is not grounds for return of an item.

XII. Any lot, description of which is incorrect, is returnable (A) within three (3) days of receipt and (B) if received by Schuyler J. Rumsey Philatelic Auctions, Inc. within twenty-one (21) days from the date of the auction. All disputed lots must be returned intact, in the condition received; no adjustments will be made. The following lots are not returnable: lots containing ten (10) or more items; lots from purchasers OR THEIR AGENTS who had the opportunity to examine them before the auction; items described as having defects or of a quality standard "Very Good" (V.G.) or below; lots with disputed centering or margins when the item is photographed; lots described "as is".

XIII. JURISDICTION. In the event of any dispute between the auctioneer and bidders, or between any parties requesting inspection of any of the lots and the auctioneer, or between persons offering their lots to be auctioned and the auctioneer, the jurisdiction over the dispute shall be in the City and County of San Francisco, State of California.

XIV. In the event of any dispute, the prevailing party shall be entitled to court costs and reasonable attorney's fees.

XV. The California State Sales Tax - or that of another state as ordered by the laws of such a state (as appropriate) - is payable by buyers liable to tax. See below.

Sales Tax

This sale will be held in California and the buyer will be liable for any applicable sales tax for this auction. Any lots purchased by buyers in California or that of another state as ordered by the laws of such a state are subject to State Sales Tax unless:

1.) You have a verifiable resale license number, which must be on file with us prior to the Auction.

OR

2.) You are not a California resident or that of another state as ordered by the laws of such a state are subject to State Sales Tax and your lots are being shipped to your out-of-state or out-of country mailing address.

XVI. THE PLACING OF A BID SHALL CONSTITUTE ACCEPTANCE OF THE FOREGOING TERMS OF SALE.

Additional Auction Information

Due to the coronavirus outbreak and the closure of non-essential businesses, Rumsey Auctions has taken additional measures to continue operating and, more importantly, to protect the health of our clients and staff. We have been and will continue to answer calls and emails remotely from our personal residences. We will continue to operate remotely until circumstances change.

Auctions and Bidding: We will continue to run “live” auctions using Stamp Auction Network for online bidding. Public attendance will not be permitted until the restrictions are lifted in San Francisco. As most of our bidders have been using the internet, telephone, book bids and agents in recent years, this change should have no impact on our auction. .

Viewing: There will be no postal viewing or on-premises viewing for this scheduled auction unless businesses are permitted to be open. We have endeavored to scan all group and collection lots in this auction. They are available for viewing online, which will enable clients to properly value all lots in this auction.

Payments: We continue to accept all forms of payment including paper checks, credit cards, Paypal and wire transfers, each with corresponding fees. If you have any questions about payment, please contact us at the office.

Shipment of Material: We will ship lots as soon as possible after the auction or payment. We ask for your patience and cooperation with this process due to the extenuating circumstances.

Extensions: Lots for certification by The Philatelic Foundation, Professional Stamp Experts or other expert committees will be done as expeditiously as possible and will be submitted only by Rumsey Auctions as per our Terms of Sale.

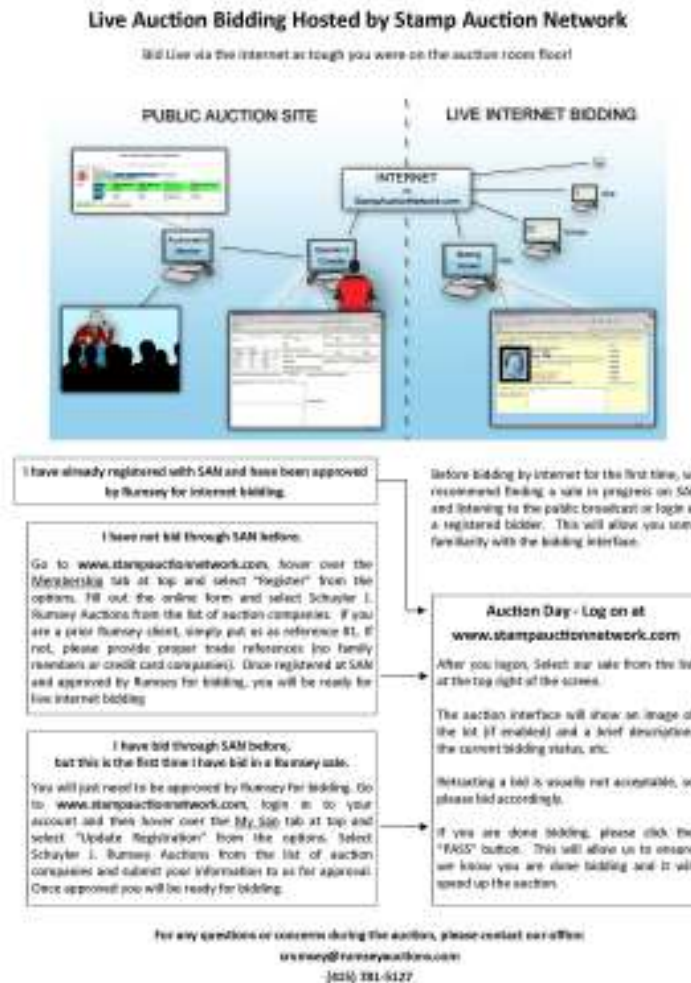


Table of Contents

First Session

Monday, June 8, 2020, at 10:00 A.M.

1-83	Stamp Boxes
84-157	Great Britain and British Commonwealth: Australia to New Guinea
158-359	Great Britain and British Commonwealth: The Dr. David Patterson New Zealand Part II
360-373	Great Britain and British Commonwealth: Nieu to Zululand
374-457	General Foreign - Austria to Liberia
458-566	General Foreign - Specialize Mexico
567-584	General Foreign - Mongolia to Salvador
585-659	General Foreign - Specialized Classic Serbia
660-674	General Foreign - Thailand to Venezuela
675-705	Worldwide Airmail Postal History
706-780	U.S. Postal History - Clipper Cards, California, Westerns and Western Express
781-814	U.S. Postal History - State Postal History, Free Franks, Railroads etc
815-918	U.S. Postal History - Steamboats, Inland Waterways and Steamships

Second Session

Tuesday, June 9, 2020, at 10:00 A.M.

919-1087	U.S. Postal History - The James Baird Collection of Postal History featuring American Flag Steamships
1088-1175	U.S. Postal History - Transatlantic, Foreign & Transpacific Mail, Paquebot Mail, NY Supplementary Mail
1176-1241	U.S. Postal History - Military & War Related, Advertising & Illustrated, Fancy Cancels
1242-1369	U.S. Postal History - Regular Issues
1370-1453	U.S. Postal History - The Robert Schlesinger Collection of Prexie Issue Postal History
1454-1508	U.S. Postal History - Later 20th Century, Back of the Book incl. Airmail & Balloon Mail, Offices in China
1509-1760	U.S. Postage Stamps - 19th Century from Postmasters' Provisionals to 1898 Trans-Mississippi Issue
1761-1835	U.S. Postage Stamps - 20th Century
1836-1973	U.S. Postage Stamps - Back-of-the-Book Issues

Third Session

Wednesday, June 10, 2020, at 10:00 A.M.

1974-2120	U.S. Postage Stamps - Revenues including the Dan Richards Collection Part I
2121-2268	U.S. Postage Stamps - Specialized Patent Medicine Stamps
2269-2291	U.S. Postage Stamps - Revenues - Duck Stamps, Encased Postage
2292-2481	United States - Civil War & Confederate States of America

Fourth Session

Thursday, June 11, 2020, at 10:00 A.M.

2482-2599	United States Possessions - Canal Zone, Danish West Indies, Guam
2600-2752	United States Possessions - Hawaii
2753-2779	United States Possessions - Philippines, Puerto Rico, Ryukyus, Samoa

Stamp Boxes

Gold & Silver Stamp Boxes



1 **Gold Case**, 14kt gold case (33x25mm), envelope design with red enamel U.S. 2c Washington stamp canceled by New York postmark, top side opening backflap with single compartment and transit postmark on reverse, marked "Pat June 24 90, 14k".
Estimate \$600 - 800



2 **Silver Box**, sterling stamp box (69x33mm), inset fine enamel reproductions of Great Britain 1881 1d lilac, 1887 1/2d Jubilee & 2 1/2d purple on blue stamps, each with Manchester face free town corner cancel, hinged front opening top and three concave stamp compartments, full gold wash interior; London 1899, very rare.
Estimate \$2,000 - 3,000



3 **Silver Box, Adie & Lovekin Ltd. (Birmingham) 1908**, sterling novelty stamp box (65x30mm), modeled as Cupid and pull cart, hinged top lid windowed showing G.B. 1d stamp, single compartment, extremely rare, one of the most sought after designs.
Estimate \$2,000 - 3,000



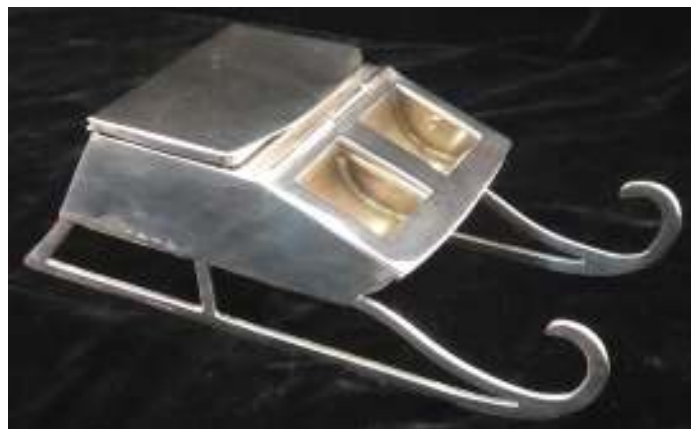
4 **Silver Box, Samuel Jacob (London) 1895**, sterling stamp box and match case combination (40x290mm), novelty golf club form, match striker on side of club head, hinged lid on top of club head opening to gold wash compartment for matched and inner lid bracket for stamp, an extremely rare design.
Estimate \$2,000 - 3,000



5 **Silver Box, Adie & Lovekin Ltd. (Birmingham) 1909**, sterling novelty stamp box (65x30mm), modeled as elephant and pull cart, elephant with a small pin cushion set into back, hinged spring closing top lid windowed showing G.B. 1d stamp, single gold wash compartment, extremely rare, one of the most sought after designs.
Estimate \$1,500 - 2,000



6 **Silver Box, J. Rodgers (Sheffield) 1900**, sterling stamp box and inkwell combination (54x76mm), novelty coal scuttle form, hinged front opening lid with single sloped gold wash compartment, hinged front opening top revealing glass inkwell, very fine and very rare, *ex-Paris Collection*.
Estimate \$1,500 - 2,000



8 **Silver Box, Cornelius Saunders & Francis Shepherd (Birmingham) 1910**, sterling stamp box and inkwell combination (55x140mm), **novelty sleigh form**, sloping front with spring back hinge front opening lid with two window insets, opening to two gold wash curved compartments, top hinged lid opening to two glass inkwells, curved sleigh blades at front serving as a pen rest, very fine and rare.
Estimate \$1,000 - 1,500



7 **Silver Box, Crisford & Norris (Birmingham) 1908**, sterling silver stamp box and ivory letter opener combination (35x225mm), **novelty golf club form**, club head with a hinged lid at top opening to a single concave compartment, an extremely rare design and one of the most sought after boxes missing from most of the great collections that have come on to the market.
Estimate \$1,500 - 2,000



9 **Silver Box, Cornelius Saunders & Francis Shepherd (Birmingham) 1908**, sterling stamp box, inkwell and watch combination (71x90mm), in **lantern form with handle**, single pull out stamp drawer on right side of base, central Swiss watch (in working order) inside lamp glass, hinged front opening top revealing inkwell compartment, with monogram and "May 1st, 1919" date engraved at top, very fine and rare.
Estimate \$1,000 - 1,500



10 **Silver Box, Adie & Lovekin Ltd. (Birmingham) 1908**, sterling novelty stamp box (65x27mm), modeled as a wheelbarrow, hinged top lid windowed showing G.B. 9d stamp, single gold wash compartment, very rare, one of the most sought after designs.
Estimate \$750 - 1,000



13 **Silver Box, George W. White & Co. (London) 1902**, sterling stamp box (88x37mm), sloped front and balled feet at base, three individual hinged windowed lids each bearing a different Great Britain stamps, each opening to a ramped compartment and gold wash interior, rare.
Estimate \$500 - 750



11 **Silver Box**, sterling traveling stamp and double inkwell combination box (117x40mm), with lift up pen rest, plain form, three hinged front opening lids with colored glass window insets, each with square push button clasp on front, red and blue glass side lids open to matching color ink bottles, central yellow glass lid to gold wash ramp stamp compartment, marked "London 1895", very rare and unusual.
Estimate \$750 - 1,000



14 **Silver Box, Deakin & Francis (Birmingham) 1904**, sterling stamp and moister combination box (77x60mm), quatrefoil design with framed glass window bearing G.B. 1/2d KGV stamp, hinged front opening top, central single concave compartment and moistening sponge at either side, gold wash interior and leather inner lid inset, very rare.
Estimate \$500 - 750



12 **Silver Box, Cornelius Saunders & Francis Shepherd (Birmingham) 1909**, sterling stamp box, watch and pen rest combination (95x136mm), plain front sloping form, front with hinged front opening lid with window insets displaying stamps, three gold wash curved compartments, central watch (in working order) and pen rest at back, very fine and rare.
Estimate \$750 - 1,000

15 **Silver Box, London 1896**, sterling stamp box (51x31mm), inset windowed lid displaying two different Great Britain stamps, hinged front opening top, two sloped compartments, gold wash interior.
Estimate \$400 - 600

16 **Silver Box, George W. Shiebler & Co. (New York, N.Y.)**, sterling stamp box (105x37mm), allover pierced scroll & floral design, hinged front opening lid, four sloped compartments, marked sterling.
Estimate \$400 - 600

17 **Silver Box, George Betjemann & Sons (London) 1923**, sterling stamp box and inkwell combination (75x106mm), plain desktop style, front hinged pull down curved lid with three pocket style compartments on reverse of lid, additional wood inlay curved compartment inside, curved pen rest behind lid, top with balled hinged lid opening to inkwell, handsome.
Estimate \$400 - 600

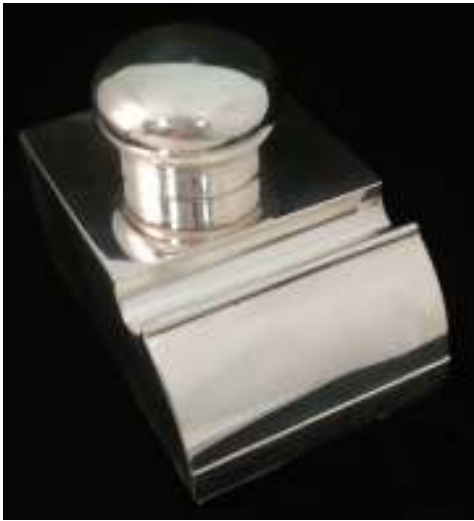
Stamp Boxes



15



16



17



18



19



20



21

- 18 **Silver Box, Walker & Hall (Birmingham) 1910**, sterling stamp box (26x36mm), novelty coal scuttle form, hinged front opening windowed lid, single sloped compartment, most attractive.
Estimate \$300 - 400
- 19 **Silver Box**, silver plated stamp dual roll coil dispenser (100x54mm), inset enamel U.S. 1923 2¢ and 3¢ Washington issues with wavy line cancels and "AMC" monogram, hinged front opening lid, dual spindles and gold wash interior.
Estimate \$300 - 400

- 20 **Silver & Glass Box, Foster & Bailey (Providence, R.I.)**, Silver & Glass Box. Sterling and cut glass box (96x51mm), base with etched floral banners and cut rays at bottom, white guilloche and floral enamel lid with silver rim, hinged front opening and two ramped compartments, velvet lined inner lid, very unusual design.
Estimate \$300 - 400
- 21 **Silver Box, Levi & Salaman (Birmingham) 1901**, sterling stamp box (90x38mm), trough form on balled feet, raised scroll pattern lid with three window insets displaying stamps, springback hinged front opening lid, three concave gold wash compartments, scarce.
Estimate \$250 - 350



22



23



24



25



29



30

22 **Silver Box, Deakin & Francis (Birmingham) 1898**, sterling stamp box (82x40mm), inset windowed lid displaying three Great Britain stamps, flared base, spring hinged front opening top, three gold wash ramped compartments, scarce.

Estimate \$200 - 300

23 **Silver Box**, sterling stamp case (53x31mm), raised reclining women and cherub central design with scroll and floral embellishments, side opening top and double ramped gold wash compartments (wash slightly worn).

Estimate \$150 - 200

24 **Silver Box, Deakin & Francis (Birmingham) 1902**, sterling stamp box (62x40mm), front with spring closing lid with beveled window top, two ramped gold wash compartments, most attractive.

Estimate \$150 - 200

25 **Silver Box, George W. Shiebler & Co. (New York, N.Y.)**, sterling stamp box (83x41mm), raised ornate floral and scroll patterns, wide brim lid and flared feet, hinged front opening lid, three sloped gold wash compartments, marked sterling.

Estimate \$150 - 200



26 **Silver Case, Harrison Brothers & Howson (Sheffield) 1890**, sterling stamp and match case (65x32mm), front end side opening spring pressure single slide stamp compartment, red enamel U.S. 1890 2¢ Small Banknote facsimile on lid, bottom end opening stamp striker with match compartment, pendent ring at top.

Estimate \$2,000 - 3,000



27

Silver Case, Robert Hennell IV (London) Mark, 1869, sterling "MacNeill's Patent Stamp Applicator" case (21x26mm), top with raised profile of Queen Victoria, with "Patent" and "M" monogram for MacNeill below, sides with engine turned design, a very early example in choice condition, this earliest recorded silver stamp case, pre-dating the commercial production of silver stamp case by about 10 years.

Estimate \$1,000 - 1,500

AN EXTREMELY RARE AND EARLY VICTORIAN SILVER "MACNEILL'S PATENT STAMP APPLICATOR".

This patent mechanism consists of two sprung plates, which holds a stack of stamps against restraining flanges at the bottom, The original patent describes the applicator's operation... "The letter is damped slightly by the tongue or otherwise; the case is then laid on the letter, and at the same time pressure of the finger is applied to the top, so as to press the follower down, and consequently the stamp, on to the part of the letter or document which has been previously damped; when this is done the pressure of the finger is removed and the case lifted up, the adhesive matter on the stamp causing it to be withdrawn from the small retaining flanges of the case, and be thus left adhering to the surface of the letter. The postage or other stamps are thus presented ready for being applied in quick succession and with great facility to any number of letters".



31



Ex 32



33



34



36



37



28 **Silver Case, Horton & Allday (Birmingham) 1913**, sterling silver and leather purse and stamp case combination (109x50mm), skillfully executed inset enamel fox hunting scene, hinged wallet style with inside button clasp, inside green leather with three pockets, rare.
Estimate \$400 - 600

29 **Silver Case**, sterling stamp case (42x30mm), envelope design with intricate inset floral design on front and reverse, violet enamel G.B. 1881 1d QV stamp, side flip opening with single compartment.
Estimate \$300 - 400

Silver Stamp Boxes - 1893 Columbian Exposition

30 **Silver Case, 1893 Columbian Exposition**, sterling stamp case (43x37mm), circular frame holder with **1893 Columbian Half Dollar**, ball clasp front opening with two back-to-back clip holders.
Estimate \$200 - 300

31 **Silver Case, 1893 Columbian Exposition**, sterling stamp case (44x30mm), scroll frame top with **U.S. 1¢ Columbian** mint issue under mica, side spring closing top and single ramped compartment, marked pat. applied & sterling.
Estimate \$200 - 300

32 **Silver Cases, 1893 Columbian Exposition**, three different silver plated cases; two mail box style one with Columbus portrait, other with "Nina, Pinta & Santa Maria" raised view, also includes an silver souvenir bag tag.
Estimate \$200 - 300

33 **Silver Case, 1893 Columbian Exposition**, silver plated stamp case (40x30mm), with raised "Landing of Columbus" design on both sides, side opening with single compartment, side pendent ring.
Estimate \$100 - 150

34 **Silver Case, 1893 Columbian Exposition**, silver plated stamp case (40x30mm), with raised "Landing of Columbus" design on both sides, side opening with single compartment.
Estimate \$100 - 150

Various Materials



35 **Bronze Box, Komai of Kyoto**, bronze stamp box (45x45mm), elaborate inset black enamel inlay bird design with floral inlay sides, hinged front opening top and brass single ramped compartment with floral motif at bottom.
Estimate \$200 - 300

36 **Bronze Box, Tiffany Studios (New York, N.Y.)**, bronze stamp box (94x48mm), plain rectangular form with raised Zodiac motifs on lid and patterned sides, hinged lid opening to three concave compartments.
Estimate \$150 - 200



38



39



40



41



42



43

- 37 **Brass Box**, brass stamp box (75x44mm), intricate engraved scroll patterning on top and side, with two glass framed windows bearing Great Britain 1864-68 1d red & 2d blue QV stamp issues, hinged front opening top and two compartments.
Estimate \$250 - 350
- 38 **Porcelain Box**, French Limoges stamp box and matching letter holder (87x46mm & 153x47mm), each with raised gold floral scrolling and various brownie caricatures, stamp box with pull off top and three ramped compartments, one with painted 2¢ "Brownie Postage" stamp.
Estimate \$500 - 750
- 39 **Porcelain Box**, "T&V France" Limoges stamp box (110x64mm), butter dish form with floral accents and gilded trim and lid handle, three bracketed compartments, one with matching floral design.
Estimate \$150 - 200
- 40 **Porcelain Box**, German stamp box (110x64mm), sloped butter dish form, with "Lincoln Academy, Newcastle, Me." view on lid, three bracketed compartments.
Estimate \$150 - 200
- 41 **Tortoiseshell Box**, tortoiseshell stamp box (80x35mm), lid with three inset windows showing different Great Britain stamps, sterling push button clasp and hinged front opening top, three polished ramped wooden compartments, rare.
Estimate \$300 - 400
- 42 **Tortoiseshell Box**, tortoiseshell lined wood stamp box (92x50mm), plain rectangular form with tortoiseshell lined hinged lid and sides, top with silver inlay wreath and bordering, three ramped compartments.
Estimate \$300 - 400
- 43 **Ivory Box**, ivory stamp box (81x36mm), lid paint with lovers in woodland scene, sides with floral and ribbon embellishments, hinged front opening lid and three ramped compartments, French ca. 1890.
Estimate \$300 - 400

- 44 **Paper "The Wonderland Postage-Stamp Case"**, lined reinforced case (80x105mm) with lithographed Alice and Child on one side and Cheshire Cat on other, pull out stamp folio with spaced for various stamp denominations ½d to 1sh, reverse with "Invented by Lewis Carroll" imprint, choice condition.
Estimate \$150 - 200

Stamp Box Collections

- 45 **Silver Box Balance**, 13 sterling stamp boxes; various styles from single to multiple compartment boxes, one with tortoiseshell lid, two coil roll dispensers; attractive group.
Estimate \$1,000 - 1,500
- 46 **Silver Box Balance**, of 12 items, mostly sterling; includes a number of monogram lid boxes, "U.S. Mail" including one shaped as mail box, coil roll dispenser with poodle figure on lid, inkwell combination, ornate desk set missing ink well, etc.
Estimate \$300 - 400
- 47 **Silver Case Balance**, 26 sterling cases; various styles including many envelope designs with enamel stamp, U.S. stamp designs, "Stamps" logo, 23 stamp cases and three match cases; attractive group.
Estimate \$1,500 - 2,000
- 48 **Silver Case Balance**, of 30 sterling and silver plated cases; wide variety of designs including letter and postcard designs, one with enamel stamp, Columbian Exposition, "U.S. Mail" mail bag, 1883 2¢ Banknote stamp, ball clasp purse, eagle and four leaf clover motifs, advertising, etc.; some wear on several but an excellent range of designs, some duplication.
Estimate \$500 - 750
- 49 **Silver Floral Cases**, 7 different sterling floral embellished silver cases, most with raised female and/or cherub designs, all side top opening and single compartments.
Estimate \$300 - 400

Stamp Boxes



44



Ex 45



Ex 46



Ex 47



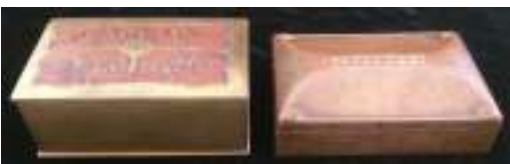
Ex 48



Ex 49



Ex 50



Ex 51



Ex 52



Ex 53

- | | |
|--|--|
| <p>50 Bronze and Brass Box Balance, of 7 boxes; includes four bronze Arts & Craft style boxes, three with sterling silver inlay, similar brass box and on brass match case with enamel top; attractive group.
 Estimate \$500 - 750</p> <p>51 Brass Box Balance, of 17 boxes; nice range of styles and designs including art nouveau, arts and crafts, Indian, dog and mouse motifs, various floral and scroll designs including wooden inlay top, three China enamel, modern pattern top design with matching clip calendar, etc.
 Estimate \$500 - 750</p> <p>52 Wooden Box Balance, of 26 boxes; wide range of styles including four different U.S. tourist boxes with various views on lid, three Swiss hand carved tourist boxes, leather wrapped, Tunbridgeware, folk art with boxer dog holding letter in mouth, inkwell combination, coil roll dispensers, couple hand-painted lids and a few papier-mâché items.
 Estimate \$400 - 600</p> | <p>53 Porcelain Stamp Box Balance, of 9 items each with pull off lid; two coil roll dispensers and balance for single stamps, range of multicolored designs and embellishments, one Dresden pottery item and two Japanese made.
 Estimate \$300 - 400</p> <p>54 Stamp Box & Case Balance, of 14 items; includes ivory box, tortoiseshell box, 6 Tartanware & Tunbridge wood boxes, porcelain box, papier-mâché box, two silver desk sets and a gold plated sterling match case; diverse group.
 Estimate \$750 - 1,000</p> <p>55 Stamp Box & Case Balance, mix of 18 items; includes a number of metal boxes including a couple arts & craft style items, sleeping dog, tourist including San Francisco Cliff House, "U.S. Mail" coil roll dispenser in scrimshaw style, Rookwood letter holder bearing 1847 5¢ Issue facsimile, etc.
 Estimate \$300 - 400</p> |
|--|--|

Stamp Dispensers

- 56 **Silver Stamp Dispenser, William Hornby (London) 1902**, sterling Lantz's patent stamp dispenser (81mm tall) with ivory handle, rare.
Estimate \$400 - 600
- 57 **Silver Coil Roll Dispenser, William James Hornby (London) 1903**, sterling single coil roll dispenser (61x46mm), rounded cubed form on base, open window top and front dispensing slit, hinged side opening at base and gold wash interior, marked "Pat. App. For", rare in single format.
Estimate \$500 - 750
- 58 **Silver Coil Roll Dispenser, William James Hornby (London) 1902**, sterling double coil roll dispenser (75x51mm), rounded cubed form on base, two open window tops and front dispensing slits, hinged side opening at base and gold wash interior, marked "Pat. App. For", very scarce.
Estimate \$400 - 600
- 59 **Silver Coil Roll Dispenser, London 1904**, sterling coil roll dispenser (48x48mm), English post box for with monogram on front, open window top and front dispensing slit, few minor ding's and base struck.
Estimate \$300 - 400
- 60 **Silver Coil Dispenser, Revere Silversmiths (Brooklyn, N.Y.)**, sterling stamp coil dispenser & moister combination (31x31mm), with moister container lid, "U.G." monogram on side, marked sterling.
Estimate \$150 - 200

Desk Sets



- 61 **Silver Desk Set, Grey & Co. (London) 1908**, sterling stamp box, inkwell and semi-circular calendar combination (132x120mm), four inset window lid in front displaying stamp, hinged opening to four concave compartments, circular hinged lid at center opening to inkwell compartment with pen rest brackets at sides, calendar headboard with rotating days and bracket at bottom for month cards, very fine and rare.
Estimate \$1,000 - 1,500



- 62 **Silver Desk Set, William Neale (Chester) 1900**, sterling stamp box and inkwell combination (143x79mm), box form on roped bordered tray with railings on three sides, central inkwell with hinged lid, stamp boxes at sides with inset windowed lids displaying stamps, hinged front opening with single gold wash concave compartments, very fine and rare.
Estimate \$750 - 1,000



- 63 **Silver Desk Set, Birmingham 1911**, sterling and lead crystal cut glass stamp box, inkwell and watch combination (65x108mm), pen rest in front, stamp box with hinged front opening lid and two ramped compartments, watch (in working order) on hinged swivel bracket used as lid opening (and swivels upright) to show inkwell, rare.
Estimate \$600 - 800

- 64 **Silver Desk Set, Birmingham 1912**, sterling stamp box, inkwell, stamp moistener and calendar combination (130x45mm), plain desk set form with faired feet, with center glass roller moistener, left hinged lid opening to single ramped compartment, right lid opening to inkwell, calendar bracket at rear with complete set of cards showing day, date and month, pen rest brackets in front.
Estimate \$500 - 750

Stamp Boxes



Ex 54



Ex 55



56



59



60



57



58



64

Stamp Boxes



66



67



68



72



73



Ex 76



77



75



Ex 78



65 **Silver Desk Set, Gorham Mfg. Co. (Providence, R.I.) 1887**, sterling stamp box and ink well holder combination (195x110mm) plain base with bracket feet, pierced railing design, central stamp box with raised swirl on hinged lid, two concave compartments, inkwell insets at either side with glass inkwells with silver hinged lids, inset pen rest in front.
Estimate \$500 - 750

66 **Silver Desk Set, H. Matthews (Birmingham) 1909**, sterling stamp box, inkwell and calendar combination (90x104mm), front hinged pull down lid with engraved "Stamps" in script, three side out compartments on reverse of lid, central hinged "Ink" lid front opening revealing two glass inkwells, calendar with celluloid pull out tabs for month and rotating mechanical pull down tabs at sides for the day, very attractive.
Estimate \$400 - 600

67 **Silver Desk Set, Birmingham 1919**, sterling stamp box and inkwell holder combination (194x96mm), bun feet base with pierced pattern railings on three sides, central stamp box with sloping springback hinged lid with engraved monogram, two sloped compartments, inkwell holders on either side, with glass inkwells with hinged silver lids, pen rest brackets in front, very fine and scarce.
Estimate \$400 - 600

68 **Brass Desk Set, French champlevé stamp box and inkwell combination (215x148mm)**, ornate base with scroll fringe and multicolored enamel designs, stamp box at center with figure in recline in hinged lid, two concave compartments, inkwell at either side with hinged lids, inset pen well in front.
Estimate \$250 - 350



69 **Porcelain Desk Set, "SP Dresden"**, white porcelain stamp box, inkwells and seal holder combination (180x180mm), octagonal form painted with floral and bird scenes, stamp box with pull off top and two ramped compartments, two seals and two inkwells with taper holder in the center, pen rest brackets, one of the seals jammed otherwise fine and rare.
Estimate \$400 - 600

Scales



70 **Silver Scale & Case, James Allen (Birmingham) 1888**, sterling Allen's combined stamp case and letter scale (23x28mm), shaped outline with scale showing ounce and pence rates, clasp envelope style back opening with single compartment, registered design no. 102604, extremely rare.
Estimate \$750 - 1,000



71 **Silver Scale & Case, James Allen (Birmingham) 1888**, sterling Allen's combined stamp case and letter scale (25x30mm), shaped outline with scale showing ounce and pence rates, clasp back opening with single compartment, registered design no. 112080, very rare in silver.
Estimate \$750 - 1,000

72 **Silver Scale**, silver plate quadrant letter scale and stamp box combination (105x84mm), scale in ounces, stamp box in front with hinged lid and three ramped compartments, some plate wear.
Estimate \$300 - 400

73 **Silver Scale, Levi & Salaman (Birmingham) 1915**, sterling spring postal scale (52x80mm), patterned base and celluloid "Postal Scale" face showing weights in ounces, attractive.
Estimate \$200 - 300



Ex 79



Ex 80



Ex 81



82



Ex 83



74 **Brass Postal Scale, Howell, James & Co. (London) Ca. 1890's**, English polished brass balance scale for letters, full flared brass base with single inset for weights and a set 5 counter weights, plates inset with fine multicolored enamel paintings of cherubs, very fine condition, scarce.
Estimate \$500 - 750

75 **Brass Scale & Case, James Allen (Birmingham) 1888**, Allen's combined stamp case and letter scale (23x28mm), shaped outline with scale showing ounce and pence rates, clasp envelope style back opening with single compartment, registered design no. 102604.
Estimate \$200 - 300

76 **Letter Scale Balance**, of 15 items; includes a selection of modest novelty and simple spring metal scales, 7 brass scales including three quadrant scales (two stamp box combination), candlestick spring scale and a full brass balance scale with weights.
Estimate \$300 - 400

77 **Vintage Ladies Compact**, sterling ladies compact box (80x35mm), fine enamel hand painted lady and peacock scene on front and light blue guilloche enamel sides, dual front opening lids and gold wash interior revealing two mirrors on inside of lids, lipstick and holder, powder dispenser and powder applicator.
Estimate \$150 - 200

Stamp Books & Wallets

78 **Stamp Book & Wallet Balance**, of 7 items, most with advertising; includes couple paper ad wallets, leather Arm & Hammer wallet, celluloid book with flip out tray and small accordion wallet.
Estimate \$75 - 100

79 **Celluloid Advertising Stamp Book**, group of 6 holders, each with facsimile stamp and postmark and advertising address each different, five with interleaving and central calendar.
Estimate \$150 - 200

80 **Celluloid Advertising Stamp Wallet**, group of 8 holders, all but one with facsimile stamp and postmark and advertising address, most with ads on reverse, each with pull out interleaving holder for stamps.
Estimate \$150 - 200

81 **Celluloid Advertising Stamp Books & Wallets**, balance of 12 items, all different and most with multicolored ad designs.
Estimate \$150 - 200

82 **Celluloid Advertising Calendar and Stamp Book**, matching set of three L.S. Plaut & Co., Newark, N.J. holders, each with a different multicolored floral design, logo on reverse.
Estimate \$100 - 150

83 **Petite Calendar & Stamp Book**, 12 leather bound books of various years from 1905 to 1938, most with center interleaving for stamps.
Estimate \$100 - 150