

The December Sale



Schuyler
Rumsey
Philatelic
Auctions

DECEMBER

12-13

2019

The December Sale

Public Auction No. 91

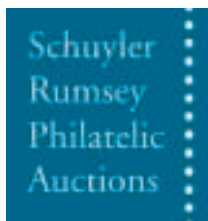
First Session: Thursday, December 12, 2019 at 10:00 AM

Second Session: Friday, December 13, 2019 at 10:00 AM

Live Auction to be held at our San Francisco Galleries



Presale Viewing: December 9-10 in our offices (10:00AM to 5:00 PM).



SCHUYLER J. RUMSEY

Philatelic Auctions, Inc.

47 Kearny St., Suite 500

San Francisco, CA 94108, USA

Telephone: 415-781-5127 Fax: 415-781-5128

E-mail: srumsey@rumseyauctions.com

Catalogs, Internet Bidding and Resources at our Website: www.rumseyauctions.com

Catalog Price \$20

The Rumsey Auction Team



Schuyler J. Rumsey
President



Scott Wieduwilt
Vice President



Matthew W. Kewriga
Vice President

Bidding Increments

\$10-\$300 \$10	\$3,000-\$7,500 \$250	\$75,000-\$150,000 \$5,000
\$300-\$750 \$25	\$7,500-\$15,000 \$500	Over \$150,000 Auctioneer's discretion
\$750-\$1,500 \$50	\$15,000-\$30,000 \$1,000	
\$1,500-\$3,000 \$100	\$30,000-\$75,000 \$2,500	

Recommended Auction Agents

Charles E. Cwiakala
1527 S. Fairview Avenue
Park Ridge, IL 60068-5211
Tel./Fax: (847) 823-8747
Email: CECwiakala@aol.com

Frank Mandel
P.O. Box 157
New York, NY 10014
Tel: (212) 675-0819
Fax: (212) 366-6462
Email: busybird1@me.com

Pursers and Associates
P.O. Box 369
Bronxville, N.Y. 10708
Tel: (857) 928-5140
Fax: (781) 658-2567
Email: info@pursers.com

Giacomo Bottacchi
Via Filli Bronzetti 21
Milano 20129
Italy
Tel: (02) 718-023
Fax: (02) 738-4439
Email: gbstamps@iol.it

Jochen Heddergott
Bauerstrasse 9
D-8000 München 40
Germany
Tel: (089) 272-1683
Fax: (089) 272-1685
Email: mail@philagent.com

Nick Martin
Angel House, Station Road
Lincolnshire PE20 2JH
United Kingdom
Tel: (44) 120 546-0968
Cell: (44) 0770 376-6477

Trevor Chinery
9 St. Laurence Way, Stanwick
Northamptonshire NN9 6QS
England
Tel: (044) 1205 330 026
Fax: (044) 1933 622 808
Email: TrevorTrilogy@aol.com

Symbols

**	Mint (never hinged)	☒	Cover	S	Specimen
*	Mint (hinged)	(☒)	Cover Front	//	Incomplete Set
(*)	Mint (no gum/regummed)	B	Booklet or Booklet Pane	▲	On Piece
o	Used	E	Essay		
☐	Block	P	Proof		

Grading and Condition

Superb	Extraordinary item in the finest condition.
Extremely Fine	Outstanding and exceptional quality.
Very Fine	Choice, first-class condition.
Fine-Very Fine (F-VF)	Stamp or cover in sound condition; if a stamp, it is slightly less well-centered than Very Fine but better centered than Fine.
Fine	Sound in all respects. Perforated stamps will have the designs clear of the perforations; the designs of imperforate stamps will not be cut in to any significant degree.
Very Good (VG)	Imperfect centering (stamps) or poor general appearance.

Any stamp faults such as a thin spot, tear, crease etc., will be described at all times. Postally used covers should be expected to have the normal degree of wear associated with them and this wear is not grounds for return. The grade of a cover is independent of the grade of the stamps on it. Covers from the famous Carroll-Hoy correspondence will normally have a small unobtrusive staple hole. In lots containing several items, degrees of condition denote the overwhelming average and examples above and below such condition can be expected.

Terms of Sale

Bidding

I. All bids (whether by floor bidders, mail bidders, or telephone bidders) will have a premium of 15% added to the auction sale price.

II. All bids are per lot as numbered in the catalog unless otherwise announced by the auctioneer at the time of sale. The right is reserved to withdraw any lot prior to sale, to divide a lot, or to group two or more lots, or to act on behalf of the seller. Schuyler Rumsey Philatelic Auctions, Inc. will execute bidding instructions on behalf of clients, but will not be responsible for any errors in the execution of such bids. Schuyler Rumsey Philatelic Auctions, Inc. is not liable for bidding errors related to live auction internet bidding and/or the loss of internet connection during the live auction.

III. The highest bidder shall prevail; lots are sold at one increment over the second highest bid. Should any dispute arise between bidders, the decision of the auctioneer as to the successful bidder and the reoffering or resale of the lot under dispute shall rest entirely on the judgment of the auctioneer. The auctioneer shall regulate the bidding and reserve the right to refuse any bid believed by him not to be made in good faith.

IV. Consignor has and retains the right to bid personally, or by his duly appointed agent, through the auctioneer, unless the sale is advertised and announced as one restricting such bidding by consignors or their agents.

Payments of Purchases

V. FLOOR BIDDERS. Floor bidders shall furnish the auctioneer their names and addresses prior to bidding on any lot. The name and address of the buyer of each lot shall be registered with the auction house following the sale of each lot. Payment of the whole purchase price shall be made by the floor buyer in such manner as the auctioneer may determine. Special credit arrangements must be made prior to the sale.

VI. MAIL BIDDERS. A successful mail bidder will be notified of lots purchased and must remit payment before the lots are sent. Auction bills are due and payable upon receipt of notification. If buyer's payment is not received within ten (10) days, Schuyler Rumsey Philatelic Auctions, Inc. may resell all lots without notice. Any and all losses incurred as a result of resale will be passed on to the defaulting buyer. Cost of postage, registration, etc. will be charged to buyer. Proof by the auctioneer of receipt of sending at the advised address shall constitute delivery.

VII. DIRECT DRAFTS/TRANSFERS. A successful mail bidder known to us may contact our office at (415) 781-5127 for the information necessary to pay directly into the vendor bank account. Any additional charges resulting from processing payments by this method shall be borne by the buyer. Method of payment should be noted on the bid sheet.

VIII. Title shall not pass to the buyer until full payment is received by Schuyler J. Rumsey Philatelic Auctions, Inc.

Authenticity

IX. All of our lots are sold as genuine. Lots accompanied by recent (within 5 years of sale date) expert certificates are sold "as is" based on the description in the certificate. The aforementioned expertized lots may not be returned under any circumstances including those instances in which subsequent certificates yield conflicting opinions. The accepted authorities for U.S. stamps are the Philatelic Foundation (P.F.), the Philatelic Stamp Authentication and Grading, Inc. (P.S.A.G.) and the Professional Stamp Expertizing Committee (P.S.E.), however we do not accept "graded certificates", nor do we accept "encased" certified items.

X. All extensions must be paid in full, in advance. Lots with more than one item may not be placed on extension. There will be no exceptions.

XI. All lots on extension must be submitted for expertizing by the auctioneer exclusively. Each lot is sold as genuine, except those described "as is", but when, in the opinion of a competent authority acceptable to Schuyler J. Rumsey Philatelic Auctions, Inc., the lot is declared otherwise, the purchase price will be refunded in full. The lot must be received by Schuyler J. Rumsey Philatelic Auctions, Inc. within a period of 21 days from the date of auction. Expenses incurred for purposes of expertizing shall be borne by the purchaser except where the lot is found by said competent authority to be materially not as described, in which case the consignor will be responsible for expertizing costs incurred. Proof of the inability of said competent authority to express a definite opinion is not grounds for return of an item.

XII. Any lot, description of which is incorrect, is returnable (A) within three (3) days of receipt and (B) if received by Schuyler J. Rumsey Philatelic Auctions, Inc. within twenty-one (21) days from the date of the auction. All disputed lots must be returned intact, in the condition received; no adjustments will be made. The following lots are not returnable: collection lots containing ten (10) or more items; lots from purchasers OR THEIR AGENTS who had the opportunity to examine them before the auction; items described as having defects or of a quality standard "Very Good" (V.G.) or below; lots with disputed centering or margins when the item is photographed; lots described "as is".

Sales Tax

XIII. The State Sales Tax will be collected as ordered by the laws of such a state (as appropriate) - is payable by buyers liable to tax. See below.

This sale will be held in California and the buyer will be liable for any applicable sales tax for this auction. Any lots purchased by buyers in California are subject to State Sales Tax unless:

1.) You have a verifiable California resale license number, which must be on file with us prior to the Auction.

OR

2.) You are not a California resident or a resident of a state for which sales taxes are required to be collected by Schuyler Rumsey Philatelic Auctions, Inc. and your lots are being shipped to your out-of-state or out-of-country mailing address.

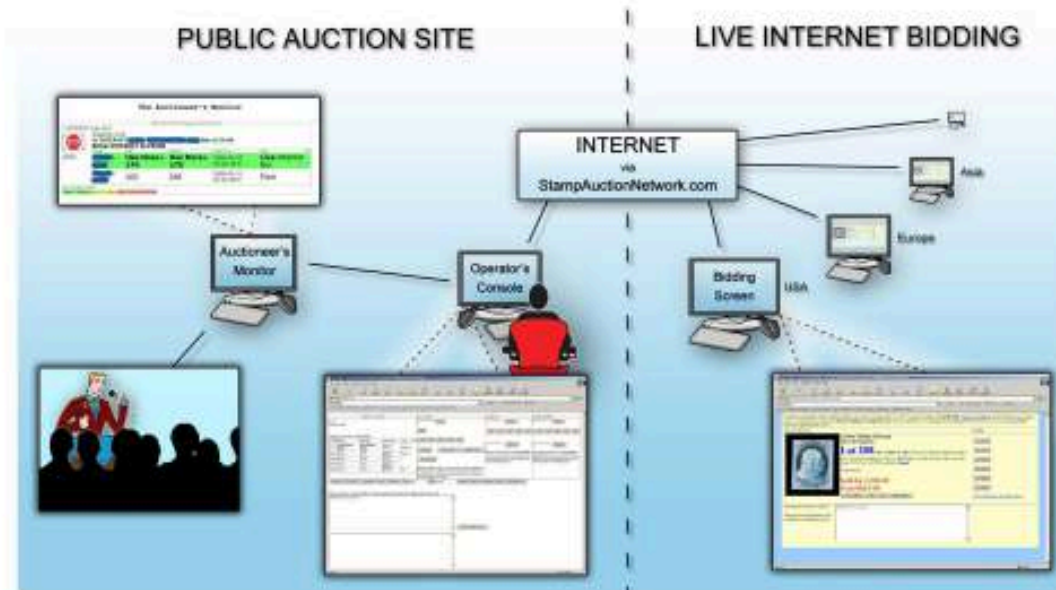
XIV. JURISDICTION. In the event of any dispute between the auctioneer and bidders, or between any parties requesting inspection of any of the lots and the auctioneer, or between persons offering their lots to be auctioned and the auctioneer, the jurisdiction over the dispute shall be in the City and County of San Francisco, State of California.

XV. In the event of any dispute, the prevailing party shall be entitled to court costs and reasonable attorney's fees.

XVI. THE PLACING OF A BID SHALL CONSTITUTE ACCEPTANCE OF THE FOREGOING TERMS OF SALE.

Live Auction Bidding Hosted by Stamp Auction Network

Bid Live via the internet as though you were on the auction room floor!



I have already registered with SAN and have been approved by Rumsey for internet bidding.

I have not bid through SAN before.

Go to www.stampauctionnetwork.com, hover over the Membership tab at top and select "Register" from the options. Fill out the online form and select Schuyler J. Rumsey Auctions from the list of auction companies. If you are a prior Rumsey client, simply put us as reference #1. If not, please provide proper trade references (no family members or credit card companies). Once registered at SAN and approved by Rumsey for bidding, you will be ready for live internet bidding

I have bid through SAN before, but this is the first time I have bid in a Rumsey sale.

You will just need to be approved by Rumsey for bidding. Go to www.stampauctionnetwork.com, login in to your account and then hover over the My San tab at top and select "Update Registration" from the options. Select Schuyler J. Rumsey Auctions from the list of auction companies and submit your information to us for approval. Once approved you will be ready for bidding.

Before bidding by internet for the first time, we recommend finding a sale in progress on SAN and listening to the public broadcast or login as a registered bidder. This will allow you some familiarity with the bidding interface.

Auction Day - Log on at www.stampauctionnetwork.com

After you logon, Select our sale from the list at the top right of the screen.

The auction interface will show an image of the lot (if enabled) and a brief description, the current bidding status, etc.

Retracting a bid is usually not acceptable, so please bid accordingly.

If you are done bidding, please click the "PASS" button. This will allow us to ensure we know you are done bidding and it will speed up the auction.

For any questions or concerns during the auction, please contact our office:

srumsey@rumseyauctions.com

(415) 781-5127

Table of Contents

Thursday, December 12, 2019, at 10:00 A.M.

1001-1179	Stamp Boxes
1180-1358	The Classic Stamps and Postal History of Ecuador - Part 2
1359-1462	General Foreign

Friday, December 13, 2019, at 10:00 A.M.

1463-1496	United States Postal History - Western and Eastern Express, Towns, Military Mail, Railroads
1497-1596	United States Postal History - Foreign Mail including Transatlantics
1597-1636	United States Postal History - Packets/Inland Waterways, Advertising/Illustrated, Fancy Cancels
1637-1711	United States Postal History - Postmasters' Provisionals to Airmails
1712-1742	United States Postal History - U.S. Offices in China, A.E.F. Siberia and other Back of the Book
1743-1814	United States Regular Issues - 19th Century
1815-1868	United States Regular Issues - 20th Century
1869-1883	United States - Airmail Issues
1884-1922	United States - Back of the Book including Special Delivery, Officials, Postal Stationery and Revenues
1923-1992	United States Possessions - Hawaii: Postal History, Regular Issues and Back of the Book
1993-1999	United States Possessions - Philippines, Samoa



Stamp Boxes

Silver Stamp Boxes



1001 **Silver Box, Crisford & Norris (Birmingham) 1908**, sterling silver stamp box and ivory letter opener combination (35x225mm), **novelty golf club form**, club head with a hinged lid at top opening to a single concave compartment, an extremely rare design and one of the most sought after boxes missing from most of the great collections that have come on to the market.
Estimate. \$3,000 - 4,000



1002 **Silver Box**, sterling stamp box (47x32mm), inset enamel finely executed reproductions of Chile 1905 2c & 5c Columbus stamp issues, hinged front opening top, two ramped compartments and gold wash interior; ca. 1905, marked "900" sterling and lyre (purity), extremely rare.
Estimate. \$2,000 - 3,000

Stamp Boxes



- 1003 **Silver Box**, sterling stamp box (66x27mm), inset fine enamel reproductions of Malta 1885 ½d green, 2d blue & 1d carmine stamps, clasp front hinged opening top with three gold wash sloped compartments, sterling marked “900”, very rare.
 Estimate. \$2,000 - 3,000



- 1004 **Silver Box, Birmingham Assay 1897**, sterling stamp box (47x32mm), inset fine enamel reproduction of Great Britain 1881 1d lilac & 1897 ½d vermilion stamps at top, hinged front opening lid with two polished concave compartments; couple minor dings in no way affecting appearance, very rare.
 Estimate. \$1,500 - 2,000



- 1005 **Silver Box**, sterling traveling stamp and double inkwell combination box (117x40mm), with lift up pen rest, plain form, three hinged front opening lids with colored glass window insets, each with square push button clasp on front, red and blue glass side lids open to matching color ink bottles, central yellow glass lid to gold wash ramp stamp compartment, marked “London 1895”, very rare and unusual.
 Estimate. \$1,500 - 2,000



1006 **Silver Box, George W. White & Co. (London) 1902**, sterling stamp box (88x37mm), sloped front and balled feet at base, three individual hinged windowed lids each bearing a different Great Britain stamps, each opening to a ramped compartment and gold wash interior, rare.
 Estimate. \$1,000 - 1,500



1007 **Silver Box, Samuel Jacob (London) 1894**, sterling stamp box and inkwell combination (35x57mm), **novelty railway lantern form**, square form with green glass "light" at front, hinged lid opening to glass inkwell, additional hinged lid stamp compartment in lid, rare.
 Estimate. \$1,000 - 1,500



1008 **Silver & Wood Box, Mappin & Webb (London) 1912**, sterling and wood novelty stamp box (93x57mm), **Post Office cart form**, wood body painted red with "Parcel Post" on sides and "G.P.O." at rear, silver wheel and undercarriage, hinged side opening lid with interior partially leather lined, extremely rare and unusual, *ex-Davis Collection*.
 Estimate. \$1,000 - 1,500



1009 **Silver Box, Corneluis Saunders & Francis Shepard (Birmingham) 1913**, sterling stamp box (67x38mm), **novelty garden trug form**, two hinged window inset lids displaying stamps, opening to two gold wash compartments, very rare.
 Estimate. \$750 - 1,000



1010 **Silver Box, Goldsmiths & Silversmiths Co. Ltd. (London) 1897**, sterling stamp box and inkwell combination (116x75mm), plain flared base, hinged balled lid at center opening to inkwell, hinged lids at either side opening to wooden ramped and concave compartments with gold wash interior, grooved pen rest at front, very scarce.
 Estimate. \$750 - 1,000



1011 **Silver Box, H. Matthews (Birmingham) 1912**, sterling stamp box and perpetual calendar combination (165x56mm), on flared base, stamp box at left with blue inset enamel "Stamps" in script ion lid, hinged front opening with three curved compartments, gold wash interior, calendar at right with scrolling wheel at right to change day, bracket at base with six double sided month cards, very rare.
 Estimate. \$750 - 1,000



- 1012 **Silver Box**, sterling stamp box, inkwell, nibbed perf wipe, pen and letter rest combination (139x49mm), top letter rest frame incorporating pen rest in front, front pull out drawer with single gold wash ramped stamp compartment, nibbed perf wipe brush and inkwell with spring hinged lid opens when drawer knob is turned, marked "London 1902", rare.
 Estimate. \$600 - 800



- 1013 **Silver Box**, sterling stamp box and moistener combination (102x102mm), circular box form with intricate engine turned pattern with raised floral scrolling, top hinged lid, six sloped gold wash compartments surrounding a central circular compartment for moistening sponge, French (marked L.D), very rare.
 Estimate. \$500 - 750



- 1014 **Silver Box, S. Blanckensee & Son Ltd. (Birmingham) 1905**, sterling stamp box and rocker blotter combination (137x65mm), knob handle with hinged lid single curved gold wash stamp compartment at one side and window inset on other displaying stamp, engraved "Dec 7th, 1911" on knob, a lovely item.
 Estimate. \$500 - 750

Stamp Boxes



1022



1023



1024



1026



1027



1015 **Silver Box, Deakin & Francis (Birmingham) 1898**, sterling stamp box (82x40mm), inset windowed lid displaying three Great Britain stamps, flared base, spring hinged front opening top, three gold wash ramped compartments, scarce.
Estimate. \$400 - 600



1016 **Silver Box, George W. Shiebler & Co. (New York, N.Y.)**, sterling stamp box (115x54mm), all over pierced floral design with flared feet, hinged front opening lid, four sloped compartments, marked sterling, very scarce.
Estimate. \$400 - 600



1017 **Silver Box, George Betjeman & Sons (London) 1923**, sterling stamp box and inkwell combination (75x106mm), plain desktop style, front hinged pull down curved lid with three pocket style compartments on reverse of lid, additional wood inlay curved compartment inside, curved pen rest behind lid, top with balled hinged lid opening to inkwell, choice.
Estimate. \$400 - 600

Stamp Boxes



1028



1031



1033



1018 **Silver Box**, sterling ladies compact box (80x 35mm), **fine enamel hand painted lady and peacock scene** on front and light blue guilloché enamel sides, dual front opening lids and gold wash interior revealing two mirrors on inside of lids, lipstick and holder, powder dispenser and powder applicator.
Estimate. \$300 - 400



1020 **Silver Box, George W. Shiebler & Co. (New York, N.Y.)**, sterling stamp box (95x54mm), floral pierced lid and sides on wide flat base with balled feet, hinged front opening lid and three sloped compartments, gold wash interior, marked sterling.
Estimate. \$300 - 400



1019 **Silver Box, Walker & Hall (Sheffield) 1904**, sterling stamp box (26x36mm), **coal scuttle form**, sloping front windowed lid displaying stamp, hinged front opening and single compartment, an unusual design.
Estimate. \$300 - 400



1021 **Silver Box, Deakin & Francis (Birmingham) 1902**, sterling stamp box (62x40mm), front with spring closing lid with beveled window top, two ramped gold wash compartments, most attractive.
Estimate. \$300 - 400

1022 **Silver Box, George W. Shiebler & Co. (New York, N.Y.)**, sterling stamp box (83x41mm), raised ornate floral and scroll patterns, wide brim lid and flared feet, hinged front opening lid, three sloped gold wash compartments, marked sterling.
Estimate. \$300 - 400



1029



1030



1034



1035



1036



1037



1038



1039



1040

1023 **Silver & Glass Box, Foster & Bailey (Providence, R.I.),** sterling and cut glass box (96x51mm), base with etched floral banners and cut rays at bottom, blue guilloche and floral enamel lid with silver rim, hinged front opening and two ramped compartments, velvet lined inner lid.
Estimate. \$300 - 400

1024 **Silver Box, Reed & Barton (Taunton, Mass.),** sterling stamp box (100x58mm), polished dome style with flared base, hinged front opening top and three sloped compartments, gold wash interior, marked sterling.
Estimate. \$250 - 350



1025 **Silver Box**, sterling stamp box (58x34mm), **novelty box in double tier chest of drawers form**, double hinged front opening revealing two separate two ramped gold wash compartments, probably European made for U.S. market, marked sterling, some scratches on lid, unusual design.
Estimate. \$250 - 350

1026 **Silver Box, Gorham Mfg. Co. (Providence, R.I.)**, sterling stamp box (105x63mm), raised floral and scroll bordering and accents, domed lid, hinged front opening top, three concave compartments, marked sterling.
Estimate. \$250 - 350

1027 **Silver Box, Gorham Mfg. Co. (Providence, R.I.) 1917**, sterling stamp box and rocker blotter combination (125x65mm), knob handle with monogram, hinged lid to one side opening to single sloped compartment.
Estimate. \$250 - 350

1028 **Silver Box, Jacobi & Jenkins (Baltimore, Md.)**, sterling stamp box (40x46mm), convex top with raised floral design, floral pattern sides, hinged front opening top with finely polished gold wash single tray, marked "925" fine sterling.
Estimate. \$200 - 300

1029 **Silver Box, Unger Brothers (Newark, N.J.)**, sterling stamp box (68x52mm), raised women and cherub kissing motif on lid and flared art nouveau style sides, hinged front opening top and two sloped compartments, marked sterling "925" fine.
Estimate. \$200 - 300

1030 **Silver Box, Levi & Salaman (Birmingham) 1906**, sterling stamp box (60x35mm), trough form, inset tortoiseshell lid with silver inlay "Stamps" in script, hinged front opening top, two gold wash compartment, a lovely box.
Estimate. \$200 - 300

1031 **Silver Box, Cartier Inc. (New York, N.Y.)**, sterling stamp coil dispenser (50x50mm), inset red and black enamel U.S. 1922, 3¢ Washington stamp with wavy line cancel on lid, hinged opening with gold wash interior and central spindle, marked sterling, an attractive box by the famed Cartier Jewelers.
Estimate. \$200 - 300

1032 **Silver Box, Pairpoint Mfg. Co. (New Bedford, Mass.)**, silver plated stamp box (90x36mm), **Palmer Cox brownie on sled form**, hinged front opening lid and polished single sloping compartment, a gorgeous box.
Estimate. \$200 - 300

1033 **Silver Box**, sterling stamp box (53x31mm), raised reclining women and cherub central design with scroll and floral embellishments, side opening top and double ramped gold wash compartments, marked sterling.
Estimate. \$150 - 200

1034 **Silver Box**, sterling stamp box (30x38mm), raised cupids and bouquet top lid design with scroll and floral embellishments at sides, single ramped compartment and gold wash interior.
Estimate. \$150 - 200

1035 **Silver Box**, silver plate box (55x55mm), attached to spiral tray, fancy engraved "Stamps" on lid, slide back lid with ball pull, single sloped compartment; unusual.
Estimate. \$150 - 200

1036 **Silver Box**, sterling stamp box (95x34mm), raised floral design top, front hinged opening, four sloped compartments and gold wash interior, marked sterling.
Estimate. \$150 - 200

1037 **Silver Box, Theo. A. Korn & Son (New York, N.Y.)**, sterling stamp box (107x71mm), elaborate raised scroll and floral design, central hinged front opening top, two sloped compartments and gold wash interior.
Estimate. \$150 - 200

1038 **Silver Box, William B. Kerr & Co. (Newark, N.J.)**, sterling stamp box (109x57mm), dome lid with raised art nouveau floral design, engraved monogram at center, sides flared to base, hinged front opening top, two concave compartments, marked sterling.
Estimate. \$150 - 200

1039 **Silver Box**, sterling stamp box (69x44mm), raised floral lid design with engraved monogram at center, hinged front opening lid and two sloped compartments, gold wash interior, marked sterling.
Estimate. \$150 - 200

1040 **Silver Box, Meriden Britannia Co. (Meridan, Ct.)**, sterling stamp box (37x49mm), raised scroll design on lid and sides, hinged front opening top and gold wash single sloped compartment.
Estimate. \$150 - 200

Stamp Boxes



1041



1043



1044



1045



1046



1047



1048

1041 **Silver Box, Appay Paris**, sterling stamp box (125x41mm), inset "G. S" monogram with curved floral border on lid, hinged front opening top, three sloped stamp compartments and additional large concave compartment, gold wash interior.
Estimate. \$150 - 200



1042 **Silver Box, George A. Henckel & Co. (New York, N.Y.)**, sterling & lead crystal cut glass box (75x54mm), hammered pattern lid and glass base with cut rays pattern at bottom, hinged front opening top, two sloped compartments.
Estimate. \$150 - 200

1043 **Silver Box**, sterling stamp box (84x40mm), chest form with balled feet, hammered silver exterior, hinged lid and three ramped wood compartments, unusual.
Estimate. \$150 - 200

1044 **Silver Box, Gorham (Providence, R.I.) 1897**, sterling stamp box (73x39mm), lid and sides with raised scroll and floral designs, central MR monogram on lid, hinged front opening top, three sloped mahogany wood compartments, marked sterling.
Estimate. \$100 - 150

1045 **Silver Box, Wilcox Silver Plate Co. (Meriden, Ct.)**, sterling stamp box (54x37mm), lid with raised scroll and floral border, hinged front opening top, two ramped compartments, gold wash interior, marked sterling.
Estimate. \$100 - 150

1046 **Silver Box, Wilcox Silver Plate Co. (Meriden, Ct.)**, silver plated stamp box (89x41mm), lid with inset pen nib and raised U.S. Washington stamp design, pierced scroll and floral sides, hinged front opening top, two compartments apparently for pen nib and stamps.
Estimate. \$100 - 150

1047 **Silver Box, Spaulding & Co. (Chicago, Ill.)**, sterling stamp box (115x54mm), plain form with flared base, M.M.S monogram on lid, hinged front opening top, three concave gold wash compartments, marked sterling.
Estimate. \$100 - 150

Stamp Boxes



1053



1054



1055



1056



1057



1058



1059



1060



1062



1063



1064



1065



1066



1067



1068



1069

Silver Stamp Cases

1048 **Silver Case**, gold plated sterling stamp case (35x25mm), with U.S. 1886 1¢ Jefferson postal card design and New York town postmark, swivel out single compartment.
Estimate. \$150 - 200



1049 **Silver Case**, George Unite (Birmingham) 1912, sterling stamp case (25x34mm), front finely enameled with **Great Britain 1840 1d black** stamp design, top pendent ring with hidden push button spring opening in compartment, with a turn engine spring loaded coin compartment and bracketed interior for stamps, a very rare combination stamp and coin case.
Estimate. \$1,500 - 2,000



1050 **Silver Case**, Harrison Brothers & Howson (Sheffield), 1890, sterling stamp case (25x30mm), front end opening with spring pressure single slide stamp compartment, red enamel U.S. 2¢ Small Banknote facsimile on lid, pendent ring at top.
Estimate. \$1,000 - 1,500



1051 **Silver Case**, sterling French stamp case (24x29mm), book form with raised poppies on front and reverse and scrolled "Timbres Poste" on front in Art Nouveau style, swivel out single tray and pendent ring; rare.
Estimate. \$500 - 750



1052 **Silver Case**, silver plated case and seal combination (22x27mm), case with red lilac & white **G.B. 3d QV stamp replica** on lid, hinged side opening top and gold wash compartment.
Estimate. \$300 - 400

1053 **Silver Case**, silver plated case (29x39mm), with raised **Landing of Columbus** design, single compartment with hinged top opening.
Estimate. \$200 - 300

Stamp Boxes



1070



1071



1072



1073



1074



1075



1076



1077



1078



1079



1080



1081

Stamp Boxes



1082



1083



1084



1085



1086



1087

- 1054 **Silver Case**, sterling stamp case (25x32mm), with inset black enamel machine canceled U.S. 1922 2¢ Washington stamp design, side spring opening with single clip compartment in gold wash.
Estimate. \$200 - 300
- 1055 **Silver Case**, sterling stamp case (49x30mm), envelope design with red enamel U.S. 2¢ Washington stamp canceled by New York postmark, back side opening back flap with double gold wash compartment and transit postmark on reverse, marked "Sterling, Pat June 24 90".
Estimate. \$200 - 300
- 1056 **Silver Case**, sterling Dutch stamp case (25x30mm), back-to-back dual compartments with button top lids, one with raised sailboat view, other with raised windmill view, single sword hallmark (ca. 1906).
Estimate. \$200 - 300
- 1057 **Silver Case**, sterling stamp case (28x36mm), raised U.S. 1883 2¢ Banknote stamp on front, monogram on reverse, front top opening and single gold wash compartment, top pendent ring, marked sterling with stag head hallmark.
Estimate. \$200 - 300
- 1058 **Silver Case**, sterling stamp case (24x31mm), raised U.S. 1883 2¢ Banknote stamp on front and engraved floral design on reverse, front top opening and single silver wash compartment, top pendent ring, marked sterling.
Estimate. \$200 - 300
- 1059 **Silver Case**, sterling stamp case (23x26mm), raised U.S. 1890 2¢ Small Banknote stamp on front, front top opening and single ramped compartment, marked sterling.
Estimate. \$200 - 300

- 1060 **Silver Stamp Booklet Case**, sterling stamp booklet case (46x80mm), raised "President McKinley, March 4th 1901" portrait, Washington Monument and "The White House", other side with "The Capitol" view and large "Postage Stamps" title.
Estimate. \$200 - 300



- 1061 **Silver Case**, sterling stamp and watch case (34x58mm), book style with engine turned rays design and inset watch face on front, bottom clasp with back opening to brass windowed watch works and single stamp compartment with lid, watch wind-up pendent ring at top (watch working), Swiss.
Estimate. \$200 - 300

Stamp Boxes

1062	<p>Silver Case, Sampson Mordon (London) 1887, sterling match case (22x45mm), inset enamel "Bill" name with faux page fold over on face, side flip top opening and striker at bottom. Estimate. \$200 - 300</p>	1073	<p>Silver Case, silver plate stamp case (25x35mm), raised U.S. 1883 2¢ Banknote stamp on front and reverse, swivel single pocket compartment, corner pendent ring. Estimate. \$150 - 200</p>
1063	<p>Silver Case, sterling stamp case (35x25mm), with U.S. 1886 1¢ Jefferson postal card design and New York town postmark, swivel out single compartment and pendent ring. Estimate. \$150 - 200</p>	1074	<p>Silver Case, sterling stamp case (30x30mm), raised golfer scene on front, front top opening and single ramped compartment and gold wash inside top, top pendent ring, marked sterling. Estimate. \$150 - 200</p>
1064	<p>Silver Case, sterling stamp case (33x25mm), envelope design with red enamel U.S. 2¢ Washington stamp canceled by New York postmark, top side opening backflap with single compartment and transit postmark on reverse, marked "Sterling, Pat June 24 90". Estimate. \$150 - 200</p>	1075	<p>Silver Case, G.B.&H. Hallmark, sterling stamp case (26x32mm), raised witch & broomstick on front, side link opening and single compartment, marked sterling. Estimate. \$150 - 200</p>
1065	<p>Silver Case, American sterling stamp case (53x39mm), flat two tray gold wash compartments, front slide tray with ruby button pull, top with inset floral design. Estimate. \$150 - 200</p>	1076	<p>Silver Case, sterling stamp case (28x30mm), raised floral design with multicolored enamel women's portrait on front, top opening and single compartment, marked sterling. Estimate. \$150 - 200</p>
1066	<p>Silver Case, sterling stamp case (25x30mm), raised floral border on both sides with multicolored enamel dog design and reverse with engraved monogram, top side opening with single compartment, marked sterling. Estimate. \$150 - 200</p>	1077	<p>Silver Case, sterling stamp case (59x51mm), raised scroll & floral design front and back, inside with bound 16 pages of interleaving, marked sterling; unusual. Estimate. \$150 - 200</p>
1067	<p>Silver Case, Century of Progress Exhibition, silver plated stamp case (25x30mm), book form design with inset "Stamps - By Uncle Sam" and central raised "Century of Progress - 1934 Chicago" exposition logo, swivel out single tray and corner pendent ring. Estimate. \$150 - 200</p>	1078	<p>Silver Case, Ahronsberg Brothers (Birmingham) 1911, sterling stamp case (53x48mm), shield and engine turned top design, green button pullout slide tray with two gold wash compartments, one marked "Patent" for Ahronsberg's 1903 patent. Estimate. \$150 - 200</p>
1068	<p>Silver Case, sterling stamp case (33x25mm), envelope design with red enamel U.S. 2¢ Washington stamp canceled by New York postmark, top side opening backflap with single compartment and transit postmark on reverse, marked "Sterling, Pat June 24 90". Estimate. \$150 - 200</p>	1079	<p>Silver Case, "Marathon Sterling", sterling stamp case (27x53mm), top with vertical gold inlays and engine turn design, front clasp opening and back to back clasp trays. Estimate. \$150 - 200</p>
1069	<p>Silver Case, sterling stamp case (33x25mm), envelope design with red enamel U.S. 2¢ Washington stamp canceled by New York postmark, top side opening backflap with single compartment and transit postmark on reverse, marked "Sterling, Pat June 24 90". Estimate. \$150 - 200</p>	1080	<p>Silver Case, Schickerling & Co. (Newark, N.J.), sterling stamp case (29x36mm), central raised Masonic Square & Compass design and scrolled background, side opening with bracketed compartments on each side, top pendent ring, marked sterling. Estimate. \$150 - 200</p>
1070	<p>Silver Case, Crisford & Norris (Birmingham) 1903, sterling stamp case (24x28mm), book design with raised "Stamps", swivel out single tray and corner pendent ring. Estimate. \$150 - 200</p>	1081	<p>Silver Case, European silver stamp case (25x32mm), enamel France 25c Peace & Commerce stamp issue design on top lid, front opening with single ramped gold wash compartment, marked "800". Estimate. \$150 - 200</p>
1071	<p>Silver Case, sterling stamp case (41x28mm), envelope design with raised U.S. 2¢ Washington stamp, three chain pendent ring, one attached to side slide out single clip tray; unusual. Estimate. \$150 - 200</p>	1082	<p>Silver Case, Foster & Bailey (Providence, R.I.), sterling stamp case (25x29mm), raised bicycle design on front, chain link top opening and single compartment, marked sterling. Estimate. \$150 - 200</p>
1072	<p>Silver Case, silver plate stamp case (25x37mm), raised U.S. 1883 2¢ Banknote stamp on front and reverse, side slide spring top and single gold wash compartment, top pendent ring. Estimate. \$150 - 200</p>	1083	<p>Silver Case, Unger Brothers (Newark, N.J.), sterling stamp case (36x45mm), raised floral border with heart and cupids on one side and monogram on other, top side opening single compartment and side pendent ring, marked sterling. Estimate. \$100 - 150</p>

Stamp Boxes



1090



1091



1092



1093



1096



1098

- 1084 **Silver Case**, sterling stamp case (26x36mm), **raised Pointer Dog** with scroll bordering on both sides, top side opening with single compartment and side pendent ring, marked sterling.
 Estimate. \$100 - 150
- 1085 **Silver Case**, sterling stamp case (30x33mm), raised **golfer motif on both sides**, top side opening with single compartment and side pendent ring, marked "325 Sterling".
 Estimate. \$100 - 150
- 1086 **Silver Case**, sterling stamp case (32x27mm), book design with inset U.S. 2¢ Washington stamp canceled by New York postmark, flip side opening with single compartment, marked sterling.
 Estimate. \$100 - 150
- 1087 **Silver Case**, silver plated stamp case (33x21mm), book design with raised Uncle Sam "Will Not Permit" stamp and inset Chicago postmark, hinged clasp and single tray compartment, corner pendent ring; unusual.
 Estimate. \$100 - 150



- 1088 **Silver Case**, **George W. Shiebler & Co. (New York, N.Y.)**, sterling stamp case (26x32mm), "U.S. Mail" mailbox design, front top opening with single compartment, top pendent ring, marked sterling.
 Estimate. \$100 - 150



- 1089 **Silver Case, Crisford & Norris (Birmingham) 1910**, sterling stamp case (28x23mm), envelope design with inset blue enamel “Stamps” and floral designs, front clasp top and single compartment, top pendent ring.
Estimate. \$100 - 150
- 1090 **Silver Case**, silver plated stamp case (60x32mm), envelope design with raised Uncle Sam “Will Not Permit” stamp and inset Chicago postmark, front opening top with large single compartment.
Estimate. \$100 - 150
- 1091 **Silver Case, 1893 Columbian Exposition**, silver plated stamp case (60x32mm), inset “World’s Fair 1492-1893” design showing The *Nina*, *Pinta* and *Santa Maria*, front ball clasp opening and single compartment.
Estimate. \$100 - 150
- 1092 **Silver Case, 1893 Columbian Exposition**, silver plated stamp case (40x31mm), with raised “Landing of Columbus” design, front top opening and single tray compartment.
Estimate. \$100 - 150
- 1093 **Silver Case, 1893 Columbian Exposition**, silver plated stamp case (40x30mm), “1492-1893 Worlds Fair Souvenir” with raised *Nina*, *Pinta* & *Santa Maria* design, front top opening with single compartment.
Estimate. \$100 - 150



- 1094 **Silver Case**, sterling stamp case (32x40mm), **padlock design** with clipped pull out tray at top, C&D hallmark, marked sterling; unusual.
Estimate. \$100 - 150

Paper Stamp Cases



- 1095 **Paper “The Wonderland Postage-Stamp Case”**, lined reinforced case (80x105mm) with lithographed Alice and Child on one side and Cheshire Cat on other, pull out stamp folio with spaced for various stamp denominations ½d to 1sh, reverse with “Invented by Lewis Carroll” imprint, includes original wrapper (some wear) and 39pg pamphlet *Eight or Nine Wise Words About Letter-Writing*; choice condition.
Estimate. \$200 - 300
- 1096 **Paper “The Wonderland Postage-Stamp Case”**, lined reinforced case (80x105mm) with lithographed Alice and Child on one side and Cheshire Cat on other, pull out stamp folio with spaced for various stamp denominations ½d to 1sh, reverse with “Invented by Lewis Carroll” imprint, includes original wrapper (some wear) and 39pg pamphlet *Eight or Nine Wise Words About Letter-Writing*; choice condition.
Estimate. \$150 - 200

Bronze Stamp Boxes



- 1097 **Bronze Box, Komai of Kyoto**, bronze stamp box (45x45mm), elaborate inset black enamel inlay bird design with floral inlay sides, hinged front opening top and brass single ramped compartment with floral motif at bottom.
Estimate. \$400 - 600



1099



1100



1101



1102



1103



1104

Stamp Boxes

- 1098 **Bronze Box, Tiffany Studios (New York),** bronze stamp box (125x75mm), sloping sides form and allover marble gilt, art nouveau style American Indian patterning with central raise owl head on hinged lid, three concave compartments.
Estimate. \$300 - 400
- 1099 **Bronze Box, Tiffany Studios (New York, N.Y.),** bronze stamp box (94x48mm), plain rectangular form with raised Zodiac motifs on lid and patterned sides, hinged lid opening to three concave compartments.
Estimate. \$200 - 300
- 1100 **Bronze & Sterling Silver Box,** bronze stamp box (103x61mm), plain rectangular form, Arts & Crafts style with sterling silver floral overlays at top and sides, hinge top and single ramped compartment.
Estimate. \$100 - 150
- 1101 **Bronze and Sterling Silver Box, Heintz Art Metal Shop (Buffalo),** stamp box (90x54mm), Arts & Craft style with silver floral overlays at top and sides, hinged lid and single ramped compartment.
Estimate. \$200 - 300
- 1102 **Bronze and Sterling Silver Box, Heintz Art Metal Shop (Buffalo),** bronze and sterling silver stamp box (84x47mm), Arts & Craft style with flat roof lid, silver floral overlays at top and sides, hinged lid and single ramped compartment.
Estimate. \$200 - 300

- 1103 **Bronze and Sterling Silver Box, Heintz Art Metal Shop (Buffalo),** stamp box (69x44mm), Arts & Craft style, rectangular form, silver floral overlays at top and sides, hinged lid and single ramped compartment.
Estimate. \$150 - 200
- 1104 **Bronze and Sterling Silver Box, Heintz Art Metal Shop (Buffalo),** stamp box (69x44mm), Arts & Craft style, rectangular form, silver floral overlay at top, hinged lid and single ramped compartment.
Estimate. \$100 - 150
- 1105 **Bronze Box, Heintz Art Metal Shop (Buffalo) ca. 1900,** bronze stamp box (105x72mm), Arts & Crafts form with curled feet, sterling silver border overlays at top and sides, hinged top and single ramped compartment.
Estimate. \$100 - 150

Brass Stamp Boxes



- 1106 **Brass Box,** brass stamp box (125x34mm), intricate multicolored enamel patterning on lid and side, balled feet, hinged front opening top and five ramped compartments, most likely Russian Empire.
Estimate. \$300 - 400

- 1107 **Brass Box, F. Simm (France)**, brass stamp box (60x34mm), silver plated man and women scene engraved design with floral and scroll bordering, front hinged top opening and two sloped compartments.
Estimate. \$200 - 300
- 1108 **Brass Box**, brass stamp box (76x36mm), plain polished form with cast **Vienna bronze terrier** on lid, hinged front opening top and three compartments.
Estimate. \$150 - 200
- 1109 **Brass Box**, brass stamp box (53x120mm), **novelty elephant form**, back with hinged side opening lid and single concave compartment.
Estimate. \$150 - 200
- 1110 **Brass Box**, brass stamp box (110x70mm), **Arts & Crafts form** with curved feet and sterling silver art nouveau inlay at sides and top, hinged front opening lid and single slope compartment.
Estimate. \$100 - 150
- 1111 **Brass Case**, brass stamp case (25x38mm), raised Great Britain 1d QV stamp on front and reverse, hinged bottom and clasped top opening to two sleeved compartments, each sleeve with engraved "W. Avery & Son - Redditch"; ca. 1878.
Estimate. \$250 - 350

Ivory Stamp Boxes



- 1112 **Ivory Box**, ivory stamp box (80x33mm), engraved gold gilded spear & floral design and rope bordering, front opening hinged top and three ramped compartments, France ca. 1900, rare.
Estimate. \$500 - 750
- 1113 **Ivory Box**, ivory stamp box (71x33mm), engraved floral corner inlay design on lid, front ivory push bottom clasp and hinged front opening top, three sloped compartments.
Estimate. \$150 - 200
- 1114 **Ivory Box**, ivory stamp box (66x51mm), plain flared design with push button lid clasp, hinged front opening top, two sloped compartments.
Estimate. \$150 - 200

- 1115 **Ivory Box**, ivory stamp box (66x51mm), plain flared design with push button lid clasp, hinged front opening top, two sloped compartments.
Estimate. \$100 - 150

Tortoiseshell Stamp Boxes



- 1116 **Tortoiseshell Box**, tortoiseshell lined wood stamp box (95x55mm), plain rectangular form full tortoiseshell lined exterior, top with silver inlay floral design and bordering, three ramped compartments.
Estimate. \$300 - 400
- 1117 **Tortoiseshell Box**, tortoiseshell stamp box (67x47mm), plain form with sterling silver inset "Stamps" in script on lid and push button clasp, hinged front opening top, two ramped compartments and green velvet lined inner lid, Birmingham 1897.
Estimate. \$200 - 300
- 1118 **Tortoiseshell Box**, tortoiseshell stamp box (69x57mm), plain round edge form, silver inlay wreath on lid, hinged front opening top, two wooden ramped compartments.
Estimate. \$100 - 150

Wooden Stamp Boxes



- 1119 **Wood Box**, novelty wood, metal and rubber box (70x116mm), steam engine automobile form, hinged front opening top with three ramped compartments.
Estimate. \$150 - 200

Stamp Boxes



1105



1107



1108



1109



1110



1111



1113



1114



1115



1117



1118



1120

- 1120 **Wood Tartanware Case**, wood stamp case (26x30mm), pull off top lid and single compartment, gold "M'Beth" name and logo on front.
Estimate. \$100 - 150
- 1121 **Wood Tartanware Box**, circular wood stamp box (46x46mm), central inset Great Britain 1d QV stamp on top, pull off top lid with single compartment.
Estimate. \$100 - 150
- 1122 **Wood Tartanware Box**, wood lacquered box (68x46mm), with Tartan pattern at top and sides, gilt "Mac Duff" at back center of lid, hinged front opening and two ramped compartments.
Estimate. \$100 - 150
- 1123 **Wood Tunbridge Box, Thomas Littleton Green (Rye) ca. 1937**, wood lacquered stamp box (122x50mm), plain rectangular form, lid with three mosaic bordered Great Britain stamps, pull off lid and three compartments, two ramped at ends.
Estimate. \$200 - 300
- 1124 **Wood Tunbridge Box**, wood stamp box (36x40mm), intricate framed Queen Victoria portrait design on lid, pull off top and single compartment.
Estimate. \$100 - 150
- 1125 **Wood Tunbridge Box**, wood stamp box (62x35mm), lid entitled "Stamps" with intricate patterned border and side design, pull off top and single compartment.
Estimate. \$100 - 150
- 1126 **Wood Tunbridge Box**, wood stamp box (94x51mm), plain rectangular form, with intricate mosaic pattern on lid, hinged front opening top and three ramped compartments.
Estimate. \$100 - 150
- 1127 **Wood Tunbridge Box**, wood lacquered stamp box (161x51mm), plain rectangular form, lid with four mosaic bordered Great Britain stamps, pull off lid and four compartments, two ramped at ends.
Estimate. \$100 - 150

Porcelain Stamp Boxes

- 1128 **Porcelain Box**, "peint main limoges" stamp box (75x37mm), blue wash and black stripe design with rose design on lid, hinged with brass edge and floral clasp, two ramped compartments.
Estimate. \$150 - 200
- 1129 **Porcelain Box, Belleck (Ireland) 1898**, stamp box (62x42mm), gold and baby blue dot design with floral accents, sloped lid and two ramped compartments.
Estimate. \$150 - 200
- 1130 **Porcelain Box**, "peint main limoges" Griselles stamp box (80x40mm), blue with gold floral patterning with rose and gold design on lid, hinged with brass edge and floral clasp, two ramped compartments.
Estimate. \$150 - 200

- 1131 **Porcelain Box**, "Frankfurt TM" stamp box (92x44mm), in dark blue with gold framed lady and minstrel scene on lid, pull off lid and three sloped compartments.
Estimate. \$100 - 150

Various Stamp Boxes

- 1132 **Papier-Mâché Box**, French lacquered stamp box (145x55mm), black plain rectangular form, with four French stamp reproductions in lid and postal guides and rates on sides and bottom, front push button clasp and hinged front opening lid, four compartments.
Estimate. \$500 - 750
- 1133 **Papier-Mâché Box**, lacquered Russian stamp box (84x50mm), plain rectangular form with lid painted with peasants riding in troika scene, hinged front opening lid with three ramped compartment and red interior, Vishniakov factory mark on inner lid.
Estimate. \$150 - 200
- 1134 **Plastic Box**, vulcanite stamp box, circular screw top lid with "The America International Mfg. Co., Chicago" logo and "A Bicycle That's Right - As Good As Its Name" slogan, reverse with 1896 Newton calendar; rare.
Estimate. \$100 - 150
- 1135 **Needlepoint Sampler Cases**, three cases, c. 1900's, perforated needlepoint board, side pocket opening, sides with multicolored bordered needlepoint verse; some wear to one.
Estimate. \$100 - 150

Stamp Dispensers



- 1136 **Silver Dispenser, William Hornby (London) 1902**, sterling Lantz's patent stamp dispenser (86mm tall) handle with water sprinkler to dampen envelope before application, rare.
Estimate. \$500 - 750

Stamp Boxes



1121



1122



1123



1124



1125



1126



1127



1128



1129



1130



1131



1132



1133



1134



Ex 1135



1138



1141



1142



1147



1145



1137 **Silver Coil Roll Dispenser, Shreve, Crump & Low Co. (Boston, Mass.),** sterling 1,000 stamp coil roll dispenser (90x32mm), circular form on balled feet, pattern bordering with monogram on one side, compartment with spindle and dispensing slit near top, most attractive.
Estimate. \$400 - 600

1138 **Silver Coil Roll Dispenser Box, sterling triple coil roll dispenser (150x54mm), plain pill shape with dispensing slits on front, large fancy monogram on lid, hinged front opening top, gold wash interior and three coil spindles.**
Estimate. \$200 - 300



1139 **Silver Coil Dispenser, Gorham Inc. (Providence, R.I.),** sterling stamp coil dispenser (50x50mm), inset green guilloche enamel with floral accents on lid, hinged opening with gold wash interior and central spindle, marked sterling.
Estimate. \$150 - 200

Stamp Boxes



- 1140 **Silver Coil Dispenser, Revere Silversmiths (Brooklyn, N.Y.),** sterling stamp coil dispenser & moister combination (31x31mm), with moister container lid, marked sterling.
 Estimate. \$150 - 200
- 1141 **Silver Coil Roll Dispenser,** sterling tubular stamp coil roll dispenser (45x12mm), raised floral design, top pendent ring and turn button and bottom, marked "A.M Co." and sterling.
 Estimate. \$100 - 150
- 1142 **Silver Coil Roll Dispenser, Black, Star & Gorham (New York, N.Y.),** sterling coil roll dispenser (33x42mm), plain forward slanted form, monogram on top, from window thumb slide and dispensing slit at bottom.
 Estimate. \$100 - 150

Scales



- 1143 **Silver Scale, Howard Co. (New York, N.Y.),** sterling balance scale for letters (172x125mm), plain oval base with pierced scroll design, similar pieced letter/weight plate, central weight platform and five counter weights.
 Estimate. \$750 - 1,000



1144 **Silver Scale, H. Matthews (Birmingham) 1910**, sterling letter scale and stamp box combination (55x37mm), rectangular base with pull out drawer at bottom with single ramped gold wash compartment for stamps, spring balance scale calibrated in ounces with celluloid tablet bearing postal rates.
 Estimate. \$600 - 800

1145 **Silver Scale**, sterling quadrant letter scale (115x18mm), scale in ounces and grams, tripod floral scrolled legs and target letter plate, marked sterling.
 Estimate. \$300 - 400



1146 **Brass & Tortoiseshell Postal Scale**, brass balance letter scale (203x151mm), flared tortoiseshell base on wood backing, with ornate brass floral scroll inlay, fine scale with pieced scroll platforms and matching set of 5 counterweights with velvet inline inset in front, an exquisite scale, very rare.
 Estimate. \$750 - 1,000

1147 **Brass Postal Scale & Case, James Allen (Birmingham) 1888**, Allen's combined stamp case and letter scale (25x29mm), Maltese cross shaped with scale showing ounce and pence rates, clasp back opening with single compartment, registered design no. 112078.
 Estimate. \$200 - 300

1148 **Brass Postal Scale & Stamp Box**, brass stamp box and letter scale combination (61x82mm), flared form with pull out drawer at from near base, with two gold wash ramped compartments, top portion spring scale with face plate in ounces, English.
 Estimate. \$150 - 200

1149 **Brass Postal Scale**, English brass balance scale for letters, footed wood base with three insets for weights and 3 counter weights, with postal rate on letter plate; very fine condition.
 Estimate. \$100 - 150

1150 **Brass Postal Scale**, English brass balance scale for letters, footed wood base with three insets for weights and 5 counter weights, with postal rate on letter plate; minor wear.
 Estimate. \$100 - 150

Desk Sets



1151 **Silver and Tortoiseshell Desk Set, George Betjeman & Sons (London) 1904**, sterling and tortoiseshell stamp box and inkstand combination (209x95mm), flared rectangular tortoiseshell base with silver feet, silver stand at center with fine cut glass inkwell with silver hinged lid, two stamp boxes at either side with hinged side opening lids engraved "Stamps" in script, single gold wash ramped compartments, pen rest brackets at front, a wonderful combination desk set of the highest quality, very rare.
Estimate. \$2,000 - 3,000



1152 **Silver Desk Set, John Grinsell & Sons (Birmingham) 1905**, sterling stamp box, calendar, inkwell and watch combination (71x115mm), desktop style on balled feet, with front window inset lid showing calendar, hinged pull down lid with two pocket compartment on backside of lid, curved pen rest just behind lid, central top with hinged front opening lid revealing watch (in working order) incorporated in lid and inkwell, very fine and rare.
Estimate. \$1,000 - 1,500



1153 **Silver Desk Set, George Stockwell (London) 1929**, sterling stamp box, inkwells, clock and pen box combination (180x102mm), all over engine turned design with matching guilloche enamel lids and clock border, large front slopes lid with large compartment for pens, top center lid opening to three sloped stamp compartments, ball lids at sides opening to inkwells, very rare and beautiful.
Estimate. \$1,000 - 1,500



1148



1149



1150



1161



1162



1160



1154 **Silver Desk Set**, sterling coil roll box, inkwell box and matching base with pen holder and calendar (170x62mm), each with inset blue guilloche enamel, round coil dispenser with gold wash interior and central spindle, round inkwell box with glass inkwell, separate base with ball pivot pen holder and calendar back plate with black enamel terrier clip, boxes marked sterling.
Estimate. \$600 - 800



1155 **Silver Desk Set**, sterling coil roll box and matching base with pen holder and calendar (170x62mm), each with inset green guilloche enamel, round coil dispenser with gold wash interior and central spindle, separate base with ball pivot pen holder and calendar back plate with original 1893 celluloid calendar plates, box marked sterling.
Estimate. \$400 - 600



1156 **Silver Desk Set, Stokes & Ireland (Chester) 1903**, sterling stamp box and inkwells combination (221x98mm) tray desk set form with balled feet plain base and box with rope edging, central stamp box with hinged lid and two ramped compartment, gold wash interior, mounts at sides with two crystal cut glass inkwells with matching hinged silver lids.
Estimate. \$400 - 600



1159 **Silver Desk Set**, sterling inkwell holder and pen rest (173x118mm), rimmed patterned tray with feet, oblong inset pen rest in front and square inset behind for molded glass inkwell with hinged silver lid, English with hallmarks worn.
Estimate. \$200 - 300



1160 **Silver Desk Set, Pairpoint Mfg. Co. (New Bedford, Mass.)**, silver plate stamp box and inkwell holder combination (252x95mm), raise pattern tray with feet, central hinged lid box with cast dog, single sloped compartment and personal engraving on lid, two inkwell holders on either side with glass inkwells with pull off silver lids.
Estimate. \$150 - 200

1157 **Silver Desk Set, Mauser Mfg. Co. (New York, N.Y.)**, sterling stamp box and inkwell holder combination (252x95mm), ornate raised floral scroll tray, central hinged lid box with two ramped compartments, inkwell jars at sides with pull off lids, headboard with raised cherub portrait, monogram and pen rest brackets, a gorgeous showpiece.
Estimate. \$400 - 600

1161 **Silver Desk Set, I.F.S. Ltd. England**, silver plated stamp box and ink well holder combination (180x77mm) truck form with lion head knockers at sides, hinged lid opening to central stamp box with single concave compartment, inkwell insets at either side with glass inkwells with silver lined openings.
Estimate. \$150 - 200

1162 **Wood Tunbridge Desk Set**, wood lacquered stamp box, inkwell holder and pen rest combination (215x181mm), sloping base form with bun feet, intricate floral design with mosaic bordering, central velvet lined inset for glass inkwell with hinged top, stamp box on either side with cube pattern mosaic lift off lids, single ramped compartments, pen rest brackets in rear.
Estimate. \$500 - 750



1158 **Silver Desk Set**, silver plate stamp box, inkwell and pen nib wipe combination (185x77mm), desk set form, base and feet with raised floral scroll pattern, central hinged pull tab lid with single ramped compartment, left with nib wipe brush and container, at right bracket holder for cut glass inkwell with hinged silver top, pen rest brackets at front.
Estimate. \$200 - 300



1163 **Porcelain Desk Set, "SP Dresden"**, white porcelain stamp box, inkwells and seal holder combination (180x180mm), octagonal form painted with floral and bird scenes, stamp box with pull off top and two ramped compartments, two seals and two inkwells with taper holder in the center, pen rest brackets, one of the seals jammed otherwise fine and rare.
Estimate. \$750 - 1,000



1165



1166



1167



1169



1170



1164

Porcelain Desk Set, white porcelain stamp box, inkwells and seal holder combination (180x180mm), octagonal form painted with Asian inspired floral and bird scenes, stamp box with pull off top and two ramped compartments, seal and two inkwells with taper holder in the center, pen rest brackets, marked "Nast á Paris 1904".
Estimate. \$500 - 750

1165 **Brass Desk Set**, French champlévé stamp box and inkwell combination (215x148mm), ornate base with scroll fringe and multicolored enamel designs, stamp box at center with figure in recline in hinged lid, two concave compartments, inkwell at either side with hinged lids, inset pen well in front.
Estimate. \$250 - 350

1166 **Papier-Mâché Desk Set**, German stamp box and inkwell combination (220x160mm), black balled feet base with integral stamp box at rear center, painted Asian scenes and floral motifs, box with hinged lid and single ramped compartment, velvet line insets at either side for two glass inkwells; couple minor dings to base.
Estimate. \$200 - 300

Match Cases

1167 **Gold Case**, gold plated sterling match case (38x47mm), light blue guilloché enamel front and reverse, side flip top lid and bottom striker, Norway.
Estimate. \$200 - 300



1171



1172



1173



1174



1176



1177



1168 **Silver Box**, sterling go-to-bed match box (49x49mm), novelty **English letterbox form**, with red and white enamel lettering and rate panel, pull up top with single compartment, striker at bottom and match holder at top, London (maker and date marks worn), very rare.
Estimate. \$750 - 1,000

1169 **Silver Case**, silver plated match case (37x68mm), shape of a "U.S. Mail" pouch with raised letters, strap and lock, reverse with inside view of various letters, side flip opening top and striker inset at bottom.
Estimate. \$200 - 300

1170 **Silver Case**, sterling match case (36x67mm), raised rock patterning embellished with four different 1870's U.S. coins, side flip opening top and bottom striker; Birmingham ca. 1880's, marked sterling.
Estimate. \$200 - 300

1171 **Silver Case**, silver plated match case (60x39mm), envelope design with inset U.S. 2¢ Washington stamp canceled by New York postmark, side flip opening with pendent ring, striker at right.
Estimate. \$150 - 200

1172 **Silver Case**, silver plated match case (61x29mm), "Scientific American" newspaper and wrapper design with inset enamel stamp canceled by New York postmark, flip side opening with "Pat. Oct 14. 90" imprint on lip.
Estimate. \$100 - 150

Stamp Boxes



1178



1179

1173 **Silver Case**, silver plated match case (61x29mm), “**Scientific American**” newspaper and wrapper design with inset stamp canceled by New York postmark, flip side opening with “Pat. Oct 14. 90” imprint on lip.
 Estimate. \$100 - 150

1174 **Silver Case**, silver plated match case (61x29mm), “**Scientific American**” newspaper and wrapper design with inset blue enamel stamp canceled by New York postmark, flip side opening with “Pat. Oct 14. 90” imprint on lip.
 Estimate. \$100 - 150



1175 **Silver Case, Lawrence Emanuel (Birmingham) 1886**, sterling match case (34x41mm), inset enamel women in bathing suit with “A Match for any man” on side of wheeled dressing closet in background, top flip side opening lid and striker at bottom.
 Estimate. \$500 - 750

1176 **Silver Case**, sterling match case (38x65mm), raised U.S. 1890 2¢ Washington stamp design with floral embellishments, side flip top lid and bottom striker, marked sterling, excellent condition.
 Estimate. \$300 - 400

1177 **Silver Case**, sterling match case (39x60mm), flip top opening and match striker at bottom, high embossed golfer motif and scroll bordering.
 Estimate. \$100 - 150

1178 **Brass Box**, brass match box (45x35mm), dual enamel lid with women and man fishing scene on top and naughty inside with women with legs in air (priest fishing), spring closing lid and front side striker.
 Estimate. \$150 - 200

Cigarette Cases

1179 **Silver Cigarette Case**, sterling cigarette case (135x79mm), envelope style with inset black inlay U.S. 3¢ Washington stamp canceled by 1939 Los Angeles postmark, side button clasp and spring opening front, gold wash interior.
 Estimate. \$100 - 150