

AFFILIATED
SOCIETY

The Journal of the

STAMP-BOX

Collectors Society

L



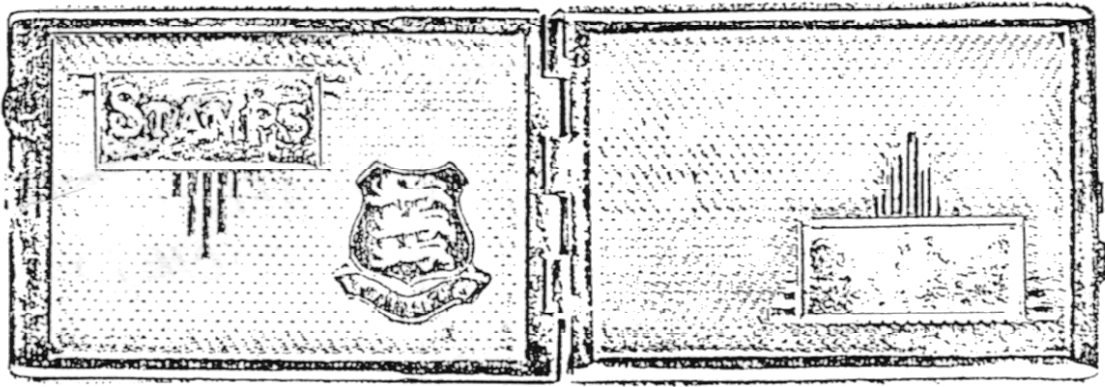


Fig. 1

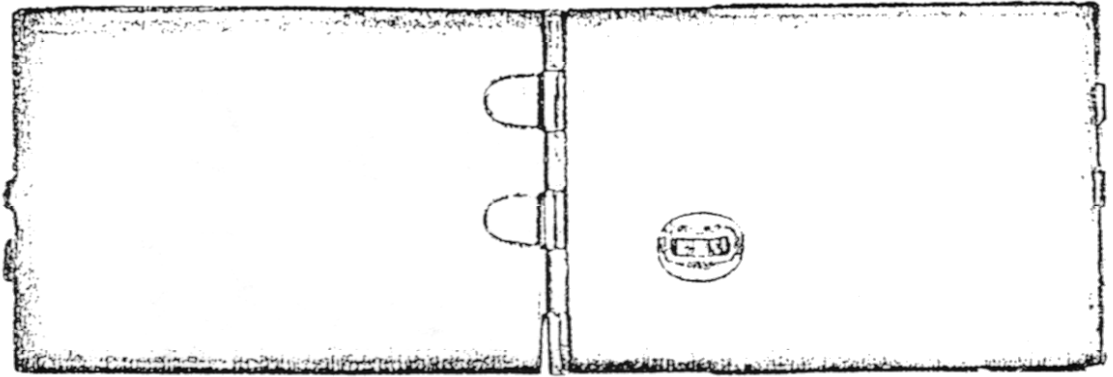
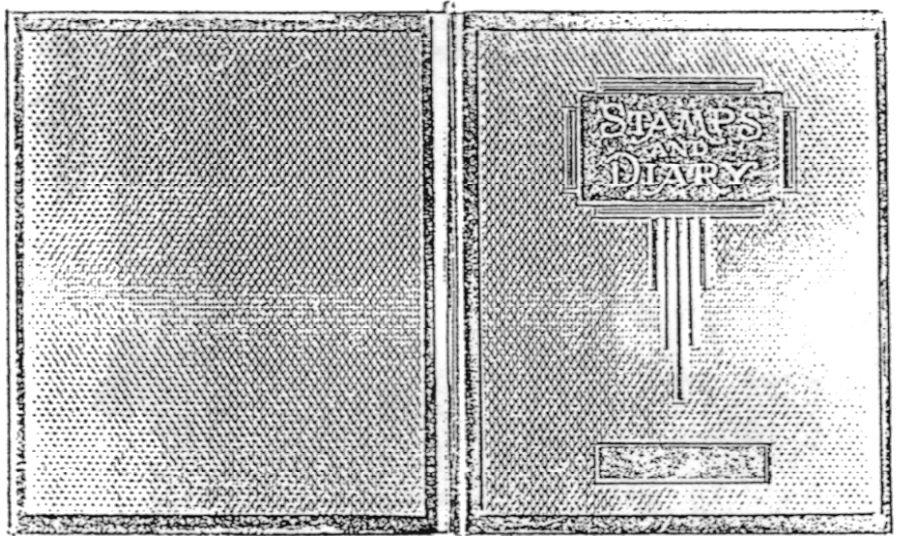


Fig. 2



UK. 22826483

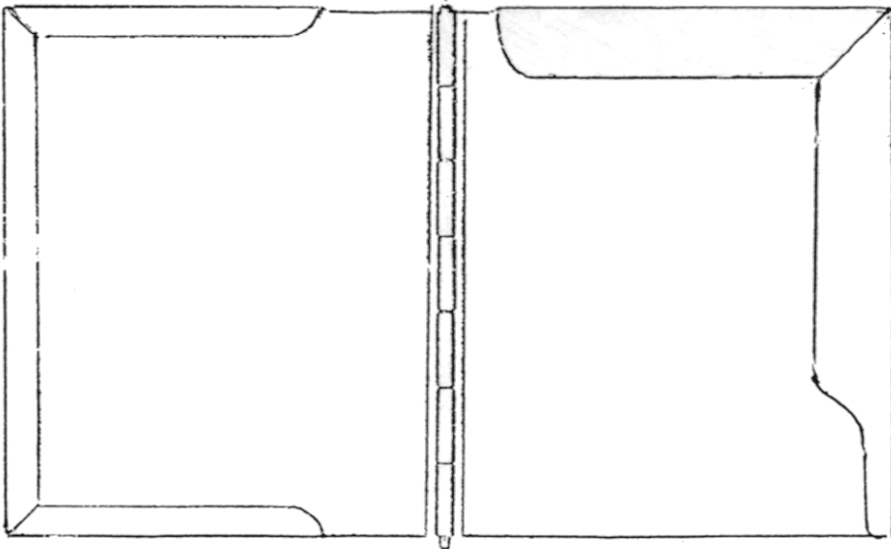


Fig. 3

EDITORIAL

The meeting at the Royal Horticultural Hall in October 1986, at the time the British Philatelic Federation held its annual Exhibition, was a success on all counts.

It was not a formal meeting, no minutes were taken or discussed, the sole topic of conversation was Stamp Boxes in all their many facets. I had no time to count, as people were continually on the move, but I guess we had an average of about 25 people present. I say people and not members advisedly, as husbands brought their wives, and vice versa, and much to my amusement, an elderly lady member brought her daughter and son-in-law. It appears that this lady has her collection on permanent loan to the National Postal Museum, so that is worth a trip if you are in the neighbourhood. Two members brought their children and one or two non-members wandered in and out, so we had quite a good gathering.

Most members brought some of their treasures; one member who is in business in the West End, brought a stamp box made by FABERGE. This was approximately the size of a match box. [REDACTED] was challenged to put a price on it and a figure of £5 - 6,000 was discussed generally by members. However, it's owner, although a dealer in this field had no intention of parting with it. The box came from his own collection and had the name of the gentleman who made it, on the lid. Simple in appearance, it needed a thorough examination to appreciate the beautiful workmanship of this piece.

[REDACTED] (of Phillips the Auctioneers) excelled himself in the talk he gave on the subject of stamp boxes and allied items. As this was an informal meeting, there were many questions which developed into discussions. One subject of particular interest stood out. The question was raised as to the validity, or otherwise, of restoring a case or box. After some well informed comments from the floor, I believe that the view of the guest speaker won the day, in that his argument was, "...you may do what you wish to something you own, but should you attempt to put it to auction, or offer it for sale by any other method, then you must inform the potential buyer what you have done". This I believe is fair comment and I should apply to any transactions our members may do.


As the 'bar' was open, courtesy of your officers and most ably run by [REDACTED] throughout the proceedings, it made for a most enjoyable morning and, as expected, we were late in vacating the room.

By the time you read this, we shall know whether we are going to have another meeting in March at the same venue. If we do, I hope just as many of you will turn up with your treasures and meet your fellow enthusiasts for a look, a natter and an update as to what your Society is currently doing.

In this edition of the Newsletter you will find the first listing of the many silver items that are extant, listings that are courtesy of our members. But I wish to backtrack for a moment to the chrome stamp case listings. We have a few further towns to add to our list, as follows.

From a lady member living in [REDACTED] ..and a badge from the Scottish Empire Exhibition of 1938. For a few coppers recently, I unearthed a rather battered chrome stamp case a photocopy of which is Fig.1. What is unusual about this case, is that it appears to be made from two fronts. The badge is attached by an eye and not glued on as the others are and there are two prongs on the inside to hold the booklet, which is unlike

the others again. There are no numbers on the case, but the words 'British Made' and 'Pro. Patent' are quite clear on the front. Pro Patent is probably Provisional Patent. I would be interested to hear whether anyone else has a similar case. Incidentally, I did say the case was battered, but the badge 'Jersey' is quite clear. (Fig.1 inside cover).

The same good lady from  has also sent me a photostat of another item not known to me. It appears to be the same size as the usual chrome cases, but hinged on the long side, once again, I would like to hear from anyone who has a similar article. (Fig. 2 & 3)

A word about copyright. We print items which members send to us, the origin of which we do not know. We therefore apologise in advance, if we inadvertently infringe someone's copyright. We have no hesitation in allowing anyone to copy from our Newsletter, as long as we are given credit for this.

STAMP BOX COLLECTORS SOCIETY
INCOME AND EXPENDITURE ACCOUNT YEAR ENDED 30th SEPTEMBER 1986

Subscriptions		420
Bank Deposit Interest		2
British Philatelic Trust Grant		50
		<u>472</u>
Newsletter Costs	344	
Postage and Stationery	41	
BPF Subscription	10	
Room Hire	<u>20</u>	415
<u>EXCESS OF INCOME OVER EXPENDITURE</u>		<u>57</u>

BALANCE SHEET AT 30th SEPTEMBER 1986

<u>CURRENT ASSETS</u>		
Bank Current Account		3
Bank Deposit Account		<u>159</u>
		162
<u>CURRENT LIABILITIES</u>		
Creditors		<u>105</u>
		<u>57</u>

Represented by

<u>INCOME AND EXPENDITURE ACCOUNT</u>	<u>57</u>
---------------------------------------	-----------

IN THE BOX

A member from [REDACTED] (15), after supplying us with a useful list of items in his collection, asks whether there is a foolproof way of telling whether 2 boxes he has, one each of ivory and tortoiseshell are really made of the materials stated.

I should like to thank all the members who took the trouble of listing some of their many items from their collections. You will find the lists on other pages. Please keep this up and one day we might have a comprehensive listing of the many lovely items made in days gone by.

A member from [REDACTED] (21) sent me the following information of a recently formed society. The interest to our society is that Mauchline ware has stamp boxes in their catalogues and so are collected by both our society members and those of the Mauchline Collectors Society.

1. SHIRE ALBUM No. 140, Mauchline Ware by John Baker. This is a fairly recent addition (1985) to the useful Shire booklet series. It costs £1.25 from booksellers or, in case of difficulty from Shire Publications Ltd. Cromwell House, Church St., Princes Risborough, Aylesbury, Bucks, HP17 9AJ.
2. Pinto E.H. & E.R. Tunbridge and Scottish Souvenir Woodware. London. Bell & Sons. 1970. This can probably be borrowed from Public Libraries.

A pat on the back from one of our admirers who came to our meeting and enjoyed herself so much she took the trouble to write your officers a thank you note. Thank you dear lady from [REDACTED]

Quite a number of you are sending in both photographs and photostats of items in your collections. Unfortunately, most are almost impossible to reproduce with the facilities open to us. As a small society, we cannot afford a glossy magazine and we have to resort to black and white photocopying methods of printing. Thank to people who advertise in our journal, we are able to publish 4 times a year. Without their help, I believe that twice a year would be the most we could manage. So please do not be disappointed if your particular item does not appear; we keep them for reference in any case.

Appropos of the above, we have enough material to continue publishing for many an issue. It is surprising the amount of information that your Society has been responsible for unearthing.

A member from [REDACTED] (M66) has given us the following details of a book in his possession. British Silver Marks by Bannister published by Foulsham Ltd. What makes this book different from the other silver marks listings is that this one lists the makers names, so that with the initials that appear on many pieces, we can look up the makers name. Can any member tell us whether he/she has a copy to spare? We hope to get in touch with the publishers in the future for permission to reproduce the makers names.

We are listing overleaf, with the permission of the auctioneers, Phillips, the list prices realised for the auction of stamp boxes and cases which took place on 8th May, 1986.

Prices realised for sale 26050 - POSTAL HISTORY & STAMP BOXES - 8th May 1986

Lots not included in this list either failed to reach the reserves, were withdrawn, or did not bring a bid.

The prices shown are the hammer prices and do not include the Buyer's Premium or Value Added Tax, where this is applicable.

Lot	£	Lot	£	Lot	£	Lot	£	Lot	£
1	180	24	50	47	85	72	55	94	55
3	120	25	88	48	62	73	28	95	52
4	170	26	115	49	52	74	20	96	30
5	125	27	175	50	210	75	42	97	70
6	72	28	50	52	120	76	40	98	125
7	65	29	140	53	185	77	32	99	36
8	92	30	20	55	82	78	82	100	440
9	140	31	120	56	310	79	50	102	150
10	82	32	30	58	24	80	55	103	48
11	120	33	420	59	48	81	50	104	58
12	155	34	90	60	62	82	32	105	370
13	115	35	92	61	380	83	40	106	310
14	62	36	52	62	70	84	42	109	260
15	165	37	340	63	180	85	100	110	92
16	120	39	105	64	105	86	38	111	78
17	95	40	52	65	170	87	38	112	40
18	360	41	38	66	85	88	40	113	48
19	370	42	60	67	65	89	50	114	120
20	140	43	150	68	30	90	92	115	60
21	105	44	230	69	65	91	70		
22	110	45	200	70	58	92	48		
23	75	46	140	71	72	93	48		

Early in November, I gave a display of stamp boxes and cases to a local society. I have been giving stamp displays for many years, but when I was asked to give a display of items our Society is interested in, I was rather reluctant to comply with the request. Stamps, I know. I have been collecting, studying, researching and writing about them for many decades, but our Society is so young and the amount of information available at the moment so sparse, that I would have rather not obliged in this instance.

As it turned out however, I had no need to worry, as I had persuaded the programme secretary not to book me for a full evening, but to allow me to fill in after their A.G.M. I was rather surprised at the amount of interest shown and the reception I received. I finished the evening to loud applause, accepted two new members for the Society and the following week in the post, came another invitation to display to the Brighton Society.

We now come to the reason for writing the above. I haven't the amount, or variety, of material to entertain a society of that standing for a full evening and on my own, so I have provisionally pencilled in the date, in September 1987, hopefully with a view to arranging a Society display. Therefore I would appreciate at least three other members to accompany me on this outing, so that we might show the world that a) we are capable of giving a display and b) that we have the quality of material to do it and c) to show what fascinating objects we collect.

Now for some interesting correspondence from a member (52) from

Dear

We have here in the United States something called a catalogue mailorder firm. These have been being cloned over the past several years until we are just besieged with catalogues. Every mail brings two or three new ones. To say they have become a nuisance, is to greatly understate the situation.

However, in the past month, I have learned to look with new respect on these nuisances. Many of them are illustrating and selling STAMP BOXES! The catalogues used to be just thrown away. Now I must go through each one carefully to see if perhaps it has something new to call a stamp box.

I have clipped out the pictures and descriptions of several of the boxes and noted the companies which have them available. I won't say which ones I've actually purchased but will say I have bought a few.

You will note, our old friends the brass box with the sunflower top is available. I did not buy one of those since I already have one. Mine came from one of those 'antique' shops in the Lake District of England. I got it in the summer of 1985 and paid £3 for it.

I hadn't had time to read the Newsletter prior to sending in the pink form with my subscription. Therefore, I didn't know about your request for each to list and describe several of our collection. Well, at least you know I have one of the brass sunflower ones.

Sincerely,




**In the tradition of
Bilston and Battersea**

The method of enamelling on copper was originally created in England in the 18th century, the charming boxes known as "toys" were decorated with delightful scenes of flowers. This lovely 2" high stamp box is hand painted with colored rose blossoms. The old technique is still carried on in England by the firm Toye, Kenning, & Spencer. Place a roll of stamps inside and you'll have a beautiful and practical desk decoration.

No. 6425 \$90.00

Casual Lining
Kent Road
New Milford, Connecticut 06776

One of the examples in the catalogues.

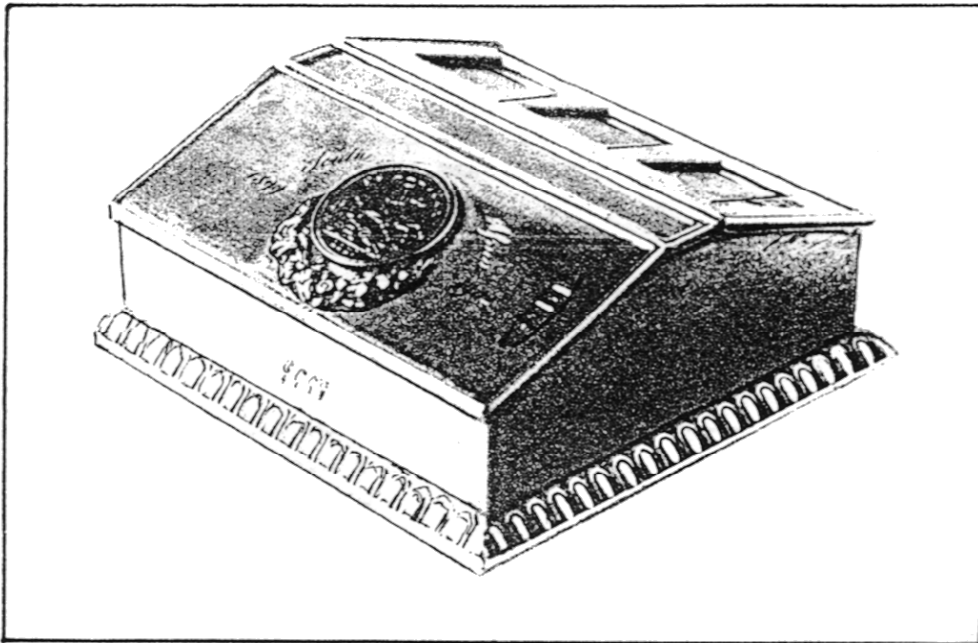
Here we reproduce an interesting letter from a member in [REDACTED] which poses two questions.

Dear [REDACTED]

I found Newsletter No. 4 very interesting - a lot of work must have gone into its preparation, my congratulations to all concerned.

BOER WAR

I have a silver desk stamp box, as illustrated, 92mm square, 37mm high with two flaps, one covering 3 compartments for stamps and the other for pins etc. The 'pins' flap is engraved "South Africa 1899 1902" and has a 'coin' inset over a wreath. The 'coin' is a satirical counter referring to the departure of the Duke of Cumberland to occupy the throne of Hanover in succession to his brother William IV in 1837. The Duke was very unpopular because of his attitude to Reform. The resemblance of these pieces to sovereigns was exploited by many dubious characters and they were 'reminted' in quantity in the 1870s. (The British Museum have produced a very interesting leaflet about this counter). Perhaps one of our members may know if there is any significance between this counter and the Boer War.



THE BOER WAR BOX

My first stamp box was given to me by my grandmother many many years ago. Plain wood circular 44mm diameter with 1d Red on lid with the inscription; From Birnam Hill, Dunkeld McLean & Son, Publishers. Any relation to Rowland or Fanny or is it the name of a village, it may even be a hill - any help would be appreciated.

I am slowly cataloguing and photographing my collection (about 170) and as requested start with details of four.



I have asked [REDACTED], your Vice President, to reply on the next page to the questions posed.

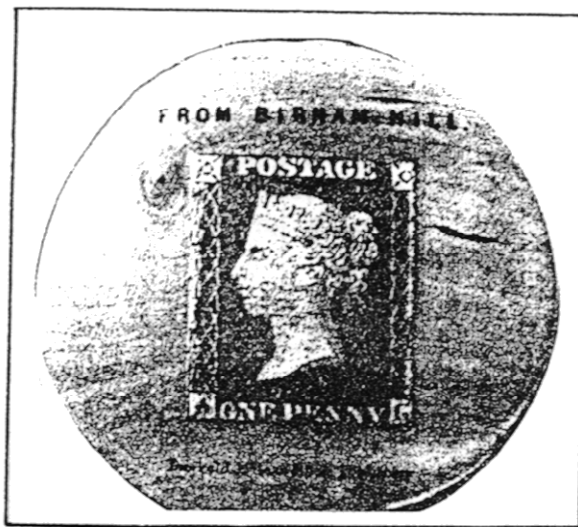
Interesting Origins -

A member from [redacted] has written asking for details of two stamp boxes presenting a puzzle for him. In one case I can certainly help but in the second, will venture an educated guess based on historical knowledge.

"BIRNAM HILL" is the place named on a circular wooden box. This small village is indeed famous - from Shakespeare to Beatrix Potter no less! It is 13 miles N.W. of Perth on Tayside. The village is actually called BIRNAM, but there is indeed a hill there, with steep slopes leading to Birnam Wood. It can be seen from Dunsinane Hill, where Shakespeare's Macbeth saw out the fatal prophecy that he would fall when Birnam Wood came to Dunsinane. What is claimed to be the last oak of the original Birnam Wood is now an ancient tree by the fast-flowing Tay.


In 1856, the 6th Duke of Atholl refused to let the railway cross his estates and so the village of Birnam came into being. The railway arrived there in 1856, but it took another 6 years of negotiation for the Duke to allow a route over his land and the railway to continue to Inverness. During that time, villas and hotels were built and Birnam grew up as a separate village across the river from the town of Dunkeld. And of course, the stamp box has printed on it - Dunkeld, McLean and Son Publishers. I would think that this fact establishes the actual village beyond doubt. Finally - many

English families used to rent villas in Birnam in the summer and autumn and among them were the Potters from London. Their daughter, Beatrix, wrote picture letters, later expanded into "Tale of Peter Rabbit" and "Tale of Mr. Jeremy Fisher" on two successive September days in 1893 at the house called Eastwood. (Ref: AA Book of English Villages p.59)



THE BIRNAM BOX

With reference to the second query concerning a silver desk stamp box, engraved S. Africa 1899-1902 with a coin inset. (Duke of Cumberland to Hanover 1837). I can find no connection between this royal personality and S. Africa, not even a place name. However, an educated guess based on historical research is this - the 1902 indicates that the box was made after the end of the Boer War and Peace of Vereeniging and thus commemorated that event. It was thought that a decorative embellishment would look good and a coin was welded on, held by an engraved scroll. A current coin of the realm could not be used, of course, but an interesting "coin" could, particularly as the date on it when Cumberland took over Hanover upon the demise of William IV of England, was also the date of the accession of Queen Victoria to the British Crown. As Queen Victoria died almost at the end of the Boer War, the date of her accession would seem a good choice on a coin with which to embellish a silver box commemorating the end of the Boer War. A final note, is that the coin contains the letters - "To Hanover". Hanover - the name is used several times in Cape Colony, S. Africa as there were S. Africans in this area of Hanoverian descent. In 1914-18 their descendents subsequently supported the Kaiser.

TRADE TALK by 

The big event in the trade so far this season has to have been Harmers Auction of December 10th which included 100 or so lots of stamp boxes. This was their largest accumulation of stamp boxes for sale for a very long time, and, along with Phillips sale of last Spring, has created a yardstick for stamp boxes and where the demand lies. It is interesting to note that Phillips strong points pricewise are the single, double and treble what they call 'hemispherical section' stamp boxes, the trough stamp boxes with glass mounted windows. They managed to fetch about 50% more all round in the Phillips sale (see last Journal) than at Harmers. However, they are not particularly uncommon, so I would not treat Phillips sale as gospel for the future, but they do seem to have the clientele for the straightforward stamp boxes.

Harmer's strength lies in the demand from their clientele for the more unusual boxes and miniatures. A few

GREAT BRITAIN ILLUSTRATED LISTS

We recommend you send for the above illustrated lists, and would welcome your making comparisons with our competitors.

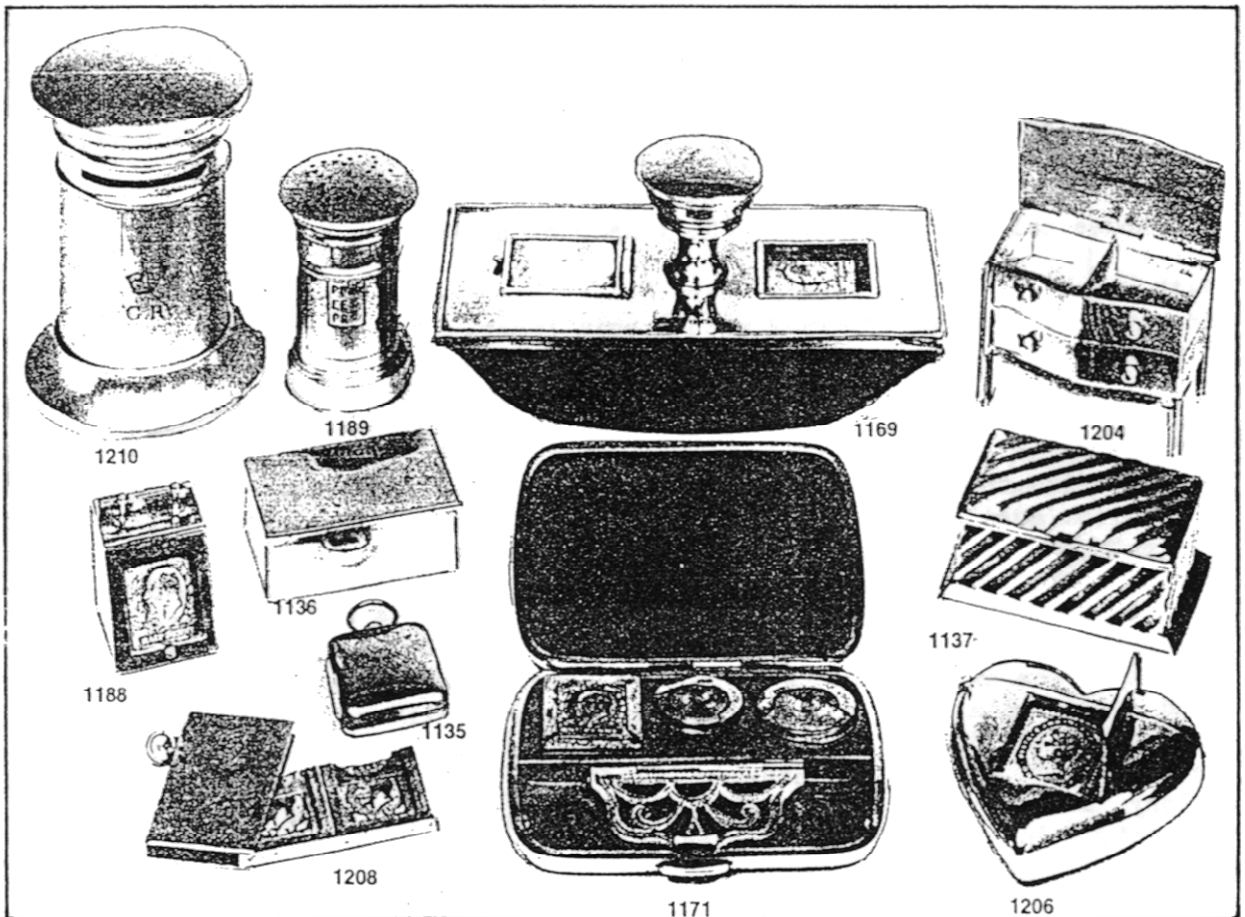
It pays to "shop around", and whereas we do not make any claims to be the cheapest always, we do try to be competitive.

Whether you collect issued stamps or die proofs and colour trials etc., we think there will always be something to interest you in our Lists.

If you would like to be included on our Mailing Lists for Great Britain stamps, please write to the address below.

CANDLISH McCLEERY

P.O. BOX 11
 WORCESTER WR8 9BQ
 Telephone 0386 750063



A SELECTION FROM HARMER'S AUCTION

Reproduced by kind permission of Harmers of London

Prices realised, plus 10% premium & VAT at Auction
December 9.10. 1986

LOT NO.	£	LOT NO.	£	LOT NO.	£	LOT NO.	£
1133	✓ 310	1160	✓ 135	1187	✓ 130	1215	✓ 60
1134	✓ 240	1161	✓ 310	1188	✓ 310	1216	✓ 50
1135	✓ 210	1162	✓ 75	1189	✓ 210	1219	✓ 70
1136	✓ 110	1163	✓ 42	1190	✓ 46	1220	✓ 24
1137	✓ 135	1164	✓ 37	1191	✓ 30	1221	✓ 42
1138	✓ 105	1165	—	1192	✓ 220	1222	✓ 21
1139	✓ 80	1166	—	1193	✓ 95	1223	✓ 22
1140	✓ 320	1167	—	1194	✓ 60	1224	—
1141	✓ 75	1168	✓ 46	1195	✓ 39	1225	✓ 16
1142	✓ 85	1169	—	1196	✓ 100	1226	✓ 28
1143	✓ 60	1170	✓ 460	1197	✓ 36	1227	✓ 23
1144	—	1171	✓ 310	1198	✓ 60	1228	✓ 60
1145	—	1172	✓ 180	1199	✓ 50	1229	✓ 26
1146	✓ 85	1173	✓ 90	1200	✓ 140	1230	—
1147	—	1174	✓ 60	1201	—	1231	—
1148	✓ 320	1175	✓ 290	1202	✓ 48	1232	✓ 30
1149	✓ 90	1176	—	1203	✓ 60	1233	✓ 15
1150	✓ 95	1177	✓ 135	1204	✓ 575	1234	✓ 55
1151	✓ 80	1178	✓ 75	1205	—	1235	—
1152	✓ 50	1179	✓ 65	1206	✓ 460	1236	✓ 85
1153	✓ 28	1180	—	1207	✓ 320	1237	✓ 175
1154	✓ 340	1181	—	1208	✓ 85	1238	✓ 190
1155	✓ 100	1182	—	1209	✓ 80	1239	✓ 22
1156	✓ 250	1183	—	1211	✓ 75	1240	✓ 80
1157	—	1184	✓ 30	1212	✓ 55	1241	✓ 320
1158	✓ 80	1185	—	1213	—	1242	✓ 140
1159	—	1186	✓ 280	1214	✓ 36	1243	✓ 40
						1244	—
						1245	—
						1210*	✓ 230

of their estimates were very low, but confidence and demand reigned supreme on the day. Although the room was not packed, commission agents were in force, and with strong book bids there were some very good prices.

I reproduce for your interest a list of the prices attained and hope that any members who were successful at the auction are happy with their purchases. It is not often that such a selection is offered on the market.

CHELSEA ANTIQUES FAIR

[REDACTED], our Hon. Sec., has been invited by the organisers of the Chelsea Antiques Fair to put on an Exhibition of Stamp Boxes and allied desk-top items for the March Chelsea Fair (10th to 21st). The organisers are offering two, four shelved showcases for the display and he is happy to oblige.

The only problem was the date limit. As the Fair itself has an early 19th century date-line on its items there had to be a compromise of a 1910 date limit on these display items, otherwise as we all know it couldn't be done. The vast majority of stamp boxes (or at least the most interesting ones) are from about 1890 to 1910, give or take a bit.

All those members attending our Stampex meeting will be able to receive complimentary tickets (from [REDACTED]) to the Chelsea Antiques Fair to view the Exhibition and to see the Fair itself. This is one of London's most prestigious Fairs for the Antique World, and is a marvellous opportunity to advertise the existence of our Society. Leaflets about our Society will be distributed at the Fair.

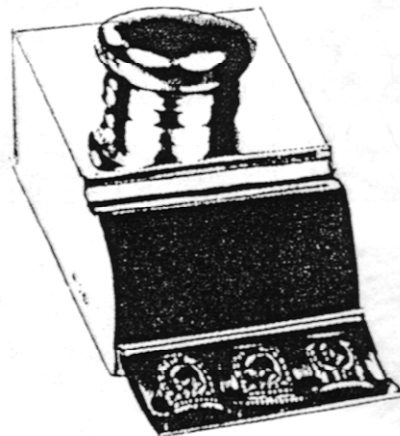
We are hoping to include in this sending, copies of our leaflet for each member to distribute. Should you require more, please contact your Hon. President.



Phillips

FINE ART AUCTIONEERS & VALUERS SINCE 1796

Regular auctions occasionally including
Stamp Boxes and Stamp Balances



Please advise us of your interest so as we can record it in our Specialist Register.

Enquiries from intending vendors welcome.

7 Blenheim Street, New Bond Street, London W1Y 0AS. Tel: 01-629 6602

LONDON · PARIS · NEW YORK · GENEVA · BRUSSELS

*Eighteen salerooms throughout the United Kingdom
Members of the Society of Fine Art Auctioneers*

THE LATEST LISTINGS

<u>Office and Description</u>	<u>Size</u>	<u>Year</u>	<u>Maker</u>	<u>Remarks</u>
<u>London</u>				
Desk piece for stamps and pins	92mm x 92mm x 37mm high	1901	N(?) B A(?)	
Bee Hive Removable roof	37mm x 42mm x 25mm high	1981	JJD	Very realistic STAMPS engraved on porch
Inkwell, stamp compartment (3) and pen rest	168mm x 105mm x 95mm to top of inkwell	1900	C & S Co Ltd.	
<u>Birmingham</u>				
Table (LHS as Newsletter) Curved front legs	58mm x 38mm x 44mm high	1909	A & JZ	Regd. No. 346815 (both tables)
<u>London</u>				
Inkwell with pull down section for nibs etc. and double compartment silver gilt stamp holder	86x57x66	1905	G B & Sons	Similar to inkwell in the Phillips advert on page 5 of the latest issue of the journal but smaller with only 2 stamp flaps. I have the 3 stamp flap inkwell as well
Stamp moistener with stamp compartment in front	84x31x14	1898	SM & Co.	Engraved with 'Jones, 41 St JAMES'S STREET. S.W.
<u>Birmingham</u>				
Stamp box in shape of a wheelbarrow	66x26x29	1908	-	
Stamp coil dispenser in shape of whistle	75x30x18	1904	GY & Co.	
Two compartment box with tortoiseshell lid with silver flower design worked on lid	53x33x33	1906	L & S	Silver flower on tortoiseshell lid is an iris
<u>Edinburgh</u>				
Double compartment stamp box with shaped and curved lid	53x39x18	1922	JG	3 troy ounces Britannia Silver
<u>Chester</u>				
Envelope single size double sided	-	1904	-	
Twin compartment envelope. Engraved foliated scrolls with "Butterfly" for initials (none)	41mmx25mm	1911	A & LL	

<u>Office and Description</u>	<u>Size</u>	<u>Year</u>	<u>Maker</u>	<u>Remarks</u>
<u>Chester</u>				
Single envelope. Engraved foliated scrolls. Heart for initials (none)	27mm x 23mm	unreadable		unreadable
Single in form of small book. Edges of top & bottom patterned with two rows of dashes & a line. Inside section operates on swivle from corner. Narrow bar keeps stamp in place. Finger hole.	23mm x 28mm x 5mm	1903	HC*WN	Uses alternative date letter shield. Could these makers be the same as Birmingham's later C & N see entries 3 & 4 below?
<u>Birmingham</u>				
Single in form of small book. Plain-Line only around edge of front & back. Inside section swings out from corner (as 2 above)	23mm x 28mm x 6mm	1914	C & N	
Single in form of small book. STAMPS engraved in scrolling writing diagonally across front. Otherwise as 3	23mm x 28mm x 6mm	1911	C & N	
Single Curve ended flat container. Interior swings out to provide thin stamp sized compartment. (Picture p8 recent Journal shows similar type 3rd from L).	22mm wide 27mm long 4mm thick	1879	-	Carries the Patent Office Registration Mark. Parcel 2, 28th Jan (or Feb) 1880.
<u>Chester</u>				
Envelope type 'stamps' on front	small	1903C	-	good condition (ex Phillips sale)
Combined sovereign & stamp case	medium	1910		Bought in Canada
Silver envelope. Fully engraved with 'ring' at right side	28x23mm	1903	AEJ	
<u>Birmingham</u>				
Silver Envelope with 'STAMPS' engraved	28x23mm	1905	C & N	
<u>Mauchline Ware</u>				
2 Compartment Box (Sycamore) with transfer of Devenshire Place, Eastbourne	80x55mm	circa 1845?	Smiths of Mauchline	
<u>Tunbridge Ware</u>				
Queen's head in Tesserae + "Postage" & "One Penny" & Letters L & F inlaid	38x		Henry Hollamby (1870-1890)	(Good possibility)

<u>Office and Description</u>	<u>Size</u>	<u>Year</u>	<u>Maker</u>	<u>Remarks</u>
<u>Birmingham</u>				
Plain silver hinged wallet lined with red leather with compartments for visiting cards & stamps etc - secured by a silver pencil fitted along one side	86mm x 55mm	1909	C & N	
Engraved silver box for visiting cards with two stamp compartments on the inside of the lid	75mm x 47mm x 7mm deep	1901		
<u>London</u>				
Silver case for Stamp Booklet engraved "STAMPS" on front	70mm x 50mm	1911	M & W (Mappin & Webb Ltd)	
<u>Birmingham</u>				
2 Compartment Silver Box on four dolphin legs with silver mounted glass cover displaying two stamps	50mm x 31mm	1902	M Bros	
<u>Chester</u>				
3 Compartment Silver Stamp Box Stamps in cursive writing diagonally across lid	77x30x18mm	1900	S.L.Ltd Chester	Gilt Interior
<u>Birmingham</u>				
Casket-Type Silver Stamp Box. Glass Inset in lid. Q.V. 1d lilac inserted	35x32x17mm	1900	D & R (?) Birmingham	Interior of lid lined with red leather.
Rectangular 'twin' box with hinged lid and with two curved compartments	46x27x41mm (deep)	1898	Maker's mark T.H. in a shield Thomas Hayes	Heavy Gauge
<u>London</u>				
In the form of a 'Knife Box' with shaped front and hinged lid engraved	37x40x57mm	1909	Maker's mark H B A in a shaped trefoil Henry & Albert Batson	
<u>Birmingham</u>				
Rectangular box with shaped corners and hinged cover Single stamp container i.e. not twin.	25x22x6mm	1888	Joseph Angel	The back has a graduated postal scale for ounces and pence, and there is a letter holder attached to the balance spring suspended below the side. Registered No. 102604



<u>Office and Description</u>	<u>Size</u>	<u>Year</u>	<u>Maker</u>	<u>Remarks</u>
<u>London</u> Brass Stamp Box with molders in the shape of a Cash Register. Hinged lid at top covering three stamp compartments. Registered Design No. 51623	100x100x80mm	1856	Adolphe Frankau & Co.	Details of this box appear on P.11 of the Victoria Society's Newsletter dated Autumn 1986.
<u>Chester</u> Small "Book" style. Opens rather like a pocket magnifier.	28.5x24	1901	HWL	
Envelope - floral pattern	26x23	1904	AEJ	
<u>Birmingham</u> Envelope - floral pattern	29x21.5	1903	ALL ^d	
<u>London</u> Silver Box with hinged glazed lid.	40x40x30	1904	GY & Co	
Red Leather Box. Word 'Stamps' inlaid in silver	5x5x2.5	1902	GK & Sons	
<u>Birmingham</u> Silver trough with ball feet and two compartments - glazed lids	5.5x3.5x2.5	1903	C & C	
Satchel type. "Stamps" across bottom	29x23	1919/ 20	C & N	
<u>Chester</u> Small Envelope	28x24	1907/ 08	AEJ	
<u>London</u> 2 Compartment pivot type case. Inscribed "from Hull School of Music 1901"	50x28	1901/ 02	(WN) (GN)	

A MAD HATTER'S TEA PARTY?

Not quite, even though Lewis Carroll was instrumental in producing a stamp case. The tea party referred to above, really is an invitation which your officers are extending to all our members to partake of tea and cakes at 2pm on Saturday, 7th March 1987 at the Royal Horticultural Hall in London.

The refreshments will be supplied once again courtesy of your officers and like the last meeting, will not be a charge on the slender finances of our Society. The agenda for the meeting is set out below. We hope you can all turn up.

AGENDA

1. President welcomes members and guests.
2. Election of Officers.
3. President's Report.
4. Secretary's Report.
5. Treasurer's Report.
6. Any other business.
7. Display by  a member from 
8. Break for refreshments.

Close Meeting.

As members know, our rules insist that your officers offer themselves for election each year.

At our next meeting, details of which appear in another part of the Newsletter, a year will have passed since the election of your present officers and the time has come to re-elect.

All your officers are once again prepared to continue running your Society on your behalf and are therefore putting themselves forward en bloc for re-election.

Should any member wish to stand for election for any of the posts of President, Vice President, Secretary or Treasurer will they please notify me by return, with a proposer and seconder, when their nomination will be put to the vote at our next meeting.

```

*****
*                                     *
*           We buy and sell           *
*                                     *
* STAMPS, COVERS & COLLECTIONS      *
*                                     *
*           of the World.            *
*                                     *
*           HEALEY & WISE             *
* P.O.Box 7, Tadworth, Surrey.      *
*                                     *
*           Established 1885          *
*                                     *
*****

```