



# The 'Blue Eyes' Collection of Fine and Rare Stampboxes

Wednesday 15 July 2009 at 4.30 p.m.

In sending commission bids or making enquiries, this sale should be referred to as **Blue Eyes 9015**

**Spink:**

69 Southampton Row, Bloomsbury  
London WC1B 4ET

Vat No: GB 791627108

Telephone: 020 7563 4000  
Fax: 020 7563 4066

**Web Site:**

For more information about Spink services, forthcoming sales and sales results you can access the Spink web site at [www.spink.com](http://www.spink.com)

**Catalogue Subscriptions:**

Please telephone 020 7563 4080 or fax 020 7563 4085 or e-mail [catalogues@spink.com](mailto:catalogues@spink.com) for details.

**Viewing:**

Friday 10 July 2009 10.00 a.m.- 5.00 p.m.  
Monday 13 July 2009 10.00 a.m.- 5.00 p.m.  
Tuesday 14 July 2009 10.00 a.m.- 5.00 p.m.  
Wednesday 15 July 2009 10.00 a.m.- 3.00 p.m.  
(Or by appointment please ring Guy Croton)

**Enquiries for this sale:**

**Specialist:**

Guy Croton 020 7563 4074  
[gcroton@spink.com](mailto:gcroton@spink.com)

**Bids:**

Commission Bids/Results/Enquiries 020 7563 4034/4020/4005  
Commission Bids Email Address [auctionteam@spink.com](mailto:auctionteam@spink.com)  
Bids Office Fax Number 020 7563 4037  
Shipping & Delivery 020 7563 4034/4020/4005

**Accounts:**

Juan-Pierre Adams (*Client Liaison*) 020 7563 4018  
[jpadams@spink.com](mailto:jpadams@spink.com)  
Anna Sviridova (*Vendor Settlements*)  
[asviridova@spink.com](mailto:asviridova@spink.com) 020 7563 4023

Buyers please note that by placing bids in our Auctions, whether such bids are made in person or by way of telephone bids operated by Spink, commission or online or email bids, you are agreeing to our Terms and Conditions of Business set out at the back of our catalogues and on our website at [www.spink.com](http://www.spink.com).

**Please read these Terms and Conditions of Business carefully before bidding.**

Spink UK will be closed to the public from 1st August 2009 to 16th August 2009 inclusive. We shall of course endeavour to ship out all purchased and paid auction lots to our clients by Wednesday 29th July 2009.

During this period, should you have any queries please direct them to [info@spink.com](mailto:info@spink.com) and we will respond to you as soon as we can. We apologise in advance for any inconvenience this may cause.

Please note that both Spink Asia and Spink USA will remain open during the above period.

Front Cover Illustration: 325

Back Cover Illustrations: 159, 126, 177, 74, 8, 10



## INTRODUCTION

The “Blue Eyes” Collection of fine and rare Stamp Boxes could be one of the most prestigious offerings of its kind in auction history. Its origins start with humble beginnings when some thirty years ago the owner, a keen philatelist, bought their first Stamp Box.

It was in a local antiques market that the collector purchased what would be the first of hundreds of Stamp Boxes. Their passion for the rare and the beautiful would lead them to collect items from all corners of the globe.

As you will see in the following pages, this fantastic collection consists of nearly 500 items, with a variety of examples in differing materials and manufacture. It is obvious in flipping through the catalogue that the collector’s taste was both extravagant at times as well as simple and classic - from a superb jewelled box, by the famous Russian jewellers Fabergé, to humble wooden souvenir boxes. Also featured are several elusive English silver novelty boxes that have resided in other great collections over the years and have seldom changed hands, illustrating their true rarity.

This is truly a unique chance to acquire some of the most important Stamp Boxes to come to the market for many years. There is something for all collectors from the advanced to the novice. A collection of this magnitude is a rare gem and an opportunity not to be missed. It has been a true pleasure to work with such a distinguished and adored collection from start to finish.

Guy Croton

Wednesday 15 July 2009

Sale commences at 4.30 p.m.

**STAMPBOXES AND RELATED ITEMS**

**GOLD BOXES & CASES**



- 1 1880c. 14ct. two compartment American masonic case, flat design with a hammered finish, the front with applied gold stags head mounted with an enamel clock, opening in half to reveal a fitted compartment on either side; fine and very rare  
£500-600



- 3 1902 Birmingham 9ct. single compartment case in the form of an envelope, heavily engraved throughout with floral and curlique scrolls, with hinged flap at front opening to a single compartment; very fine and scarce  
£400-450



- 2 1894c. London 9ct. case in the form of an envelope, the front bearing a tiny enamelled 1881 GB 1d. lilac "Cancelled" by a black enamel London duplex cancel dated Feb. 14 1894 and addressed to Johannesburg, the top with a single pivot swing top lid and a chain attachment at side; fine and very rare, this being the first of this type we have seen in gold  
£1,000-1,200



- 4 1903 Birmingham 9ct. case in the form of a purse, plain design with a hinged lid at top opening to a single compartment; fine and very rare  
£450-500



- 5 1920 Birmingham 9ct. case in the form of a book maker's mark J & W, the front and reverse finely engraved with curlique scrolls, and having a single pivot sliding compartment at side opening to a single sleeve for stamps, fine and very rare  
£450-500



- 7 1920c. 14ct. three compartment case by Cartier (New York), plain flat design with a spring loaded hinged lid mounted at the centre of the top, opening to reveal three individual compartments and having a chain attachment at top; fine and very rare  
£1,500-1,800



- 6 1920c. 14ct. case in the form of an envelope, the front and reverse engraved with a linear design and set with a cabochon sapphire clasp opening in half to reveal an interleaved interior; fine and most attractive. Very rare  
£550-600

**A SUPERB AND UNIQUE EXAMPLE  
IN 18CT. GOLD**



- 8 1920c. a superb quality 18ct. French single compartment box, square design, the hinged lid at top with a green enamel pattern surrounding an 18ct. gold replica of the French 1849 Ceres 20c. stamp, opening to a single compartment; an extremely fine box of the highest quality, of which this is the first example of this type that we have seen and probably unique

£5,000-5,500

**AN EXQUISITE TWO COMPARTMENT BOX BY CARTIER, PARIS**



- 9 1925 18ct. two compartment box by Cartier (Paris), finely decorated through-out with a symmetrical linear pattern, the hinged lid at top with a cabochon sapphire thumb piece, opening to two sloped compartments each engraved with a linear design; fine and most attractive. Very rare being the first example of this type we have seen

£3,500-3,800

**ENGLISH SILVER BOXES**



**London Assay Office**

- 10 1869 “MACNEILL’S PATENT STAMP APPLICATOR”, by Robert Hennell, small square design, the sides with engraved scroll work and the top showing embossed profile of Queen Victoria and “patent”; fine and very rare

£1,500-1,800

*Note: it is not known whether these cases were made for retail, or as a private commission for Sir John Macneill to give to friends, but it would appear to be the earliest silver stamp box and pre dates the production of silver cases by some ten years.*

- 12 1891 three compartment box by William Comyns, the skirted base engraved with scroll work, the hinged lid at top embossed with two birds and floral scrolls, opening to a gilded interior with three sloped compartments; fine and scarce

£300-350



- 11 1890 sprung pocket dispenser by George Heath, the hinged lid at top very finely enamelled with a Great Britain 1881 1d. lilac stamp, opening to a gilded spring loaded interior; very fine and rare

£1,500-1,800

- 13 1894 novelty stamp box and inkwell combined in the form of a railway lantern by Samuel Jacob, plain square design with green glass “Light” at front the hinged lid at top with additional hinged section on the underside opening to a sloped compartment; fine and very rare

£1,200-1,500

PROVENANCE:  
The “Paris” collection, December, 2002



- 14 1895 two compartment box retailed by Thornhill London, mounted on a wooden plinth, the base with beaded edge, with a sloped front hinged lid at top decorated with floral scrolls around two circular plaques inscribed ½d. and 1d.; fine and most attractive

£250-300



- 16 1899 novelty box and moistener combined modelled as a tube of paint by Sampson Mordan & Co, plain design with a hinged lid set into front opening to a single sloped compartment, the top with screw cap for filling the water reservoir; fine and rare

£500-600



- 15 1899 two compartment box and moistener combined by Samuel Jacob, plain stepped design, the hinged lid at top opening to two individual compartments and rectangular section for the sponge; fine and scarce

£400-450

**AN EXTREMELY RARE  
THREE COMPARTMENT BOX BY GREY & CO.**



- 17 1899 three compartment box by Grey & Co, circular design mounted on scroll feet, with three individually hinged lids at top inset with stamps opening to gilded sloped compartments, with central finial at top; very fine and attractive. A great rarity  
£1,500-1,800



- 18 1900 stamp holder, letter clip and calendar combined by William Comyns, mounted on a plain oval base the case with hinged lid at top incorporating a framed window showing the calendar, opening to a single sleeve for stamps; fine and very rare

£600-650



- 20 1901 novelty holder finely modelled as the coronation chair, the reverse mounted with single sleeve to hold stamps; fine and rare

£350-400



- 19 1901 single coil dispenser by Charles & George Asprey, domed top design with a single slot at front for dispensing the stamps which are dispensed by turning the handles at either side; fine and scarce

£250-300



- 21 1901 coil dispenser and moistener combined by Aspreys, plain design with a hinged lid at top opening to a blue velvet pad for moistening the stamps which are dispensed through a single slot at face by turning the grooved handle at right; fine and rare

£800-1,000



- 22 1901 novelty stamp and vesta box combined in the form of a lectern by the Goldsmiths & Silversmiths Co. Ltd., the front will pull down drawer for vestas with the striker above, and hinged lid at top with a single window showing a 1d. stamp opening to a single sloped compartment; a very fine example of this very rare and sought after novelty case  
£1,000-1,200



- 23 1901 novelty inkwell and stamp box combined in the form of a coal scuttle, plain design with a hinged lid at top showing applied leaves simulating hinges opening to a single well, the hinged lid at front also with applied leaves opening to a single sloped compartment; fine and very rare  
£1,200-1,500



- 24 1902 single compartment pocket case by Nathan & Nathan, plain book style design with a single pivot slide out compartment; fine

£50-60



- 26 1902 stamp box letter clip and note pad holder combined by Nathan & Nathan, the base in a shield design mounted with a two compartment box which has a spring loaded lid forming the letter clip and note pad holder which stays closed by placing a pen/pencil in the recess at top; a fine and rare combination desk piece

£600-650



- 25 1902 twin coil dispenser by Charles & George Asprey, plain domed top design with two slots at front for dispensing the stamps which are dispensed by turning the handles mounted at either side; fine and rare

£400-500



- 27 1902 twin coil dispenser and moistener combined by Charles & George Asprey, domed top design with a central hinged lid for a moistening sponge, the two slots at front for dispensing the stamps which are dispensed by turning the handles at either side, the base with slide out drawer at foot; very fine and rare

£700-800



28 1902 stamp case, letter opener and magnifier combined by William Hornby and with retailers mark of A. Barrett & Sons, Picadilly, the silver blade mounted with a circular lens at top in turn mounted with a lattice design, the stamp case mounted at top with hinged lid opening to a single compartment; fine and rare

£900-1,000



30 1903 three compartment box and inkwell combined by G. Betjeman & Sons, plain design with curved front mounted hinged lid, opening to reveal three sleeves for stamps mounted on the underside, the top with rounded hinged lid opening to a single glass well; fine

£350-400



29 1902 a superb two compartment box and nib wipe modelled as a coal scuttle by Henry & Albert Batson, retailed by "A BARRETT & SONS 63 & 64 PICADILLY W.", standing on bun feet, the hinged lid at top with two windows opening to two gilded sloped compartments, the the sloped front with large hinged lid beautifully embossed with a scene of two lovers carving their names into a tree with two cherubs nearby playing with two dogs, opening to a compartment for nibs and nib wipe; extremely fine quality being the only example seen by us to date

£1,500-1,800



31 1903 double coil dispenser by Charles & George Asprey, dome top design with additional display window mounted at top, the stamps dispensed through two slots at front by turning the finialed handles at either side; fine and very rare being the first of this type we have seen

£550-600



- 32 1903 inkwell and stamp box combined by Goldsmiths & Silversmiths Co. Ltd., plain spread base design with two hinged lids at top either side of a lided well opening to two sloped compartments, and having a slotted pen rest at front; a fine and rare piece of very good quality  
£650-700



- 34 1904 twin coil stamp dispenser and double inkwell combined by S. Clifford & Co, the top with two slots for dispensing the stamp which are refilled via a hinged door at back the front with curved hinged lid/pen rest, opening to two glass wells; fine and very rare  
£800-1,000



- 33 1904 stamp coil dispenser by J.C. Vickery, plain design with the top hinged to a spread foot having a cut out window at top showing the stamp which is dispensed through a slot in the front; fine and rare  
£400-500



- 35 1904 novelty stamp dispenser in the form of a post box by William Hornby, the top showing a cut out window for viewing the dispensed stamps which are dispensed through the letter plate at front; fine and very rare  
£1,200-1,500

PROVENANCE:  
The "Paris" collection, December, 2002

**AN EXTREMELY RARE AND SUPERB QUALITY  
TORTOISESHELL AND SILVER COMBINATION PIECE**



- 36 1904 an absolutely exquisite silver and tortoiseshell inkstand and stamp combination by George Betjeman & Sons, the very fine rectangular tortoiseshell base surmounted with silver feet at each corner and having two silver stamp boxes inset to the base, each with engraved "Stamps" on the hinged lids opening to single compartments, either side of a decorative silver mount to hold the very fine cut glass silver topped well, also having a silver pen rest at front; a superb combination piece of the highest quality. Very rare

£2,500-3,000



37 1905 stamp booklet holder by C. Griffiths & Co., plain flat design with oval cut out to show the Cypher on the front page of the booklet; fine  
£80-100



39 1905 novelty two compartment box in the form of a cigar box by Goldsmiths & Silversmiths Co. Ltd., the two hinged lids at top each opening to a single concave compartment; a fine example of this popular and rare novelty piece  
£450-500



38 1905 silver and glass two compartment box by Charles & Cohen, the glass base of a symmetrical stepped design mounted with a central silver collar and hinged lid engraved "Stamps" at top, opening to two glass sloped compartments; fine and unusual  
£350-400



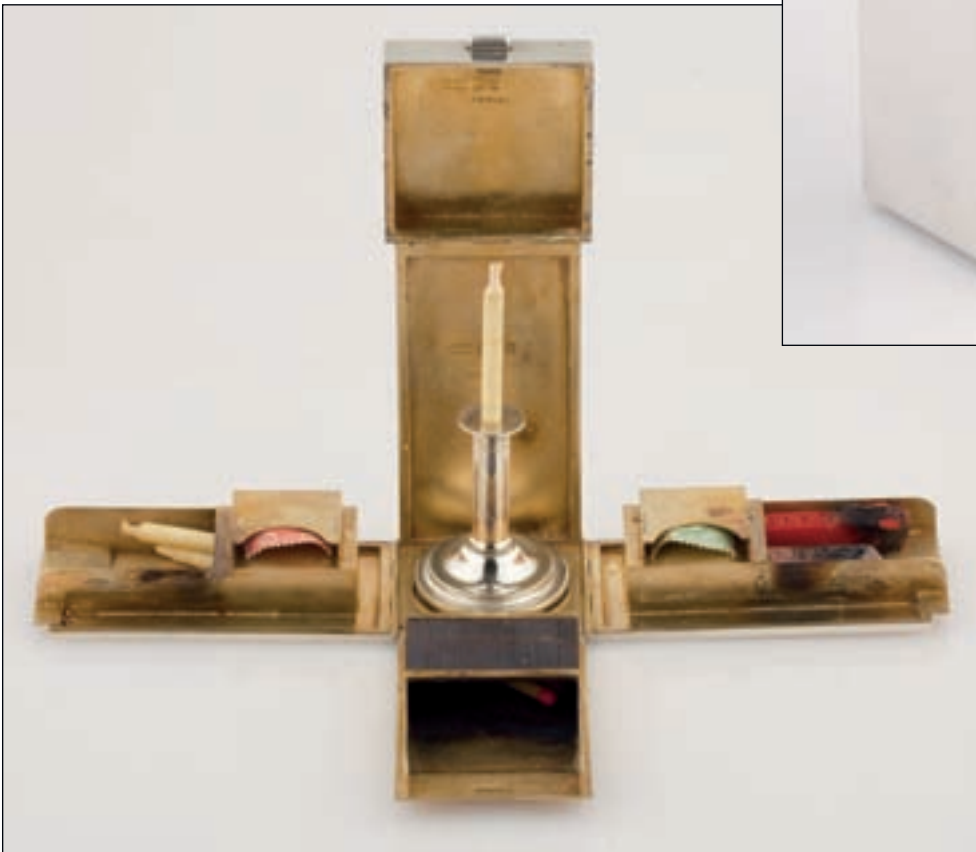
40 1905 silver and glass two compartment box and inkwell combined by Charles & Cohen, the glass well of a plain cubed design, with a silver collar mounted at top having a sliding lid additionally mounted with a two compartment box, and two curled prongs at either side mounted as a pen rest; fine and most unusual  
£550-600



- 41 1905 inkwell and stamp box combined (maker's mark unclear), the capstan style well with hinged lid at top surmounted with a cherub reading a book, which is used as the stamp holder; a fine and most unusual combination. Rare

£1,000-1,200

**A SUPERB TRAVELLING WRITING  
COMPENDIUM BY ASPREY**



- 42 1905 a superb travelling writing compendium by Charles & George Asprey, tall rectangular plain design, with three sides hinged and opening out flat to reveal two stamp compartments at left and right, mounted on top of a sealing wax and taper compartment respectively, vesta compartment at front and the centre housing a miniature taper holder which sits on top of a silver seal; a superb and rare compendium of the highest quality

£2,500-3,000



43 1906 a combination stamp holder, letter clip and aide memoir by Nathan & Nathan, the spring loaded stamp holder mounted just above the the celluloid aide memoir attached to the plain base by a spring loaded hinge; a very rare combination  
£600-700



45 1906 Lantz's patent stamp dispenser by William Hornby and retailed by Asprey, the handle forming a water sprinkler to dampen the envelope before applying the stamp by plunging the the handle; fine and very rare  
£800-1,000



44 1906 Lantz's patent stamp dispenser by William Hornby and retailed by Asprey, the handle forming a water sprinkler to dampen the envelope before applying the stamp by plunging the the handle; fine and very rare  
£800-1,000



46 1906 stamp case letter opener/rule combined by W & G Neal, the rule measuring 1-6 inches with the case attached at top, with hinged lid opening to a single sloped compartment; fine and rare  
£1,000-1,200



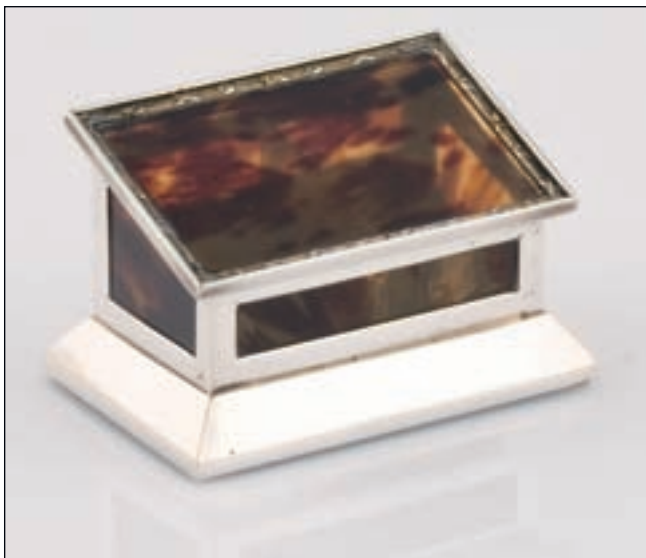
47 1907 a superb quality two compartment box and vesta case combined by Charles Henry Dunemil, the plain base with a spread foot, having three individually hinged lids at top, the central lid opening to a concave compartment for vestas with a striker mounted on the under side, the two lids either side opening to single sloped compartments; a very fine and rare combination

£400-500



49 1907 novelty double coil dispenser in the form of a whistle, the hinged lid at top opening to two spindles either side of a central divider, with a slot either side of the "mouth piece" for dispensing the stamps; fine and very rare

£1,000-1,200



48 1907 silver and tortoiseshell two compartment box by Henry & Albert Batson, the silver base with inset tortoiseshell panels, and the sloped front with hinged lid also with inset panel surrounded with a decorative beading, opening to two compartments; fine and most attractive. Rare

£800-900



50 1908 silver and glass two compartment box and moistener combined by Charles & Cohen, the plain glass base with silver collar and hinged lid at top on one side opening to two sloped compartments the other side with cut out compartment housing a sponge for moistening the stamps; fine and scarce

£400-450

**AN EXTREMELY RARE FOUR COMPARTMENT  
DESK TOP COMPENDIUM BY GREY & CO.**



- 51 1908 large desk compendium by Grey & Co, comprising four compartment box with hinged lid showing four windows at front, inkwell, pen rest and domed top perpetual calendar; a very fine and exceedingly rare combination piece

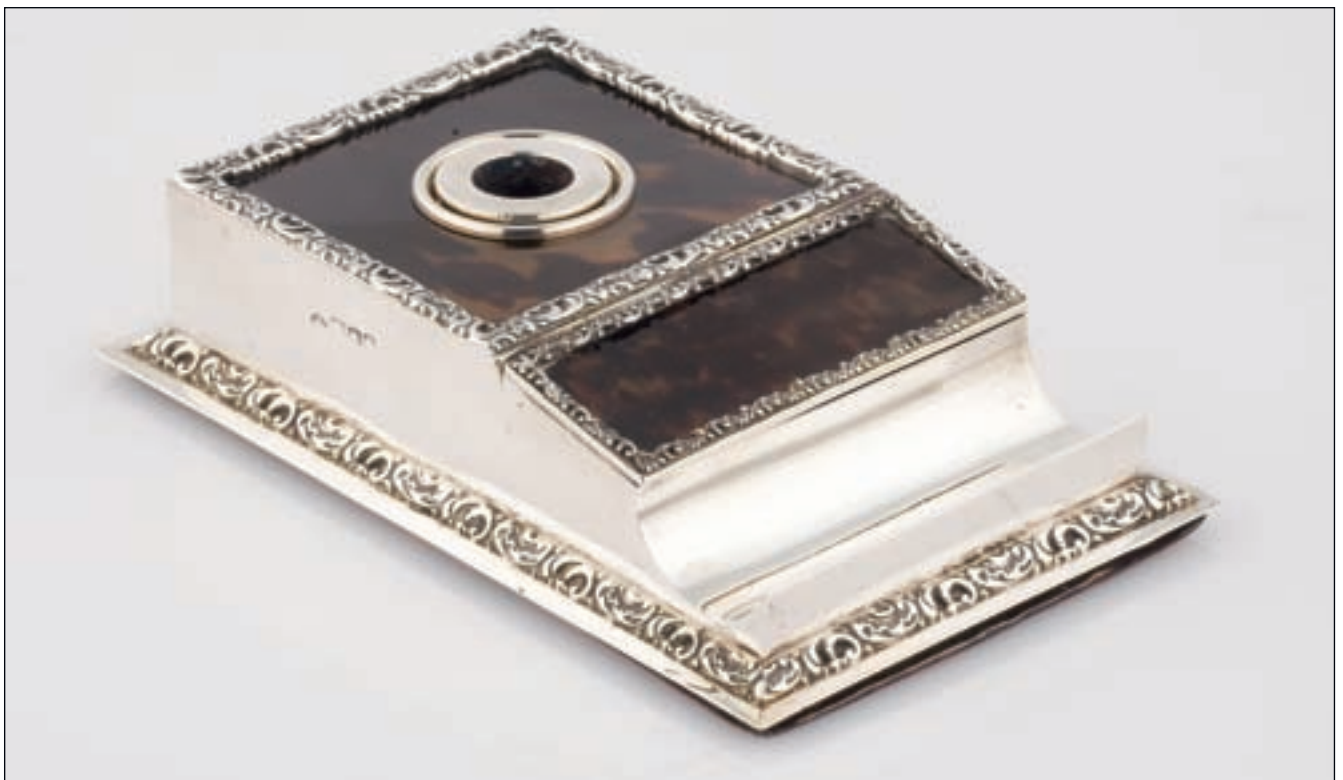
£2,500-3,000

PROVENANCE:  
The "Primrose" Collection, May, 2000



- 52 1910 a very fine tortoiseshell and silver two compartment box and inkwell combined By the Goldsmiths & Silversmiths company, the silver base having a tortoiseshell lid at either side finely set with piquet silver floral basket opening to a gilded slope the inkwell in the centre showing the same design set into the tortoiseshell lid; a very fine quality combination of which this the first we have seen

£1,800-2,000



- 53 1910 tortoise shell and silver three compartment box and inkstand combined by Henry & Albert Batson, retailed by the Gold Smiths & Silver Smiths Company Ltd., the hinged lid at front having a tortoise shell panel surrounded by curlique scrolls opening to three gilded sloped compartments, the top also mounted with a tortoiseshell panel surrounded by the same design, and with a silver mounted porcelain inkwell flush mounted in the centre, the plain base with the original red leather underside stamped in gold tooling with the retailers crest; a very fine and very rare combination, and the first of this type we have seen

£2,500-3,000



- 54 1910 silver glass and tortoiseshell three compartment box (maker's mark unclear), the plain glass base with a star pattern cut into the underside, mounted with a silver collar and hinged lid set with a tortoiseshell plaque finely inlaid with a silver pattern; very minor damage at two corners of the tortoiseshell lid, otherwise fine and most attractive

£600-650



- 55 1911 novelty desk top box in the form of a horses hoof, entirely made of silver, with a hinged lid at top engraved "SWEET HEART" 1892-1910 opening two two sloped compartments; fine and rare

£600-700



- 56 1912 a superb silver and tortoiseshell inkwell and stamp box combined by Henry & Albert Batson, the four sides of the spread base each set with a tortoiseshell panel with an extended silver leaf at each corner, the single compartment box mounted on top of the hinged lid for the inkwell with its window in the hinged lid, opening to a single sloped compartment; an extremely fine and rare combination

£1,800-2,000



**Birmingham Assay Office**

- 57 1880 locket style stamp case by Joseph Hayes Taylor, plain design with a single pivot slide out compartment for stamps; fine and rare. A very early example of a silver case

£100-120



- 59 1888 novelty case and letter scale combined in the form of an envelope by Joseph Allen, the front showing the scale calibrated oz. 0-6 and pence 1-2½, the reverse modelled as the back of an envelope, opening to a single compartment for stamps; fine and extremely rare. Only the second example in silver we have seen

£1,500-1,800



- 58 1883 a single compartment flat case with applied silver balls around the edges to simulate stamp perforations, the front glazed and the hinged lid at reverse embossed "STAMPS"; a very fine and rare early example of a silver case

£350-400



- 60 1890 stamp, vesta case and rocker blotter combined by Levi and Salaman, the silver top in a pressed ribbed design with two hinged lids inset, one with single sleeve for stamps mounted on the under side the other with striker mounted on the underside; fine and rare. An early date for such a combination

£550-600



- 61 1891 two compartment box retailed by Thornhill & Co London, heavily embossed throughout with floral and curlique scrolls, the hinged lid at top opening to two sloped compartments; fine and scarce

£250-280



- 63 1893 a very fine silver and glass inkwell and stamp holder combined, plain square design with the base of the glass well showing a square cut pattern, the silver hinged lid at top embossed with floral scrolls with an additional hinged lid opening to a single gilded slope for stamps; very fine and rare

£700-800



- 62 1892 single pocket stamp and sovereign case combined by Hilliard & Thomason, the front and reverse finely engraved with curliques scrolls, opening in half to a single spring loaded sovereign compartment and single sleeve for stamps; fine and most attractive. Rare

£250-300



- 64 1893 a very fine silver and tortoiseshell stamp case and letter clip combined by Horton & Aliday, the tortoiseshell base mounted with a spring loaded filigree silver clip with central case attached opening to a single compartment with a tortoiseshell rod inside to hold the stamps; fine and most attractive. Very rare, being the first of this type we have seen

£1,200-1,500



65 1895 stamp and vesta case combined maker's mark GU, flat design engraved throughout with curlique scrolls, the vesta striker at front and with two hinged lids at top, the smaller for stamps the larger for vestas; fine and rare

£450-500



66 1895 stamp and snuff box combined by Arthur Cook, plain oval design with a hinged lid at top set into the lid of the snuff compartment, opening to a gilded sloped compartment; fine and very rare. A most unusual combination

£1,200-1,500

PROVENANCE:

Spink Auction, June, 2007



67 1895 silver desk top compendium modelled as a folded page, mounted with a cubed inkwell with hinged lid, two compartment stamp box with hinged lid engraved "STAMPS", vesta holder, taper stick, seal and quill rest at front, each piece individually hallmarked and additionally showing registered design number 251020 on the base; fine and very rare

£2,000-2,500



- 68 1896 three compartment stamp box and pen rest combined by Grey & Co., the box of trough design mounted on scroll feet, with the pen rest mounted at reverse, the hinged lid at top showing three windows, opening to three sloped compartments; fine and rare

£550-600



- 70 1896 novelty two compartment box in the form of a child's cradle made to commemorate the birth of Queen Victoria's first great grandchild by Saunders & Shepherd, the two ends embossed with the British Royal coat of arms, with hinged lid at top, opening to two concave compartments; fine and very rare, this being only the second example we have seen

£1,000-1,200

PROVENANCE:

The "Primrose" collection, May, 2000



- 69 1896 stamp and sovereign case by Saunders and Shepherd, plain rectangular design the front finely engraved with the crest of the Duke of Wellington's West Riding Regiment and inscribed "PRESENTED TO/SURGEON MAJOR SUTCLIFFE,/BY THE MEMBERS OF THE/ABOVE SECTION/ON HIS/RETIRING FROM THE REGIMENT/JANUARY 1898", the case opening in half to reveal a spring loaded stamp compartment and half and full sovereign compartments, the main body also housing a silver pencil; very fine and superb quality

£650-700



- 71 1897 stamp and sovereign case combined, small square design opening in half to a single spring loaded sovereign dispenser, with a single stamp compartment on the under side of the lid; fine and scarce

£200-250



72 1897 two compartment double sided box by A.C. & Co., cubed design, with a hinged lid at opposite sides each with a glazed window and opening to a gilded sloped compartment; fine and most unusual. Scarce

£250-300

73 1897 stamp, sovereign, vesta and cigarette combined by Deakin & Francis, linear design on front and back, opening in half to a hinged lid with striker and two sleeves for stamps mounted on the under side next to a single spring loaded sovereign compartment; very fine. Scarce

£550-600

**AN EXTREMELY RARE SILVER AND ENAMEL  
TWO COMPARTMENT BOX**



74 1897 two compartment box, plain flat design, the hinged lid at top finely enamelled with a replica Great Britain 1881 1d. lilac and 1897 1/2d. vermilion, opening to two concave gilded sloped compartments; a couple of minor dings, in no way affecting the fine appearance. Very rare

£1,800-2,000



- 75 1899 small three compartment box (maker's mark unclear), heavily embossed throughout with hinged lid at top opening to three fitted, sloped compartments; fine and unusual

£250-300



- 77 1900 single compartment case in the form of a book, the front mounted with a single window showing the stamps accessed via a single pivot slide out compartment with a spring loaded interior; fine and most unusual

£150-180



- 76 1900 single compartment pocket style case by S Blanckensee & Sons Ltd., engraved on front and reverse with curlique scrolls, opening in half to a single spring loaded gilded compartment; fine

£50-60



- 78 1900 stamp and nib box combined by H. Matthews, heavily embossed throughout with floral and curlique scrolls, the hinged lid at top opening to an ebonised wooden interior; a fine and rare box of superb quality

£550-600



79 1901 two compartment box and moistener combined, trough design standing on scroll feet, with glass roller centrally mounted between the two hinged lids with windows showing stamps, opening to two concave compartments; fine and very rare

£550-600



81 1902 silver and leather single compartment box, the sloped front hinged lid mounted with silver frame showing a single window, opening to a single sloped compartment; fine

£30-40



80 1901 stamp and sovereign case combined, very finely engraved throughout with floral and curlique scrolls, the hinged lid at top with one end additionally hinged to access the spring loaded stamp compartment, opening fully to reveal a gilded interior with compartments for sovereigns and half sovereigns, the main body also housing a silver propelling pencil; very fine. A scarce combination

£550-600



82 1902 silver and leather two compartment box, the sloped front with silver mounted hinged lid showing two windows, opening to two sloped compartments; fine

£50-60



83 1902 single compartment box by Levi & Salaman, plain trough design standing on four ball feet, with a decorative hinged lid at top opening to a single concave compartment; fine and attractive  
£150-180



85 1902 silver and glass three compartment box by Levi & Salaman, the plain glass base with a symmetrical cut pattern on the underside, the top mounted with a plain silver collar and hinged lid opening to three sloped compartments; fine  
£250-300



84 1902 two compartment box by Levi & Salaman, plain trough design standing on four ball feet, with a decorative hinged lid at top opening to two concave compartments; fine and scarce  
£250-300



86 1902 a fine three compartment box by Deakin & Francis, rectangular form with a finely hammered finish throughout, the hinged lid at top opening to three gilded sloped compartments; very fine and most attractive  
£300-350



87 1902 sloped front three compartment box, plain base with rope effect beading around the edge, the hinged lid showing the same pattern around the rim with a floral pattern in the centre surrounding "Stamps" in manuscript, opening to three wooden sloped compartments; fine and rare, being the first three compartment version of this design we have seen

£350-400



89 1903 silver and glass stamp box and inkwell combined by John Grinsell & Sons the glass body with star pattern cut into the base, mounted with a silver hinged lid opening to two compartments for stamps, the inkwell with silver top and collar; fine and attractive

£500-550



88 1903 stamp and sovereign case combined, plain rectangular design opening in half to reveal a single spring loaded stamp compartment and two sovereign holders, the lid with a spring loaded clip probably for paper money; fine and scarce

£450-480



90 1903 stamp, sovereign and vesta case combined by John Grinsell, square design engraved with foliate scrolls throughout, the top with hinged lid at front opening to spring loaded sovereign and half sovereign compartments, the underside of the lid for stamps with a fine gilded spring loaded clip engraved "Stamps" to hold them in place, the side of the case with hinged lid inset with striker opening to the vesta compartment; fine and most attractive. A rare combination

£500-600



- 91 1904 three compartment box by A & J Zimmerman, plain through design with hinged lid at top with three windows opening to three concave compartments; the feet slightly crushed though easily repairable

£200-250



- 93 1904 Silver stamp and card case combined, plain design with a single sleeve for stamps hinged into the centre of the body, the reverse inscribed "PRESENTED/TO/CAPT. W.G.R. DUGMORE/BY MEMBERS OF/THE TOWN RIFLE CLUB/JERSEY 1911"; fine and scarce

£300-320



- 92 1904 two compartment box by Mappin & Webb, plain base mounted on a spread foot the hinged lid at top with bevelled glass panel opening to two sloped compartments; fine and attractive

£250-280



- 94 1904 three compartment box in the form of a trough, maker's mark W.D., plain base mounted on paw feet, with hinged lid at top embossed with floral garlands, opening to three concave compartments; a fine and unusual example of this type

£350-400



95 1904 inkwell and two compartment box combined by G. Betjeman & Sons, plain bow front design with fold down flap at front opening to a concave compartment for nibs and with two sleeves for stamps mounted on the underside; fine and scarce  
£400-500



97 1904 two compartment box and note pad combined by Levi & Salaman, plain wedge shape design, the two compartment box at back with hinged lid showing windows, the celluloid aide memoir set into the base in front of the pen rest; fine and rare  
£500-600



96 1904 silver and leather three compartment box and moistener combined, the red leather base with a silver mounted sloped front lid opening to three compartments with the glass roller at front mounted with a silver surround; the hinged lid a little fragile, otherwise fine  
£400-500



98 1904 stamp box and moistener combined by Deakin & Francis, quatrefoil design with hinged lid at top showing a glazed window opening to a fine gilded interior with a single concave compartment with a moistening sponge at either side; fine and very rare  
£800-1,000



99 1904 double sided stamp case, the hinged lids at either side neatly enamelled in green the other in red each simulating King Edward VII ½d. and 1d. stamps and having a ring attachment at top; very fine and rare

£800-1,000



101 1905 silver and glass two compartment stamp box and double inkwell combined by Hilliard & Thomason, the glass base mounted with silver lid hinged at front with two windows to show the stamps and two silver hinged lids at top opening to each well; a fine and rare combination

£550-600



100 1905 two compartment stamp box, nib box and rocker blotter combined by W. J. Myatt & Co., the silver top with two hinged lids mounted either side of the central handle with one opening to two sloped compartments, the other to a single concave compartment; fine and rare

£550-600



102 1905 stamp box and rocker blotter combined with maker's mark of WHW, the top of the blotter with a single hinged lid opening to a single sloped compartment, with glass picture frame at the opposite side; fine and rare

£550-600



- 103 1905 stamp box and letter scale combined by Levi & Salaman, the bow fronted scale showing a celluloid plaque with weights and rates, mounted on a rectangular base standing on ball feet with silver fronted wooden drawer at front, opening to a sloped compartment for stamps; fine and very rare

£1,000-1,200



- 104 1905 novelty box in the form of a Victorian knife box by Henry & Albert Batson, the front and hinged lid engraved with floral garlands and bows, opening to a single gilded sloped interior; fine and most attractive. A very rare novelty piece

£1,000-1,200



105 1906 silver and leather stamp and card case combined, plain flat design opening in half to a leather interior with three sleeves for stamps and a pouch for cards; fine and scarce

£150-180



107 1906 silver, glass and tortoiseshell two compartment box by Levi & Salaman, the plain glass base with pattern cut into the underside, with silver collar and hinged lid at top set with a tortoiseshell panel showing a pique work design in silver, opening to two sloped compartments; fine and most attractive. Rare

£500-550



106 1906 capstan inkwell and single compartment box combined by H. Matthews, the hinged lid at top with an additional shield shaped hinged lid opening to a single sloped compartment, opening to a single glass well; fine and scarce

£300-350



108 1906 silver and glass inkstand and stamp box combined, the shaped glass base with pen rest at front and two silver hinged lids opening to gilded sloped interiors, mounted either side of the silver topped well; fine and attractive

£500-600



- 109 1906 silver and glass two compartment box, inkwell and pocket watch holder combined by John Grinsell & Sons, the glass base mounted with a silver collar and lid housing a silver pocket watch at back opening to a single well, the front mounted with a silver collar and lid opening to two glass sloped compartments, with glass pen rest at front; very fine and rare

£1,500-1,800



- 110 1906 a silver and glass desktop stamp box, inkwell, clock and calendar combined, the glass well surmounted with a silver frame, housing the calendar and fold down three compartment case, the lid of the well housing a pocket watch (in working order) with gold hands; a very fine and rare combination the first of this type we have seen

£2,000-2,500



111 1907 a single envelope style case mounted on a pedestal base by Adie & Lovekin; plain design throughout; fine and scarce  
£300-350



113 1907 three compartment box and roller moistener combined (maker's mark C.P.B), the shagreen covered base with silver mounted hinged lid at top with three windows opening to three sloped compartments, the front mounted with a silver collar surrounding the glass roller for moistening the stamps; a most unusual combination. Rare  
£400-500



112 1907 double case formed as an envelope mounted on a pedestal base, the envelope engraved at front with a foliate pattern, the hinged flap at front opening to two compartments; fine and attractive. Rare  
£350-400



114 1907 novelty single compartment box modelled as a wheelbarrow, the hinged lid at top with a single window showing a stamp, opening to a single compartment; a fine and very rare example of this most sought after novelty design  
£1,000-1,200



115 1908 silver and ebonised wood single compartment box by Levi & Salaman, the wooden base with a silver fronted drawer opening to a single concave compartment and the top surmounted with a silver Rhino; fine and unusual  
£500-550



116 1908 silver and glass two compartment box, the plain glass base with a symmetrical pattern cut into the under side and silver collar and hinged lid at top, opening to two sloped compartments; fine  
£250-300

**ONE OF THE RAREST NOVELTY BOXES EXTANT**



117 1908 novelty stamp box and letter opener combined in the form of a golf club by Crisford & Norris, the club head with a hinged lid at top opening to a single concave compartment, the “shaft” of the club made of mother of pearl, for use as a letter opener; fine and extremely rare being one of the rarest and most sought after of the novelty boxes which has been missing from most of the great collections to have come to the market

£2,500-3,000



118 1909 two compartment box in the form of a trough by Levi & Salaman, plain design standing on four ball feet, with a spring loaded hinged lid at top opening to two concave compartments; a few minor dings, otherwise fine

£50-60



120 1909 silver and glass single compartment box maker's mark JT & S, plain square design, the silver lift of lid at top embossed with floral and curlicue scrolls; fine and attractive

£80-100



119 1909 two compartment pocket case, purse style design engraved with a linear pattern on front and reverse, opening to two compartments; fine

£60-80



121 1909 two compartment box by Henry Matthews, plain design with sloped front hinged lid showing two windows, opening to two gilded sloped compartments; fine and scarce

£280-300



- 122 1909 stamp and sovereign case combined, the front and back engraved with an engine turned and linear design, opening in half to reveal a spring loaded stamp compartment and three sovereign compartments; fine and rare

£500-550



- 123 1909 two compartment box and inkwell combined by William Hutton & Sons, capstan style design mounted on a stepped square base, fitted with a gilt lined drawer at front opening to two sloped compartments; fine and very scarce

£600-700



- 124 1909 ink and stamp combined, the front with decorative hinged lid at front opening to two compartments the back mounted with a capstan style well surrounded by decorative embossing and mounted with a pen rest in the centre; fine and most attractive

£1,000-1,200



- 125 1909 novelty box in the form of William Shakespeare's desk as seen at his house in Stratford Upon Avon, the lid of the desk opening to two sloped compartments; a fine example of this very rare and popular design

£1,200-1,500

**THE ONLY KNOWN EXAMPLE TO DATE**



- 126 1909 novelty box modelled as an elephant pulling a cart by Adie & Lovekin, the cart of a similar design to the well known wheelbarrow novelty box, attached to a miniature silver elephant with a small pin cushion set into its back; fine and very rare. The first example of this type we have seen

£1,800-2,000

- 127 1910 two compartment case, plain flat design with a slide out panel on either side opening to a single compartment; fine and unusual (not photographed)

£120-150



128 1910 three compartment case by Charles & Cohen, plain flat design with a heavily sprung lid at top opening to three individual compartments; fine  
£150-180



129 1910 two compartment box in the form of a foot stool by Smith & Bartlam, plain base mounted on cabriole style legs, with hinged lid at top opening to two sloped compartments; fine and rare  
£200-250



130 1910 novelty inkwell and stamp box combined in the form of a coal scuttle, plain wedged shape design with hinged lid at top opening to a small glass well and with additional sloped front hinged lid with single window opening to a single gilded sloped interior; fine and rare  
£500-600



- 131 1910 novelty inkwell and stamp case combined in the form of a Sudan chair, cubed design with a finialed hinged lid at top opening to a single glass well, the front of the base with a pull out drawer with sloped interior; fine and very rare

£1,200-1,500



- 132 1910 novelty inkwell and stamp box combined modelled as a sledge, hinged lid at top opening to twin inkwells and hinged lid at front with two windows opening to two compartments, with the skis serving as a pen rest; a very rare novelty combination, being the only example we have seen to date

£1,500-1,800

PROVENANCE:  
The "Primrose" collection, May, 2000



133 1911 single compartment case by John Rotherham (a case maker of the watch makers Rotherham & Son), pocket watch style design with purse type clasp at top, the front inscribed "Stamps", opening in half to a single compartment; fine and scarce  
£200-220



134 1911 two compartment box by Robert Pringle, plain skirted design with hinged lid at top opening two two sloped compartments; fine  
£250-280



135 1911 novelty four compartment box in the form of a two drawer chest by A & J Zimmerman, the top drawer hinged to the first with a hinged lid at top, each opening to two gilded sloped compartments; fine and rare  
£700-800



- 136 1913 inkwell and stamp box combined (maker's mark unclear), plain octagonal capstan style design, the hinged lid at top opening to a single glass well and additionally hinged, opening to a single compartment; fine and most unusual

£400-500



- 139 1914 stamp, sovereign case and purse combined, plain design the front and reverse engraved with a ribbon and garland decoration, opening in half to reveal two sovereign compartments, three stamp sleeves set into a green leather concertina'd interior; fine and attractive. A rare combination

£400-500



- 137 1913 silver and leather purse and stamp case combination by Horton & Aliday, the silver body with a finely painted enamel scene of a fox hunt at front, opening in half to a green leather interior with two stamp compartments at one side; fine and rare

£700-800



- 140 1914 stamp, cigarette and card case combined (maker's mark rubbed), plain design opening in half to reveal a separate hinged lid opening to a compartment for business cards and a single sleeve for stamps mounted on the underside; fine and scarce

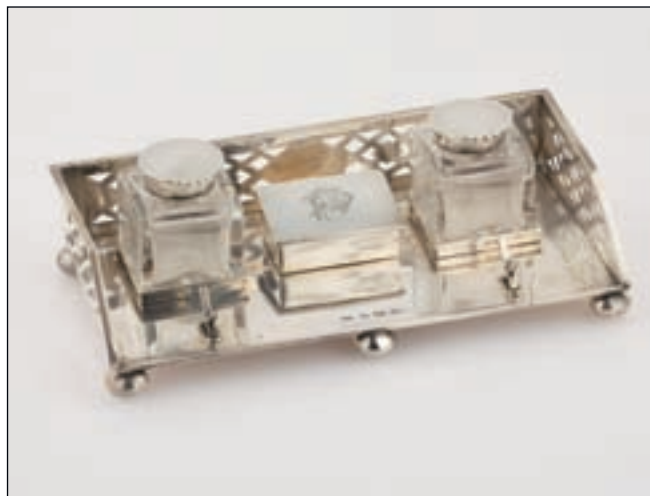
£550-600

- 138 No Lot

**AN EXTREMELY RARE SIX COMPARTMENT BOX  
BY ARTHUR & JOHN ZIMMERMAN**

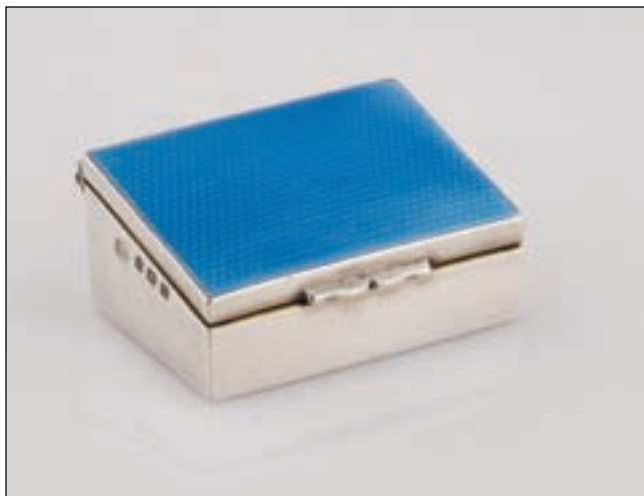


- 141 1916 six compartment novelty box modelled as a serpentine front desk by Arthur & John Zimmerman, the hinged lid at top engraved with six stamp sized squares each individually denominated ½d., 1d., 2d., 4d., 6d., and 9d., opening to six individual gilded sloped compartments; very fine and rare, and only the second example of this type we have seen  
£1,500-1,800



- 142 1919 inkstand compendium, lattice work edges on three sides surrounding two silver topped glass inkwells either side of a double compartment box, the lid initialled "PJ" with pen rest at front; fine and scarce

£800-1,000



- 144 1921 silver and enamel two compartment box probably by Asprey, plain base with a sloped font hinged lid at top finely enamelled in blue over an engine turned background, opening to two sloped compartments; fine and most attractive

£400-500



- 143 1921 aide memoir, flat design engraved with a linear pattern on front and reverse with a chain handle attached, opening in half to a grey leather interior, with two sleeves for stamps, silver pencil, celluloid plaque and compartment for cards; fine and attractive

£350-400



- 145 1923 stamp and card case combined by Smith & Bartlam, flat design with an engine turn pattern throughout, hinged lid at top with two sleeves for stamps mounted on the underside; fine and scarce

£300-350



146 1934 stamp booklet holder by Samuel Jacob & Sons, rectangular design with an engine turned pattern on front and reverse the front marked "stamps"; fine and rare

£250-300



147 A modern sloped front two compartment box, the plain base with a hinged lid at top showing two windows, opening to two sloped compartments; fine

£250-280

PROVENANCE:

The "Paris" Collection, December, 2002



**Chester Assay Office**

148 1887 stamp, sovereign and card case combined, plain design the front with small pocket watch inset and blue enamel decoration, opening in half to a single sovereign compartment and a hinged lid opening to a single stamp compartment; fine and rare. a most attractive combination

£1,200-1,500



- 149 1900 three compartment stamp box and moistener combined, plain trough design with hinged lid showing three windows opening to three concave compartments, attached to a rectangular case housing a glass reservoir mounted with a glass roller for wetting the stamps; fine and scarce  
£600-650

PROVENANCE:

The "Primrose" collection, May, 2000



- 151 1902 silver and leather sloped front single compartment box by H Matthews, the plain red leather base with a silver mounted hinged lid, opening to a single sloped compartment; fine  
£80-100



- 150 1901 stamp, vesta and photo frame combined (maker's mark unclear), the top with hinged lid having an inset striker opening to allow the fold down front to open, revealing a single sleeve for stamps and an oval photo frame; fine and unusual  
£300-350



- 152 1903 inkstand with two compartment box, plain silver base with rope effect edge standing on bun feet mounted with two silver topped cut glass inkwells either side of a two compartment stamp box; a fine and attractive piece  
£550-600



153 1903 two compartment box by William Neale, plain design mounted on a plinth style base, with a roll top lid at top opening to two sloped compartments; fine and unusual  
£200-250



155 1904 single compartment pocket case by Boots Pure Drug Company (most likely a sponsor's mark), plain design with a hinged lid at top with a single sleeve mounted on the underside; fine  
£60-80



154 1904 three compartment box by H Matthews, plain base mounted with a beaded edge, having a sloped front hinged lid with three windows showing stamps, opening to three sloped compartments; a few small holes in the beading around the base, otherwise fine and scarce  
£300-350



156 1906 single compartment pocket case (maker's mark unclear), the front and reverse engraved with an engine turned design, opening in half to a single spring loaded compartment; fine and scarce  
£120-150



157 1907 silver and leather stamp and card case by S.M. & Co, the silver body in a wedge shape design, the top engraved with a garland and wreath pattern, opening to reveal a leather interior with six individual sleeves for stamps; fine and attractive  
£200-250



158 1908 two compartment box and rocker blotter combined by Stokes & Ireland Ltd., the two compartment box mounted on the handle, with hinged lid at top opening to a removable (also hallmarked) gilded two compartment interior; fine and rare  
£550-600



159 1910 novelty two compartment case in the form of a garden trug by Saunders & Shepherd, hinged lid at either side each with a window showing a stamp opening to a single compartment; fine and rare, probably one of the most elusive of all of the novelty English silver boxes  
£1,000-1,200



160 1913 silver and glass box in the form of a book by Grey & Co, the glass base formed as the spine and pages of the book, with silver hinged lid at top inscribed "STAMPS", opening to two sloped compartments; fine and scarce

£350-380

PROVENANCE:

The "Primrose" collection, May, 2000



162 1908 stamp and card case combined, curved design heavily engraved throughout with a foliated design, the stamp compartment recess fitted into the body which pulls open to reveal the mechanism to open the card case; fine and most attractive

£380-400



**Sheffield Assay Office**

161 1904 novelty box in the form of a miniature coal scuttle by Walker & Hall, the hinged lid at front with a single window, opening to a single gilded compartment; fine and rare

£350-400



**Edinburgh Assay Office**

163 1923 two compartment box, plain base with serpentine front hinged lid at top, opening to two gilded sloped compartment; a very fine heavy quality box, and very unusual to find in Scottish silver

£250-300



**Dublin Assay Office**

- 164 1915 stamp and card case combined, plain flat design opening in half to reveal a hinged clip in one side for holding business cards the other side with three receptacles for stamps; fine and rare. Most unusual for Irish silver boxes

£400-450



**Foreign Imports**

- 165 1900 London single compartment box in the form of a cottage, the sides embossed with scenes of cherubs surrounds by floral and curlique scrolls, the hinged roof with applies spiral ornament on the peak, opening to a single sloped compartment; fine and very rare

£500-550



- 166 1896 London novelty box in the form of a horse and carriage, engraved through out with a curlique design and having green glass windows at either side the front mounted with a driver cracking a whip, the roof hinged at top opening to a concave compartment for stamps; very fine and most unusual

£1,800-2,000



167 1901 two compartment box by M.B. & Co, plain flat trough design with a spring loaded hinged lid at top, opening to two concave compartments; fine  
£120-150



168 1905c. novelty box in the form of a bureau bookcase, the bow front finely engraved with drawers, and the hinged top section opening to a single compartment (not sloped); fine and scarce  
£300-350



169 1915 silver and ivory letter opener and three compartment box combined marked W & Co, the silver box mounted at top engraved with a foliate pattern with hinged lid opening to three concave compartments; fine and very rare  
£1,200-1,500



- 170 1915 a superb silver gilt and enamel two compartment box and moistener combined, the silver gilt base mounted on bun feet with white enamel panels over an engine turned design hand painted with floral garlands, the front with a hinged lid opening to two gilded sloped compartments, with the glass roller and tray mounted behind; very fine and most attractive. A very rare example of super quality, this being the first of this type we have seen

£1,500-1,800

### AMERICAN BOXES



#### Tiffany & Co

- 171 A two compartment box marked sterling, plain base with engraved panels, the hinged lid at top engraved with a floral pattern, opening to two sloped compartments; fine and rare

£300-320



- 172 A three compartment bronze box showing the "Zodiac" pattern, the hinged lid at top opening to three concave compartments; fine and rare

£300-350



173 A sterling silver two compartment box, the base with an engraved beaded design around the edges with hinged lid at top engraved with a symmetrical pattern around the border, opening to two sloped compartments; fine and scarce

£350-400



175 A very fine ormolu three compartment "Abalone" pattern box numbered 1158, the hinged lid at top set with a circular pattern of mother of pearl pieces, opening to a removable three sloped tray for stamps; very fine and rare

£400-450



174 A fine gilded brass three compartment Venetian pattern box, casket style design finely engraved through out, the hinged lid at top opening to a removable fitted three sloped compartment; the hinged clasp missing at front, nonetheless a very fine example of this scarce pattern

£350-400



176 A sterling silver three compartment box, the spread base engraved with a foliate branch pattern around the sides, the hinged lid at top opening to three gilded sloped compartments (two single one double size); fine and attractive. Rare

£500-600

**A SUPERB 18CT. GOLD AND DIAMOND SET LAPIS-LAZULI BOX  
BY TIFFANY & CO., PARIS**



- 177 A very fine jewelled lapis-lazuli and 18ct. gold two compartment box by Tiffany & Co. Paris, the gold hinge mounted with a lapis lid surmounted with a diamond set crown, opening to a gold fitted interior with two sloped compartments; a very fine and stunning example which is undoubtedly unique

£4,000-5,000



178



179



180



181



182



183



184



185



186



187



188



189

**Silver**

- 178 A small single compartment case, flat design with the edges embossed with floral scrolls, the lift off lid at top attached by a single loop; fine  
£50-60
- 179 The Salem Witch pocket stamp case by Daniel Low, the edges engraved with curlique scrolls and the front showing an embossed witch on a broomstick, the lift of lid at top attached by a single loop; fine  
£50-60
- 180 A single compartment flat case, the front embossed with a cherub kissing a lady, the reverse embossed with flowers, the hinged lid at top opening to a single compartment; fine  
£50-60
- 181 A single compartment flat pocket case, the silver body made up of a lattice work design, containing a leather pouch with ribbon handle for removal; fine and attractive  
£50-60
- 182 Single compartment case, flat design with front engraved with a floral pattern, opening in half to a single compartment; fine  
£50-60
- 183 Single compartment flat case, the plain base with hinged lid at top showing applied foxglove flowers, opening to a single compartment; fine  
£50-80
- 184 Flat pocket strip dispenser, plain base with a hinged lid at top embossed with curlique scrolls and having a oval cut out window showing the stamps which are dispensed through a slot in the side of the lid; fine and unusual  
£60-80
- 185 Single compartment pocket case, the plain base with hinged lid at top embossed with a floral shield design, opening to a single sloped compartment with two stars cut into the slope; some minor damage, other wise fine  
£80-100
- 186 Small single compartment case, plain flat design with hinged lid at top embossed with curlique scrolls opening to a sloped front interior; fine  
£80-100
- 187 Small pocket stamp case, the front engraved with a four leaf clover, the reverse showing the postal weights and rate for letters, printed matter, single newspapers, merchandise and registration fees, the top with a single pull out compartment for stamps; fine and rare  
£80-100
- 188 Single compartment pocket case, plain base with a hinged lid at top embossed with a floral pattern, opening to a single sloped compartment with a star cut out of the slope; fine  
£80-100
- 189 Single compartment flat case, the hinged lid a top made up of embossed scroll work opening to a single sloped compartment; fine  
£80-100
- 190 Double sided two compartment box, the two hinged lids opening at opposite sides with one side showing an applied large fleur de lis, the other showing three smaller ones; fine and scarce  
£80-100
- 191 Two compartment flat case, purse style design with clasp at top the sides embossed with curlique borders and the front showing an applied winged dragon, opening in half with a single sleeve at either side; fine and scarce  
£100-120
- 192 Single compartment box, plain base with hinged lid at top embossed with a floral pattern, opening to a single gilded sloped compartment; fine  
£100-120
- 193 Novelty two compartment case in the form of a book, the cover with embossed scrolls opening in half to reveal a single compartment at either side engraved "1" and "2"; fine and scarce  
£100-120
- 194 Art Nouveau style single compartment case, plain base with a hinged lid at top bearing an applied lady's head surrounded by peony flowers opening to a single sloped front compartment; fine and most unusual  
£100-120
- 195 Novelty coil dispenser in the form of a whistle probably by A.M. Co., the plain main body with a slot in the side for dispensing the stamp by tuning the top; fine  
£120-150
- 196 Double sided two compartment pocket case, each side having a hinged lid embossed with floral scrolls, opening to a sping loaded sleeve for the stamps; fine  
£150-180
- 197 Sterling silver flat case, rectangular design embossed on front and reverse with floral and curlique scrolls, opening in half to reveal a section of waxed paper dividers to separate the stamps; fine and unusual  
£150-180
- 198 Sterling silver flat case, the front and reversed heavily embossed with floral and curlique scrolls, opening in half to a section of waxed paper dividers for the stamps; fine and unusual  
£150-180
- 199 A very fine two compartment box, heavily embossed with a floral pattern throughout the hinged lid at top opening to two gilded sloped compartments; fine and most attractive  
£150-180
- 200 Novelty coil dispenser in the form of a whistle by A.M. Co, the main body engraved in a floral pattern with a slot in the side for dispensing the stamps by turning the top; fine and scarce  
£150-180
- 201 Two compartment box, plain base with a beaded border around the foot and the rim of the hinged lid at top, opening to two sloped compartments; fine  
£180-200



190



191



192



193



194



195



196



197



198



199



200



201



202 A single compartment stamp and nib box combined, the plain base with hinged lid at top embossed with central cartouche surrounded by floral scrolls, opening to a single slope compartment and a large non sloped compartment probably for nibs; fine an most attractive

£200-220



204 Two compartment box marked Sterling by Gorham & Co., heavily embossed through out with a floral pattern, the hinged lid at top opening to two sloped compartments; fine and most attractive. Scarce

£200-220



203 Two compartment box, the plain spread base with a hinged lid at top showing applied border with curlique garlands, opening to two sloped compartments; fine

£200-220



205 Single compartment box, shield shape design design with a hinged lid at top bearing five applied shields, opening to a single sloped interior; fine and unusual

£200-220



206 Novelty coil dispenser and moistener combined in the form of a bottle, plain design with a slot in the front of the base to dispense the stamps, the neck of the bottle for holding the water, which is dispersed through the pierced lid; fine

£200-220



208 Sterling silver twin coil dispenser, plain oval design with a hinged lid at top, opening to two spindles for housing the coils, which are dispensed through the two slots at front; fine

£250-300



207 Single compartment flat case, shield design with applied crown at top, the plain base with hinged lid at top with one half showing an engraved linear pattern the other with applied clam shell and two fleur de lis opening to a single sloped gilded interior; fine and rare

£200-250



209 Sterling silver double coil dispenser, plain cylindrical design the main body mounted on a tapered foot with the lower half for dispensing the coil stamps, the smaller box hinged at top probably for dispensing Airmail labels; fine

£250-300



- 210 Three compartment box, small rectangular design, the base engraved with curlique scrolls with hinged lid at top engraved with a knight's helmet surrounded by scroll work opening to three gilded sloped compartments; fine

£250-300



- 212 Novelty pocket case in the form of an envelope, the front bearing a miniature enamelled 2c. stamp "cancelled" by a black enamel c.d.s., the reverse with a single flap opening to two compartments with a star pattern slope and bearing an "arrival" c.d.s in black enamel; a couple of minor dings in no way detracting from the fine appearance of this rare type

£300-320



- 211 Three compartment box by J.E Caldwell & Co., plain base with a spread foot, the hinged lid at top engraved dragon style floral scrolls opening to three gilded sloped compartments; fine and scarce

£280-300



- 213 Novelty single compartment case in the form of an envelope addressed to Tufnell Park London, the front bearing an enamelled 2c. stamp in red "cancelled" by a black enamel c.d.s., the flap at reverse hinged at right opening to a single compartment; fine and rare

£300-320



214 Coil dispenser and fountain pen combined by A.M. Co., the main body housing the coil dispenser which dispenses the stamps by turning the top, the fountain pen with 14ct gold nib having a silver lid; fine and rare

£300-350



216 A masonic four compartment case by H.F. & Bro, flat design the front engraved with a linear pattern and bearing an applied gold compass and rule with enamelled "G" in the centre, opening in half to reveal four separate clasps to hold the stamps; fine and rare

£300-400



215 Double stamp coil dispenser, stacked design with both sections detachable for loading the coils, the top surmounted with a boat at sea under glass; fine

£300-350



217 A fine Art Nouveau style three compartments box by W.M.B. Kerr & Co (Part of the Gorham Corporation), the plain spread base with hinged lid at top with applied peony flower design, opening to three sloped compartments; a very fine and understated box

£300-350



218 Three compartment box marked Sterling by Lebkuecher & Co, the plain base with applied floral banding, the hinged lid at top opening to three gilded sloped compartments; fine and attractive

£300-320



220 Silver and enamel stamp coil dispenser, plain base with the hinged lid finely enamelled in green over an engine turned pattern, opening to a single spindle to house the coil which dispenses through the slot at front; very fine and most attractive

£320-350



219 Silver and enamel stamp coil dispenser, plain base with the hinged lid finely enamelled in yellow over an engine turned pattern, opening to a single spindle to house the coil which dispenses through the slot at front; very fine and most attractive

£320-350



221 Silver and enamel stamp coil dispenser, plain base with the hinged lid finely enamelled in light blue over an engine turned pattern, opening to a single spindle to house the coil which dispenses through the slot at front; very fine and most attractive

£320-350



222 Circular sterling silver two compartment box by Lebolt, showing an all over hand beaten finish, with the hinged lid at top opening to two inset sloped compartments either side of a longer central compartment possibly for nibs; fine and scarce  
£350-380



224 A large three compartment box, the base decorated with a scallop and rosebud design around the edge, the hinged lid at top mounted with a Griffin and leaf garland opening to three sloped compartments; fine and unusual  
£450-500



223 Sterling silver four compartment box, the plain flat base with hinged lid at top embossed with floral scrolls opening to four gilded sloped compartments; fine and rare  
£400-450



225 A superb four compartment stamp and nib box combined by Howard & Co. New York, sloped front design with the hinged lid at top finely embossed with a floral scene, opening to four individually sloped compartments and with a larger concave compartment behind probably for nibs; very fine and most attractive. Rare  
£500-550



226 A very fine sterling silver three compartment box by Shiebler, decoratively embossed through out with a floral curlique design, standing on scalloped feet, the hinged lid at top opening to three sloped compartments; a very rare example of superb quality

£500-550



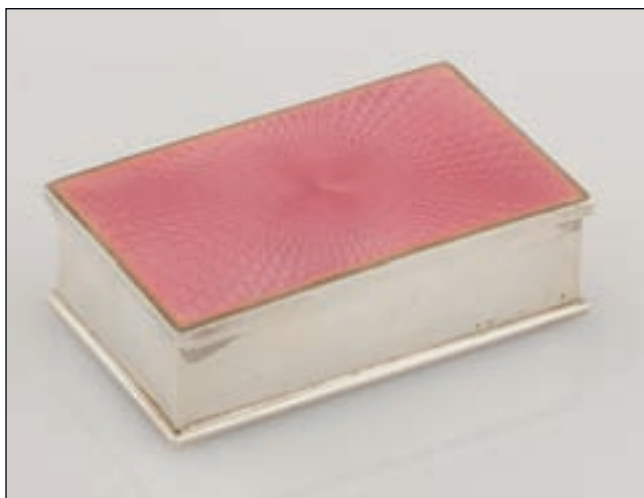
228 Dip pen, pencil and twin coil dispenser combined, contained in a fitted box, the main body with two slots for dispensing the twin coils, the dip pen and pencil housed at either end and are used by removing internally then re-inserting the silver tops back into the main body; fine and very rare

£500-600



227 A novelty single compartment case and seal combined in the form of a bed pan by Gorham, the handle at top with a blank seal, the hinged lid embossed with central shield surrounded by scroll work opening to a single compartment; fine and rare

£500-550



229 A very fine silver and enamel two compartment box probably by Gorham, the plain silver base with hinged lid at top very finely enamelled in pink over a fine engine turned pattern, opening to a gilded interior with two sloped compartments; a very rare example of superb quality

£550-600



230 Silver and green enamel desktop coil dispenser, calendar and pen holder combined marked sterling, the circular coil dispenser mounted at left of the base with hinged lid at top enamelled in green over an engine turned pattern, opening to a gilded interior and single spindle to hold the coil which is dispensed through a slot in the front, the central calendar with celluloid day and month cards in red and black, with the movable pen holder at right; very fine and most attractive. Rare

£1,200-1,500



231 A superb silver and enamel desk combination comprising coil dispenser inkwell calendar and pen holder, each piece finely enamelled in blue over an engine turned ground, the removable coil dispenser and inkwell housed either side of the central calendar and movable pen holder; very fine and most attractive. Rare

£1,200-1,500

**FRENCH BOXES**



**Metal**

- 232 Brass stamp and nib box combined by K & Co., the plain base with a spread foot mounted with a beaded design, having a hinged lid at top with the same applied beading, opening to a single sloped compartment and a larger plain compartment; fine  
£50-80

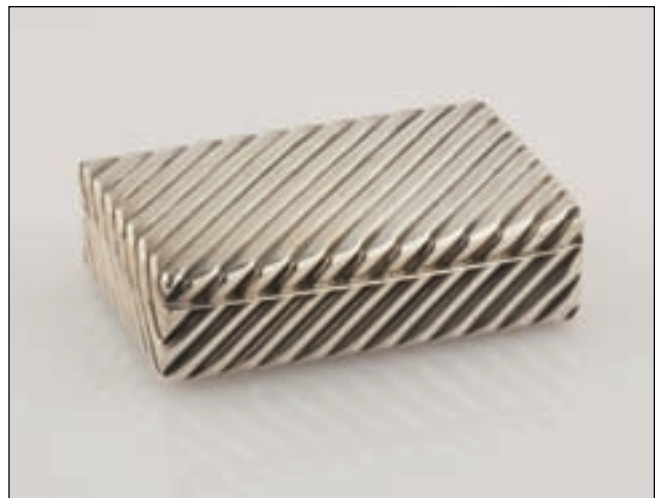


**Silver**

- 234 Sterling silver two compartment case, the plain base with an open top showing a concave compartment with central wire divider; fine and unusual  
£150-200



- 233 Brass two compartment box by Bradley & Hubbard MFG. Co., plain square design with a hinged lid at top decorated around the outside edge with black and white enameled cross banded patterns, opening to two sloped compartments; fine and attractive  
£120-150



- 235 Three compartment box with maker's mark EG, rectangular ribbed design, with the the hinged lid at top opening to three sloped compartment; fine and unusual  
£150-180



236 Sterling silver two compartment box, flat design engraved with a engine turned pattern through out, the hinged lid at top with garnet stone set thumb piece, opening to two sloped compartments; fine and attractive

£150-180



238 Two compartment box, plain base with the hinged lid at top mounted with a beaded border opening to two gilded sloped compartments; fine

£200-220



237 Silver gilt three compartment box, flat design with the sides engraved with an engine turned pattern, the hinged lid at top also engraved with an engine turn pattern surrounding a cut out circle, opening to three gilded sloped compartments; fine and scarce

£180-200



239 Silver gilt three compartment box, the flat base with engine turning around the sides with hinged lid at top engraved with a foliate border surrounding a central engine turned pattern, with cabochon ruby thumb piece at front opening to three sloped compartments; fine and most attractive. Rare

£300-350



240 Stamp and note pad holder combined by Kendall - Paris, plain design with a hinged lid at top opening to a single large sloped compartment; fine and unusual

£300-320



242 A fine silver gilt three compartment box marked Keller, the plain base with a cross banded design around the lower edge, with a hinged lid at top bearing the same design and a bevelled glass window, opening to three gilded sloped compartments; slight wear to the gilding, otherwise fine and rare

£350-400



241 Two compartment box, flat design the sides impressed with curliques scrolls and garlands, with hinged lid at top impressed with floral garlands, opening to two sloped compartments; fine and most attractive

£300-350



243 Three compartment box, serpentine front base embossed with floral garlands, with hinged lid at top opening to three sloped compartments; fine and most attractive

£350-400



244 Three compartment box by E. Lenoir, Paris, flat design with the sides and hinged lid engraved with an engine turned design, the lid at top opening to three sloped compartments; the stone missing from the thumb piece of the hinged lid, otherwise fine and attractive. Rare

£350-400



246 Silver and glass two compartment box and inkwell combined, the plain glass base with a symmetrical pattern cut into the underside the top front mounted with a silver collar and hinged lid opening to two sloped compartments and the back with a smaller silver collar and hinged lid opening to a single well; fine and attractive

£450-500



245 Three compartment stamp and nib box combined by Appay Paris, plain base with hinged lid at top with patterned edge opening to three gilded sloped compartments and a larger concave compartment; fine

£350-400



247 A fine silver gilt and glass two compartment stamp box and moistener combined marked Ascanio RB, the glass base mounted with a silver banding around the edge, the top with a silver collar surrounding the glass roller for moistening the stamps, opposite a silver hinge mounted with a glass lid (the edges ground down) opening to two glass sloped compartments; fine and very scarce

£500-550



- 248 A very fine three compartment box by C. Keller, the plain base with three individually hinged lids at top, each finely enamelled with the values of the stamp stored in its compartment “5” in green, “15” in orange and “25” in blue each opening to a single sloped compartment; fine and most attractive. A rare example being the first of the this type we have seen

£1,200-1,500



- 249 A very fine silver gilt two compartment stamp and nib box combined by Bointaburet A. Paris, rectangular design with the base engraved with an engine turned design the hinged lid at top split into two with a diamond shaped Wedgwood plaque at either side of a foliate wreath, the larger lid opening to two sloped compartments, with the smaller opening to a single compartment possibly for nibs; very fine and of exceptional quality. Rare

£1,200-1,500



- 250 A very fine three compartment stamp and nib box combined, the plain base weighted to act as a paperweight, the hinged lid at top with an oval glazed window surrounded by an engine turned pattern, showing a hand painted scene of a golfer and his caddy, opening to three sloped compartments at front and two larger compartments behind; a very fine box of exceptional quality. Very rare, this being the first example we have seen

£1,500-1,800



- 251 A very fine six compartment box and moistener combined maker's mark LD, circular design heavily engraved with an engine turned pattern surrounded by floral scrolls, the hinged lid at top opening to six individual gilded sloped compartments surrounding a circular central compartment for the moistening sponge; fine and most attractive. very rare being only the second example of this type we have seen, the other having a central sovereign dispenser sold by Spink in 2004

£1,800-2,000



- 252 A very fine novelty stamp and card case in the form of a carriage, intricately engraved all over with a floral and curlique design, with shields on either side mounted under the blue glass windows, the hinged roof at top opening to a sleeve on the underside for cards and a concave compartment for stamps; a most attractive example of very high quality  
£1,800-2,000



- 253 A superb silver gilt and guilloche enamel three compartment box retailed by Escalier de Cristal, Paris, contained in its original silk and velvet lined fitted leather presentation box, finely engraved with an engine turned design the hinged lid at top very finely enamelled in blue over a gold and engine turned pattern, with cabochon ruby set thumb piece opening to three sloped compartments; a very fine and rare box of superb quality  
£1,800-2,000

**AN EXTREMELY RARE THREE COMPARTMENT  
BOX OF SUPERB QUALITY**



- 254 Silver gilt three compartment box by Bointaburet A. Paris, flat design with engine turning around the sides, the top with applied plaque inset showing engine turning and garlands surrounding a central medallion, opening to three gilded sloped compartments; very fine and rare

£2,000-2,500



**Metal**

- 255 1860c. gilded brass single compartment case, mounted on a skirted style base, with engraved patterns at sides, the hinged lid at top showing similar decoration and a single window showing a stamp, opening to a large single compartment; fine and scarce

£300-350



- 257 1860c. gilded brass two compartment box, rectangular design, the side engraved with curlique scrolls, with hinged lid at top engraved with a similar pattern and having two windows showing stamps, opening to two compartments; fine and rare

£350-400



- 256 1860c. gilded brass and malachite single compartment box, cubed design with five sides mounted with green malachite panels (one being the hinged lid) and a single panel with a window showing a stamp; some minor damage to the panels, though not affecting the fine appearance

£350-400



- 258 1860c. ormolu six compartment box, cube design with each side having a raised compartment with hinged lid and window showing a stamp, opening to a single compartment; fine and very rare

£800-1,000



259 1880c. silver plated two compartment box, the plain base with hinged lid at top showing central engraved portrait of a lady reading a book entitled "L'ETUDE", opening to two sloped compartments; some slight wear to the plating as usual, otherwise fine

£80-100



261 1880c. single compartment gilded brass box, the sides finely engraved with scroll work, the hinged lid at top with a single window showing a stamp opening to a single compartment; fine and scarce

£200-220



260 1880c. silver plated three compartment box signed B. Wicker GR., the sides with impressed panels showing curlique scrolls, the hinged lid at top with a circular central panel depicting an engraved portrait by G Guzzardi entitled "LA NOTE DIFFICILE" with impressed panels either side, opening to three sloped compartments; fine

£100-120



262 1890c. three compartment double sided brass box, the plain base with a hinged lid on either side, one plain on the underside opening to a large single sloped compartment, the other at top with applied garlands, opening to two sloped compartments; fine and attractive

£50-60



263 1890c. five compartment silver plated box by the Musee Du Louvre, the hinged lid at top finely engraved with a replica of a painting entitled "LA FETE AU VILLAGE" signed Teniers P., opening to five gilded sloped compartments; some wear to the plating, otherwise fine and rare in this five compartment format

£150-180



265 1890c. sloped front brass two compartment box, the base and lid showing a blackened pattina, the base having an applied brass design of two dragons drinking from a fountain, the sloped front hinged lid at top with applied wreath and ribbon; fine and scarce

£200-220



264 1890c. a very fine gilded brass three compartment box in the form of a console table, standing on three tapered legs the entire box heavily decorated with applied and pierced patterns, the hinged lid at top opening to three sloped compartments; very fine and most attractive

£150-180



266 1890c. a superb gilded bronze and glass two compartment box, the glass base having a fitted bronze collar at top with applied garlands hanging around the edges and a hinged lid at top opening to a removable double sloped interior engraved with a floral pattern; fine and most attractive

£250-300



267 1890c. a fine bronze mounted on glass two compartment box, the glass base with a star pattern cut into the underside and surmounted with a decorative bronze collar around the edge, the hinged lid at top showing an urn surrounded by floral scrolls and garlands, opening to two glass sloped compartments; fine and most attractive  
£350-400



269 1900c. a gilded brass and champleve enamel two compartment box, standing on four bun feet, the sides of the base enamelled with colourful panels, having a hinged lid at top similarly decorated opening to two sloped compartments; fine  
£100-120



268 1900c. three compartment silver plated box, the plain base with a hinged lid at top finely engraved with a replica of a painting entitled "LA MUSETTE", opening to three gilded sloped compartments; fine and most attractive  
£100-120



270 1900c. three compartment sloped front box, the base engraved with floral panels on all sides, the hinged lid at top finely engraved with a scene entitled "NICE. LA JETÉE PROMENADE", opening to three sloped compartments; slight wear to the plating on the lid as normal, otherwise fine  
£150-180



271 1907 two compartment cast iron box signed "J.P. PARIS/DEPOSE", the top with a crenellated design and hinged lid inscribed "TIMBRES, PLUMES", opening to two sloped compartments; fine and rare  
£120-150



273 A modern two compartment silver plated souvenir box, the base with a hammered finish, having a hinged lid at top engraved with a replica of a painting entitled "TENIERS - KERMESSE FLAMANDE", opening to a removable two slope compartment; fine

£60-80



272 1920c. a glass and gilded brass three compartment box, the plain glass base with a symmetrical pattern cut into the underside and having a brass collar at top with applied flower pattern draping over the sides and applied to the hinged lid at top, opening to three glass sloped compartments; a fine and most attractive example. Scarce

£80-100



274 A silver plated four compartment box, the plain base with hinged lid at top finely engraved with two scenes entitled "LA LECTURE" and "LA LECON DE MUSIQUE", opening to four gilded sloped compartments; slight wear to the plating at top, otherwise fine

£100-120



275 A cast bronze three compartment box, casket form decorated with floral garlands signed "Guenardeau", the hinged lid at top opening to three leather lined sloped compartments; fine and rare

£120-150



**Wood**

277 A souvenir single compartment case in the form of a lectern from Nice (France), the front of the base with painted "Nice" in black italics, the front with inlaid scene of a gentleman hiking and the sloped front top with a single spring loaded dispenser; fine

£40-50



276 A gilded bronze and cloisonne enamel two compartment box, the plain base with a foliate border and hinged lid at top enamelled with a floral pattern, opening to a removable two sloped section; fine

£60-80



278 A fine rosewood veneered two compartment box, the base with push button catch inset to open the hinged lid at top having a brass banding around the edge, opening to two sloped compartments; a stylish and desirable example

£60-80



279 A novelty single compartment olive wood box in the form of a cockerel's head, set with an amber eye, the head opening in half to a single sloped compartment; fine

£100-120



281 A walnut veneered three compartment box, the base with a brass push button catch set into the front to open the hinged lid at top, inlaid with a mother of pearl border and central brass cartouche opening to three (one missing) sloped compartments; fine and most attractive

£150-200



280 A fine ebonised rosewood two compartment box, plain square design, the hinged lid at top with bronze banding around the edge and inlaid into the top with a central brass cartouche, opening to two polished wood sloped compartments and a larger sloped compartment; very slight cracking to the veneer on the lid, otherwise fine and most attractive

£100-120



282 A mahogany three compartment box, the base with a fancy bronze scroll pattern applied round the base with the hinged lid at top also with an applied border and central Sphinx, opening to three sloped compartments; fine and most attractive

£200-220



283 A mahogany two compartment box, the serpentine front base with an applied bronze beading, the hinged lid at top also with an applied bronze banding and central garlands opening to two sloped compartments; fine and most attractive  
£200-250



**Other Material**  
285 A fine leather three compartment box retailed by "ISAKOF/34. PASSAGE DES PRINCES 34.", the brown leather imprinted with a woven design, the hinged lid at top opening to three spring loaded leather compartments. *Scarce*  
£100-120



284 1890c. A superb quality rosewood three compartment box, the hinged lid at top with applied bronze border with central ribbon mounted garland, opening to three polished wooden slopes and revealing the fine gilded hinge and locking clasp; a fine and most attractive example  
£250-300



286 A fine leather three compartment box, the base with green and gold tooling around the base and the hinged lid at top also with green and gold tooling and showing central circular coin design finely engraved with a picture entitled "JEUNE FILLE/EFFEUILLANT UNE FLEUR" signed "D'APRES GREUZE", opening to three leather sloped compartments; a most attractive example  
£100-120



287 1890c. two compartment blonde tortoiseshell box, standing on four bone turned feet, the hinged lid at top opening to two sloped compartments; fine and most attractive

£280-300



288 1930c. a black bakerlite ten compartment box, the lift off lid at top engraved "TIMBRES" over an engine turned ground and showing a transferred Plane, Boat and Train marked "POSTES", opening to six single slopes and four double sized slopes surrounding a central compartment most probably for a moistening sponge; fine and very rare

£300-350

PROVENANCE:

The "Paris" collection, December 2002



289 1890c. a fine purple glass and gilded brass two compartment box, the plain purple glass base mounted with a gilded brass collar with applied hanging gilded floral garlands, the hinged lid at top with applied floral garland opening to a removable gilded brass two sloped section; fine and most attractive

£320-350

### AN EXQUISITE BOX BY BACCARAT



#### Glass

- 290 A superb two compartment box attributed to Baccarat, the plain glass base mounted with a silver gilt collar and hinge mounted with a glass lid finely engraved with and opaque scene of a bird and butterfly sitting amongst mushrooms and reeds, opening to two sloped compartments; very fine and most attractive. very rare being only the second example we have seen

£1,000-1,200

### GERMAN BOXES



#### Silver

- 291 1900c. single compartment case, plain base with a hinged lid at top engraved with a floral pattern and surmounted with five gold plated crosses of Lorraine and central coat of arms, opening to a single sloped compartment; fine and most unusual

£80-100



- 292 1910c. sterling silver (marked 800) three compartment box, plain base with hinged lid at top showing embossed central wreath and garland, opening to three sloped compartments; fine

£200-250



- 293 1890c. single compartment box, square design the base embossed with curlique scrolls, the hinged lid at top embossed with a couple dancing opening to a single compartment; fine

£250-300



- 294 1920c. a very fine silver and enamel three compartment box marked 900, finely engraved with a woven effect pattern through out, the hinged lid at top with a blue enamel banding around the top and inside the oval central cartouche, opening to three gilded sloped compartments; a very fine example of superb quality. Rare

£400-420



- 295 1885c. a fine sterling silver marked 800 single compartment box, plain base with a hinged lid at top bearing a finely enamelled replica of the Malta 1885-90 2½d. blue stamp, opening to a single sloped compartment; very rare

£1,200-1,500



296 A large novelty box in the form of a horse and carriage marked 925, the roof of the carriage opening to a large compartment probably for an inkwell, the drivers seat opening to a concave compartment; fine and unusual

£1,500-1,800



297 1890c. novelty desk top box in the form of a table marked 800, mounted on decorative cabriole style legs, the sides of the base embossed with various scenes, having a hinged lid at top with a centrally embossed scene surrounded by floral and curlique scrolls, opening to a single sloped compartment for stamps and three other larger non sloped compartments; a very fine, rare and most attractive piece

£1,800-2,000



**Metal**

298 1920c. a brass three compartment stamp box and letter rack combined marked "AUSTRIA", the front mounted with a hinged lid opening to three sloped compartments, the back with graduating sized collapsable letter compartments; fine

£120-150

300 A very fine four compartment box by W.M.F, the skirted style base made up of pierced curlique scrolls, the hinged lid at top opening to four individually sloped compartments; a most attractive example of superb quality. Rare

£150-180



299 1920c. a four compartment box by W.M.F. pattern number 102A, plain design with the hinged at top opening to four sloped compartments; fine

£150-180



301 1920c. a W.M.F style four compartment box marked W.E.P. CO., the skirted base with a hinged lid at top opening to four individually sloped compartments; fine and rare

£150-180



302 1920c. a fine W.M.F. chrome plated four compartment box, square design with a hinged lid at top opening to four sloped compartments set two plus two; a rare example  
£150-180



304 1920c. chromium plated W.M.F. four compartment box (no. 38), the spread base with raised floral pattern at front, the hinged lid at top opening to four individually sloped compartments; fine and most attractive. Scarce  
£150-180



303 1920c. a W.M.F. four compartment box, the skirted spread base with a linear and foliate pattern, the hinged lid at top opening to four individually sloped compartments; fine and scarce  
£150-180



305 1886c. brass three compartment box and moistener combined in the form of a cash register by Adolf Frankau, the glass roller mounted at front with a hinged lid above opening to three sloped compartments; fine and rare  
£200-250



306 1920c. four compartment stamp box and letter scale combined possibly by W.M.F. (not marked), the skirted base with a single arm pendulum scale mounted at the back, the hinged lid at front showing a floral decoration, opening to four sloped compartments; fine and rare

£200-250



307 1920c.a fine W.M.F three compartment box, the plain base with a spread foot, having a hinged lid at top set with a bevelled glass window, opening to three sloped compartments; scarce

£250-300



308 a single compartment Vienna bronze box modelled as a wooden crate, the hinged lid at top mounted with a pug dog looking down at a mouse running into a hole in the crate, opening to a single sloped compartment; fine and very rare, the first example of this type we have seen to date

£1,000-1,200



- 309 1930c. a very fine novelty two compartment box modelled as a car, the main body chrome plated, with spoked wheels and rubber tyres the hinged engine cover at back opening to two sloped compartments; a very rare example being the first we have seen

£1,500-1,800

### DUTCH BOXES



#### Silver

- 310 1900c. two compartment sterling silver box, heavily embossed with floral and curlique scrolls the front hinged aswell as the lid at top with both opening to access the two non sloped compartments; fine and unusual

£80-100



- 311 1890c. small two compartment box, having a hinged lid at opposite sides, one embossed with a windmill the other with a boat, each opening to a single sloped compartment; fine

£120-150



- 312 1890c. a small two compartment pocket case, having a hinged lid on opposite sides each embossed with a different rural scene featuring the same couple and opening to a single sloped compartment; fine

£200-220



- 314 1890c. three compartment box, the plain base with a hinged lid at top embossed with a bar scene, opening to three sloped compartments; fine

£300-350



- 313 1890c. single compartment box, cubed design with the foot of the box and the hinged lid at top each embossed with different scenes of a gentleman, the lid opening to a single sloped compartment; fine

£200-250



- 315 1890c, three compartment box, mounted on a gadrooned edged tray and embossed with a curliques design, the hinged lid at top opening to three sloped compartments; fine and most attractive

£300-350



316 1905c. three compartment box, the base embossed with scroll work and standing on paw feet, the hinged lid at top embossed with a high relief scene of sailors on board a ship, opening to three sloped compartments; fine and rare

£500-550



317 1890c. a novelty single compartment box in the form of a cello, the front showing embossed curlique scrolls with figures sitting in between, the body opening in half to reveal a single sleeve for stamps; fine and very rare, being the only example we have seen to date

£800-1,000



318 1905c. novelty two compartment box in the form of a drop leaf table, the flaps of the table and hinged lid embossed with musical scenes, the lid hinged at side opening to two sloped compartments; fine and very rare

£1,000-1,200



- 319 1890c. novelty single compartment case in the form of a grandfather clock, the body of the clock embossed through out with various scenes, the central column with an oval hole to see the pendulum, the face having movable hands, the back of the clock face removable opening to a single sleeve for stamps; very fine and rare being the only known example to date

£1,000-1,200



- 321 1905c. novelty two compartment box in the form of a bureau bookcase, embossed with various scenes of cherubs playing and reaping the crops etc., the two doors at top opening to reveal a single sleeve for stamps on the reverse of each, the back with a larger removable compartment possibly for nibs etc.; fine and very rare

£1,200-1,500



- 320 1905c. novelty single compartment box in the form of a Sudan chair, embossed throughout with floral and curlique scrolls, the hinged door at front with a single glazed window at front opening to a single sleeve for stamps on the reverse; fine and very rare

£1,200-1,500

**RUSSIAN BOXES**



322 1899 three compartment box maker's mark P.J.S, plain base mounted on bun feet with three individually hinged lids at top engraved "7", "5" & "3" (kopek), each opening to a single sloped compartment; fine and rare

£600-700



323 1901c. a very fine silver gilt four compartment box, rectangular design and engraved throughout with a very fine engine turned design, the hinged lid at top opening to four gilded sloped compartments; very fine and of exceptional quality

£600-800



324 1894 Moscow silver and cloisonne enamel box by Gustav Klingert, square design mounted on a spread foot, finely enamelled in various shades of blue, red and white, the hinged lid at top opening to a single sloped compartment; a few very minor chips in no way detracting from the very fine appearance. Very rare

£2,500-3,000

PROVENANCE:  
Ex Davis  
The "Primrose" collection, May 2000

**A SUPERB AND EXTREMELY RARE BOX BY FABERGÉ**

**EX MR AND MRS FRANK SINATRA**



325 1899 Moscow, a superb jewelled silver gilt and guilloché enamel stamp box by Fabergé with imperial warrant for 1899-1908, rectangular design the hinged lid at top centring a laurel wreath with a cabochon sapphire join against a silver-gilt field, the corners with cabochon sapphire mounted rosettes enclosing two pink guilloché enamelled panels, opening to reveal a removable fitted three sloped compartment for stamps; very fine and undoubtedly unique. A rare opportunity to acquire a fantastic box of exhibition quality

£35,000-40,000

PROVENANCE:

Sotheby Parke-Bernet, May 1973

Mr & Mrs Frank Sinatra Christies New York, December 1995

EXHIBITED:

A la Vielle Russie, New York, 25th October to 7th November 1961





326 1890c. single compartment cloisonné enamel box, the base and hinged lid colourfully enamelled between a finely shaped rope border, opening to a single sloped compartment; some enamel work missing; otherwise attractive

£80-100



328 A very fine lacquered papier mache three compartment box, the plain black base with hinged lid at top fine painted with a scene of a three horse drawn troika, opening to a red laquer three sloped compartment interior; very fine condition and rare

£500-600



**Other Material**

327 A very fine lacquered papier mache two compartment box with marks for the lutukin factory, the plain black base with hinged lid at top painted with a husband and wife scene, opening to a fine red laquered interior with two sloped compartments; very fine. Rare with this type of scene as most were painted with triokas

£350-400



329 1890c. a very fine bronze and green malachite two compartment box, mounted on four gilded bun feet the malachite base with a bronze banding around the edge showing a Greek key design, the top with two individually hinged bronze lids with windows showing stamps, opening to two sloped compartments; fine and very rare

£1,200-1,500

**IVORY BOXES**



330 1910c. two compartment box, plain base with hinged lid at top showing a lady walking along a sea front, opening to two sloped compartments; fine

£100-120



332 1900c. three compartment box marked C.H.H Depose, plain flat design with a hinged lid at top opening to three sloped compartments; fine and scarce

£250-300

333 A selection of four ivory/plastic boxes, including a three compartment case with beaded design around the top and slide out lid, a two compartment case with a similar design, the slide out lid showing a carved floral pattern and two single compartment boxes; fine and scarce (not illustrated)



331 1901c. two compartment box, plain design the hinged lid at top inlaid with a circular plaque depicting and embossed cherub, opening to two sloped compartments; fine and attractive

£250-300



334 1890c. two compartment box, plain design with hinged lid at top bearing the initial "W" surrounded by garlands in blue, opening to two sloped compartments; fine and attractive

£250-300



£350-400

- 335 A fine four compartment box, plain rectangular design with spring loaded thumb piece at front opening the hinged lid at top bearing the initials "A C" in blue, opening to four sloped compartments set two and two; a couple of minor splits, not detracting from the fine appearance. Rare

£400-500



- 337 1905c. three compartment box, plain base with a silver and blue enamel border around the hinged lid at top also set with a silver, enamel and paste set central design in the centre of the lid, opening to three individually sloped compartments; fine and rare

£700-800



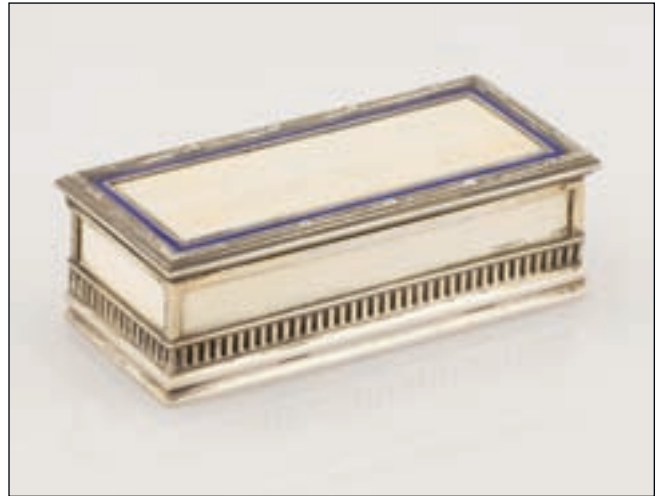
- 336 1890c. hand painted two compartment box, the base painted with floral garlands and the hinged lid at top painted with two lovers sitting under a tree, with the gentleman playing a lute the lady reading music, opening to two sloped compartments; some minor flaking around the edges of the lid, otherwise fine and most attractive

£600-700



338 1890c. three compartment box, the top and sides inlaid with a silver beading the hinged lid additionally surmounted with a mother of pearl plaque engraved with a bird and flowers, and with painted garlands at left and right; fine and most attractive

£700-800



340 1890c. silver and ivory three compartment box marked G.A.S, the silver frame with lattice work base inset with the ivory carcass, the hinged lid at top inset with an ivory panel surrounded by blue enamel band, opening to three sloped compartments; very fine and rare being the first of this type we have seen

£800-1,000



339 1890c. three compartment box, the base finely inlaid with silver beading the hinged lid at top inlaid with silver beading and an arrow quiver surrounded by a floral pattern, opening to three sloped compartments (one slope missing); fine and most attractive

£800-900



341



342



343



344



345



346



347



348



349



350



351



352

**METAL BOXES**

- 341 A single compartment sloped front box, the hinged lid at top embossed with an angels head, opening to a single sloped compartment; fine  
£30-40
- 342 1874c. small flat case probably by Avery, the front embossed with Queen Victoria's bust and "STAMP CASE REGD. OCT.19. 1874", the open back with a single clasp to hold the holds; a good example of this very early type  
£50-60
- 343 1920c. double sided two compartment box, the two hinged lids at opposite sides embossed with frogs, each opening to a single sloped compartment; one lid with some excess solder, otherwise fine  
£50-60
- 344 A silver plated on brass two compartment box, mounted on four ball feet the base and hinged lid heavily embossed with floral and curlique scrolls, the hinged lid at top opening to two sloped compartments; some wear to the plating otherwise fine  
£50-60
- 345 A silver plated three compartment box, the plain base with hinged lid at top embossed with floral and foliate border, opening to three sloped compartments and a larger compartment probably for nibs  
£50-60
- 346 A silver plated two compartment box, the plain base with a spread foot having a hinged lid at top with centrally applied sword and crown flanked by two fleur de lis, opening to two sloped compartments; fine  
£50-60
- 347 A single compartment brass box, the base and hinged lid at top with applied fruit baskets, opening to a single sloped compartment; fine  
£50-60
- 348 A novelty brass two compartment box and nib whipe combined in the form of a book, the spine and front of the "page" side mounted with bristles, the leather covered hinged lid at top opening to two gilded sloped compartments; fine and unusual  
£50-80
- 349 A gilded brass and champleve enamel two compartment box, the base and the hinged lid enamelled with floral scrolls, opening to two sloped compartments; also another two compartment box in a similar design; *with some faults; fine*  
£60-80
- 350 A brass two compartment box, the plain base mounted with a large circular handle and hinged lid at top showing applied leaf, opening to two sloped compartments; fine  
£70-90
- 351 1880c. a fine two compartment box, the spread skirted base with a hinged lid at top mounted with a handle, opening to two sloped compartments; fine  
£70-90
- 352 A silver plated two compartment box, the skirted base engraved with a floral pattern, the hinged lid at top showing two dogs playing under a tree opening to two sloped compartments; fine and attractive  
£70-90
- 353 A chrome plated on brass three compartment box, rectangular form with a spread base having a hinged lid at top mounted with a bevelled glass panel, opening to three gilded concave compartments; fine  
£80-100
- 354 A tin three compartment box, the painted black base with a hinged lid at top showing a faux tortoiseshell panel, opening to three sloped compartments; fine  
£80-100
- 355 A brass three compartment box, the base cast with a log effect design, the hinged lid at top showing the same pattern and surmounted with two rabbits, opening to three brass sloped compartments; also another box in the same design for vests; *fine*  
£80-100
- 356 A brass three compartment box, the base and hinged lid at top impressed with a woven wicker design, the lid at top with applied mice in Karate outfits, opening to three sloped compartments; fine  
£80-100
- 357 A brass three compartment box in the form of a chest, the base impressed with curlique scrolls, the hinged lid at top surmounted with a brass cat opening to three sloped compartments; fine  
£80-100
- 358 A novelty brass three compartment box in the form of a book, the "binding" profusely decorated with various patterns and incorporating the hinged lid opening to three sloped compartments; fine and most unusual  
£100-120
- 359 A fine quality two compartment brass box, the plinth style base standing on four ball feet, with a hinged lid at top opening to two sloped compartments; unusual so fine  
£100-120
- 360 A brass three compartment box, the rectangular base and hinged lid at top, showing various applied bird and foliate patterns, opening to three sloped compartments; fine  
£100-120
- 361 1890c. single compartment box, plain trough design standing on four ball feet, the hinged lid at top surmounted with a chick with a purple egg shaped stone set into its back; fine and attractive  
£100-120
- 362 A brass three compartment stamp and nib box combined marked Ges. Gesch., plain base with the hinged lid at top inlayed with silver flowers, opening to three sloped compartments and a large compartment possibly for nibs; fine and attractive  
£100-120
- 363 1930c. a chrome plated three compartment stamp box and letter scale combined, both mounted on a spread base the bow fronted scale at left the box at right with a hinged lid at top set with a bevelled glass panel opening to three sloped compartments; slight damage to the glass lid, otherwise fine and scarce  
£100-120
- 364 Another box marked Ges. Gesch. the lid at top showing enamelled mistletoe; fine  
£100-120
- 365 1920c. glass and brass three compartment box, the plain base with a symmetrical pattern cut into the underside, having a brass collar at top with a hinged lid mounted with red stones, opening to three glass sloped compartments; fine  
£100-120



353



354



355



356



357



358



359



360



361



362



364



365

- 366 A fine gilded brass single compartment box, the plain pedestal style base surmounted with a gilded horseshoe, covering a single spring loaded compartment; slight wear to the gilding, otherwise fine and very rare  
£100-120
- 367 A Chinese cloisonne enamel single compartment box, the skirted base decorated with painted flowers and symmetrical patterns, having a hinged lid at top opening to a green enamelled single sloped compartment; fine and attractive  
£100-120
- 368 A gilded bronze and green vaseline glass four compartment box, the cast base incorporating four scrolled legs, the hinged lid at top set with the glass panel in a floral design opening to four sloped compartments; fine  
£100-120
- 369 A silver plated two compartment box, the plain base with a spread foot, having a hinged lid at top embossed with foliate scrolls around a central circular icon opening to two sloped compartments; fine  
£100-120
- 370 A copper Art Nouveau four compartment box, plain square design, the hinged lid at top showing an embossed pattern opening to four individually sloped compartments; fine and attractive  
£100-120
- 371 A Chinese bronze enamelled single compartment box, small square design with painted base and hinged lid depicting a bird and flowers, opening to a painted light blue single sloped compartment; fine  
£100-120
- 372 A chrome plated three compartment case, plain rectangular design with the hinged lid at top very finely engraved with an almost transfer like scene of a chateau with a boat on a lake at front signed A-Gor, opening to three individually sloped compartments; most attractive  
£120-150
- 373 1920c. a novelty silver plated three compartment box in the form of a table, the base mounted on spindled legs, with the hinged top showing applied coronet and clovers around the edges and floral design in the centre, opening to three sloped compartments; fine and rare  
£120-150
- 374 A very fine two compartment cast bronze box modelled as a seated dog, the whole body hinged to a flat base opening to two sloped compartments.  
*Rare*  
£120-150
- 375 1908 a brass two compartment box and letter clip combined, the box mounted on a glass base (not original) by a spring loaded catch, the hinged lid at top surmounted with a hallmarked silver script "Stamps" (London 1908), opening to two sloped compartments; fine  
£120-150
- 376 A brass novelty single compartment box modelled as an eagle's head holding an egg in its beak, the head hinged to a flat base opening to a single sloped compartment; fine  
£120-150
- 377 A fine bronze and enamel two compartment box, rectangular design mounted on four ball feet, the base with blue painted enamelled panels showing a floral design along with the hinged lid at top opening to two concave compartments; fine and scarce  
£120-150
- 378 A Chinese painted bronze two compartment box, the skirted base and hinged lid at top painted with a floral and swirled pattern, opening to two gilded sloped compartments; fine  
£120-150
- 379 A chrome plated (worn) novelty two compartment box in the form of a basket, the base surmounted with floral garlands, the top having two hinged lids either side of the handle each opening to single sloped compartments; fine and unusual  
£120-150
- 380 A Chinese enamelled single compartment box, the skirted base and hinged lid enamelled in turquoise over a finely enamelled ground additionally painted with birds and flowers; fine and most attractive  
£120-150
- 381 A Chinese enamelled two compartment box, the skirted base and hinged lid painted with a floral and butterfly pattern, the lid opening to two painted green sloped compartments; fine  
£120-150
- 382 1920c. chrome plated four compartment box, each side having two individually hinged lids set with blue agate opening to a single sloped compartment; also a brass box set with the same colour stone not for stamps; very fine  
£150-180
- 383 1920c. an ormolu covered three compartment box, standing on four ball feet, the top with three individually hinged lids each set with a glittery agate stone opening to a single sloped compartment; fine and unusual  
£150-180
- 384 1890c. a brass two compartment case and letter opener combined, the handle having a hinged lid with applied snails and a floral pattern, opening to two sloped compartments set one plus one, the blade engraved with insects; fine and rare  
£150-180
- 385 A novelty brass two compartment box in the form of a book, the hinged front cover with applied hand painted porcelain plaque depicting two lovers, opening to two sloped compartments; fine and attractive. Scarce  
£150-180
- 386 A copper two compartment box, plain oval design with the front showing an applied silver scroll pattern, the hinged lid at top showing a similar design, opening to two sloped compartments; fine and unusual  
£150-180
- 387 A novelty bronze single compartment box in the form of a terrier's head, hinged to a flat base opening to a single compartment; fine and scarce  
£150-180
- 388 A bronze single compartment box in the form of a bag hanging from a dog's mouth, the two pieces mounted on a marble base, the bag with hinged lid at top opening to a single sloped compartment  
£150-200



366



367



368



369



370



371



372



373



374



375



376



377



378



379



380



Ex 382



Ex 382



383



384



385



386



387



388



389 A novelty brass two compartment box in the form of a sledge, the main body engraved with a woven style pattern, the hinged lid at top with applied painted bronze flower opening to two sloped compartments; fine and unusual

£150-200



391 A brass inkwell and stamp box combined, the box design with a ribbed pattern around the base and having a hinged lid at top embossed with a curlique and ribbed pattern, opening to a single glass well and internal hinged lid opening to a single sloped compartment; fine and scarce

£200-220



390 1940c. silver plated rocker blotter, plain shaped design with two hinged lids at top either side of the central handle with each opening to a single concave compartment; fine

£200-220



392 A novelty two compartment box in the form of a book press, mounted on a marble base the book with two hinged lids decorated with champleve enamel, opening to two sloped compartments; fine and unusual

£200-220



- 393 1890c. Italian gilded brass three compartment box, standing on decorative feet, the base impressed with a floral banding, the hinged lid at top set with a marble panel surmounted with a gilded cherub sitting with two doves above, opening to three individually sloped compartments; fine and most attractive. Rare

£200-220



- 395 A brass three compartment stamp, nib box and pen holder combined, the brass body standing on four bun feet with a wooden drawer at front opening to three sloped compartments for stamps and larger compartment for nibs, the top with a hand painted signed watercolour scene under glass of a fox hunt gathered outside a manor house, and also mounted with a rack for three pens; fine and most attractive

£200-250



- 394 1889c. English silver plated combination stamp, vesta, card and cigarette case by Bunn & Mason, flat design stamped with swirling flutes, double hinged with one compartment opening to two sleeves for stamps and an additional fold down flap for vestas, the other side opening to an aide memoir, propelling pencil, cigarette and card compartment; fine and rare

£200-220



- 396 A silver plated and glass three compartment box, the plain glass base with a silver collar and hinged lid, having a glass panel inset housing an engraved silver plated scene of a dog; fine and unusual

£200-250



397 A silver plated three compartment stamp, nib box and rocker blotter combined, the top mounted with a large handle and hinged at back opening the three sloped compartments with a longer compartment in front for nibs; fine and scarce  
£200-250



399 A fine cast novelty two compartment box in the form of a tortoise, the shell hinged and opening to reveal two counter sunk sloped compartments; most unusual. Scarce  
£200-250



398 A novelty bronze two compartment box modelled as a fox curled up on a tree stump and showing a rabbit poking it's head out from underneath, hinged to a plain flat base opening to two gilded sloped compartments; fine and very rare  
£200-250



400 A copper plated three compartment box, the plain skirted base with a hinged lid at top engraved with flowers and birds, opening to three sloped compartments; fine  
£200-250



401 A novelty bronze single compartment box in the form of a lion's head, the head hinged to a flat base opening to a single sloped compartment; fine and rare

£200-250



403 1870c. a slightly larger dispenser by J. Bedington, the front with floral scrolls and "THE RECEIPT STAMP BOX", the reverse showing an engraved engine turned pattern; fine and rare

£350-400



402 A novelty bronze single compartment box modelled as a pug dog's head, having glass eyes, the head hinged to a flat base opening to a single sloped compartment; fine and rare

£250-300



404 1870c. a small brass dispenser by J. Bedington, the front embossed with floral scrolls and "POSTAGE STAMPS", the reverse embossed with postal rates; fine and very rare

£400-500



405 1874c. four compartment case probably by Avery, opening in half with each side embossed with a bust of Queen Victoria and impressed "STAMP CASE REGD. AUG 1 1874", the four individual internal sleeves embossed with ½d., 1d., 2d., and R (for receipt stamps); fine and very rare with only two or three examples known to date

£400-500

406 A late nineteenth century silvered iron stamp box by Kyoto, the cover cast in a low relief with a scene of a village with gold overlaid highlights, the gilt interior engraved with a rocky outcrop and a crane in flight; fine and very rare

£500-600



407 A superb late nineteenth century Chinese silvered iron two compartment box probably by Kyoto, the plain base with a hinged lid at top finely inlaid with a gold and silver design of two men pulling a geisha along in a rickshaw, opening to a fine gold interior; an exquisite box of superb quality

£800-1,000



408 A single compartment box by Kyoto, decorated throughout with gold overlay scenes, the hinged lid at top showing flowers and birds, opening to a gold interior; fine and most attractive. very rare

£1,000-1,200



409 1854 coil dispenser, cylindrical design with domed cover embossed with the Royal Coat of Arms and "WARTON'S ROTARY STAMP BOX REGISTERED OCT. 21. 1854", the front with applied 1854 1d. stamp in brass covering the dispensing slot; a very early stamp box and possibly an experimental type produced to commemorate the first perforated penny stamps. Fine and extremely rare and the only known example to date

£1,800-2,000

PROVENANCE:  
The "Paris" collection, December 2002  
Spink Auction, June 2007



410



411



412



413



414



415



416



417



418



419



420



421

**WOODEN BOXES**

- |   |  |
|---|--|
| <p>410 A four compartment tin plated box, square design the sides impressed with octagonal patterns and the hinged lid at top embossed with an eagles head, opening to four sloped compartment two plus two; fine and unusual</p> <p style="text-align: right;">£50-60</p>  | <p>416 A tin covered two compartment box, the base impressed with symmetrical patterns, the hinged lid at top showing the same design surrounding a green marble stone in the centre, opening to two sloped compartments; fine and unusual</p> <p style="text-align: right;">£70-90</p>              |
| <p>411 A polished wood two compartment box, the plain base with hinged lid at top with brass banding around the edge and and central wreath, opening to two sloped compartments; fine</p> <p style="text-align: right;">£50-60</p>  | <p>417 A Stuart Tartan Ware three compartment box, rectangular design with a hinged lid set into the top, opening to three individual compartments; very fine condition</p> <p style="text-align: right;">£80-100</p>  |
| <p>412 A wooden three compartment box, the base surmounted with a pewter banding, the hinged lid at top also with applied embossed pewter plaque, opening to three wooden sloped compartments; fine and unusual</p> <p style="text-align: right;">£70-90</p>  | <p>418 A tin covered four compartment box, rectangular design mounted on four ball feet, the base and hinged lid embossed with a floral pattern, opening to four wooden sloped compartments; fine and most attractive</p> <p style="text-align: right;">£80-100</p>                                  |
| <p>413 A Mauchline ware two compartment box, the hinged lid at top depicting a transfered scene of "Ryde, Isle of Wight", opening to two compartments; fine</p> <p style="text-align: right;">£70-90</p>  | <p>419 A tin covered four compartment box, rectangular design with an overall hammered finish, the hinged lid at top finely engraved with countryside picnic scene opening to four wooden sloped compartments; fine</p> <p style="text-align: right;">£90-100</p>                                    |
| <p>414 A four compartment brass covered lockable box (key missing), the brass "skin" showing a hammered and floral pattern around the base with two flowers set with green stones in the centre, the hinged lid at top embossed with cockerels set with red stones for the eyes, opening to four sloped compartments</p> <p style="text-align: right;">£70-90</p> | <p>420 A novelty carved wooden three compartment box in the form of a cat crouching on top of a basket inscribed "ST. CLAUDE", the lid of the basket hinged at top, opening to three sloped compartments; one of the dividers missing, otherwise fine</p> <p style="text-align: right;">£100-120</p> |
| <p>415 A tin covered two compartment box, the base impressed with foliate scrolls, the hinged lid at top fine engraved with bar room scene opening to two wooden sloped compartments; fine</p> <p style="text-align: right;">£70-90</p>   | <p>421 A Tunbridge ware stamp box, rectangular design the base decorated with a mosaic pattern and having a lift of lid at top also showing a mosaic pattern surrounding "STAMPS"; fine and rare</p> <p style="text-align: right;">£120-150</p>  |

**NOT ABLE TO ATTEND THE SALE IN PERSON?**

Spink have invested a great deal of energy in developing what we consider to be one of the best online bidding platforms currently available.



When you log on to Spink Live you can immediately watch and listen to the auctioneer as he calls the bids while using the online platform to place your own bids in real time.

You never have to miss a bid again!

We now also offer Spink Live for our auctions in New York, Singapore and Hong Kong.

For more information on bidding using spink live visit  
**WWW.SPINK.COM**



422 A novelty two compartment carved wooden box in the form of a bear's head, the top of the head hinged so the head opens at the mouth to two concave compartments; fine and scarce  
£120-150



424 A bird's eye maple three compartment stamp box and rocker blotter combined, the hinged lid at top surmounted with a fine painted bronze dog, opening to three sloped compartments and a larger concave compartment for nibs; fine and most attractive  
£150-180



423 1914c. an oak four compartment box, plain base with a hinged lid at top inlaid with a brass and enamel plaque finely engraved with nine different shields surrounded by leaves and illegibly signed at lower right, opening to four sloped compartments; fine and unusual  
£150-180



425 1906 a fine ebonised two compartment box formed as a stationery box, the curved front hinged lid at top with applied sterling silver plaque (Birmingham 1906) marked "stamps", opening to a red lined two sloped interior; fine and attractive  
£150-200



426 A fine carved oak four compartment box, mounted with a carved wooden dog laying on the plinth style base, which has a slide out draw at right opening to four sloped compartments; a fine and well executed piece

£180-200



428 1905 Birmingham a very fine walnut and silver mounted three compartment lockable (key present) box by Levi & Salaman, the hinged lid a top surmounted with silver script "Stamps" sideways through the centre along with applied silver embossed plaques showing a ribbon design opening to three wooden sloped compartments; fine and most attractive

£300-350

## OTHER MATERIALS



427 A mahogany three compartment box, plain base with a hinged lid at top inlaid with a pietra dura plaque in the centre and a coloured inlaid banding, opening to three white painted sloped compartments; fine and scarce

£200-250



429 1903 silver and leather four compartment stamp box and note pad combined, the red leather base with a pull out draw at front opening to four sloped compartments at front and two concave compartments behind for nibs, the top with a silver frame surrounding a cut out housing the note paper; fine and unusual

£70-90



430 1920c. a fine Art Nouveau style pewter overlay on wood two compartment box, overall hammered finish, the hinged lid at top mounted with a green stone, opening to two black sloped compartments; fine

£80-100



432 1920c. a fine silver and grey opaline glass two compartment box, the plain glass base in a stepped half round design, with a silver collar holding the the bevelled glass lid, opening to two sloped compartments; fine and most attractive

£100-120



431 A large silk covered three compartment box, the hinged lid at top embroidered with a floral pattern surrounded by gold rope garlands, opening to three sloped compartments; fine and most attractive

£100-120



433 A purple glass three compartment box, the bevelled glass lid hinged to the solid base by brass shell design hinges opening to three cut-out sloped compartments; fine

£100-120



434 A four compartment Bois Durci box, the carved base with pen rest at front, hinged lid at top with a floral design opening to four sloped compartments; fine and unusual

£100-120



436 A brown leather stamp and nib box combined, the rectangular base with a spread foot and having gold tooling around the edges, the hinged lid at top with an embroidered silk panel under glass opening to three compartments with a concave compartment behind for nibs, the top with additional domed top lid opening to a larger compartment; fine and attractive

£120-150



435 A leather two compartment stamp, nib box and rocker blotter combined, the brown leather hinged lid at top finely tooled with floral and garland patterns, opening to two wooden sloped compartments and a larger concave compartment for nibs; fine and unusual

£120-150



437 1901c. mother of pearl veneered single compartment box, plain design with a single hinged lid opening to a green silk lined interior with single slope; fine and most attractive

£150-180



438 1905c. mother of pearl single compartment case, flat design the top engraved with floral patterns and having a slide out lid with a lattice work pattern, opening to a single compartment; fine and attractive

£180-200



440 1894 Chester tortoiseshell two compartment box by Saunders & Shepherd, plain design with the hinged lid at top surmounted with "Stamps" in sterling silver script, opening to two wooden sloped compartments; fine and scarce

£200-250



439 1900c. a fine celluloid veneered on wood single compartment box, plain base with the hinged lid at top finely hand painted with two birds perched on a branch, opening to a single sloped compartment; fine and attractive

£200-220



441 A Bois Durci two compartment stamp box and inkwell combined, the finely carved base with a hinged lid at front opening to two sloped compartments, the the back housing a glass well; fine and rare

£200-250



442 1910c. four compartment tortoiseshell and brass inlaid boule work box by J.C. Vickery, rectangular design with fine brass inlaid patterns on the sides and hinged lid at top opening to four wooden sloped compartments; some restoration work, otherwise fine and attractive. Rare

£250-300



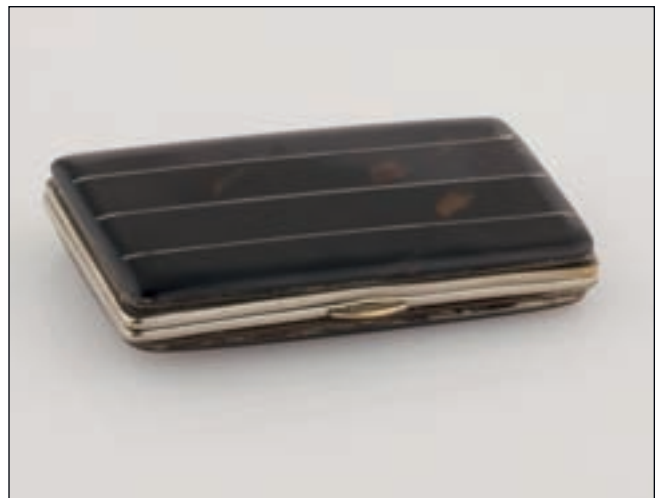
444 1899 Birmingham silver and crocodile skin purse with maker's mark L.K. the flap at front mounted with a pierced silver clasp opening to a very fine leather interior with two compartments for stamps, the under side of the flap bearing a silver tooled inscription "*Presented to/H.R.H The Duchess of Connaught/at the opening of the Y.M.C.A. Building/Newcastle-on-Tyne. May 9th 1900/by Miss Smith*"; very fine and of superb quality

£300-320



443 1920c. mother of pearl veneered three compartment box, mounted on four bone bun feet, the hinged lid at top opening to a blue silk lined interior with three sloped compartments; fine and most attractive. Rare

£280-300



445 1900c. a silver plated and tortoiseshell stamp and card case combined marked Patent T.J.S.S & D Vienna Make, the silver plated body mounted with an inlaid tortoiseshell panel at either side, opening to a leather fitted interior with three individual compartments for stamps; fine and most attractive

£300-320



446 A slate three compartment stamp and nib box combined, the plain base with a lift of lid at top inlaid with a mother of pearl picture of the Taj Mahal, opening to three sloped compartments and a larger compartment probably for nibs; fine and unusual most likely to have been made for an army officer serving in India

£380-400



447 A porcelain octagonal desk set, the side panels painted with birds and flowers, the top similarly decorated, the compendium set into the top comprising a two compartment stamp box with lift of lid, two inkwells, seal, central taper holder and pen/quill rest; fine and most attractive. Very rare

£800-1,000



448 An opaque glass three compartment box signed by the artist F Walter Hancy, the ochre coloured base painted with a foliate pattern, the lift off lid at top with central handle modelled as a snail crawling across vegetation, opening to three sloped compartments; an extremely fine and rare piece of exceptional quality

£1,800-2,000

**RELATED ITEMS**



449 1883 London novelty silver cigarette case modelled as an envelope by Louis Dee, the front bearing a finely enamelled Great Britain 1881 1d. lilac stamp "cancelled" by black enamel c.d.s with the script address in black enamel, the reverse showing the reverse of the envelope in black enamel and arrival c.d.s; fine and very rare

£800-1,000

451 1888 sterling silver novelty cigarette case in the form of an envelope (unmarked), the front bearing two finely enamelled Egyptian 1888 2m green and 5m red stamps "cancelled" by part Cairo c.d.s. with engraved address; fine and scarce

£800-1,000



450 1886 London novelty cigarette case in the form of an envelope, the front bearing an enamel 1d. stamp "cancelled" in black enamel by an Ambleside duplex cancel, with the address also in black enamel, the reverse of the envelope bearing "RYDAL HALL AMBLESIDE" in enamel lettering and black enamel "LEAMINGTON" c.d.s.; fine and very rare

£800-1,000



452 1988 London silver and glass stamp moistener maker's mark A.N, the silver filigree patterned base mounted on lion's paw feet, with inset glass reservoir and roller; fine

£150-180

**END OF THE SALE - THANK YOU**

# The RICHARD J. RINKOFF COLLECTION of British Empire Postage Stamps

July 24, 2009 • New York

Spink Shreves Galleries is proud and honoured to have been chosen to handle the unreserved auction sale of another marvelous collection of British Empire postage stamps. The exceptional Richard J. Rinkoff Collection will be sold in our New York City auction galleries on Friday, July 24, 2009.

Turks Islands S.G. #32, o.g.  
RPS certificate  
fewer than six known  
ex-Dale-Lichtenstein,  
Prappas & Gross  
Catalog value: £8,500



Rhodesia S.G. #166b, o.g., error of color  
one of the finest known  
ex-"Appollonia"  
Catalog value: £10,000



Mauritius S.G. #6, used,  
PF & Brandon certi-  
ficates  
superb used single  
ex-Chapin  
Catalog value: £6,000

Cape of Good Hope S.G. # 13c, used, BPA certificate  
woodblock error of color,  
ex-"Capetown"  
Catalog value: £28,000



Malaya S.G. #15, part o.g.  
BPA certificate  
no more than five  
mint examples recorded  
Catalog value: £27,000



Malaya S.G. #J116a, o.g., BPA certificate  
one of only six recorded  
Catalog value: £5,500



East Africa & Uganda S.G. #63, o.g., BPA certificate  
extraordinary quality mint example  
ex-Baillie  
Catalog value: £22,000



Uganda S.G. #7, used  
rarely seen stamp  
ex-Dr. Scott  
Catalog value: £5,500

The Rinkoff Collection is a wonderfully comprehensive assemblage of the entire Empire - with special emphasis on the stamps from British Africa, British America and Malayan States, as well as a strong representation from the Pacific Islands. Some of the more challenging areas focused on include the Uganda Missionary stamps, as well as Japanese Occupation issues of Malaya. Completion was not Mr. Rinkoff's goal - but instead to acquire as many elusive and desirable stamps he could find in the finest possible condition, with the prerequisite that especially elusive items be accompanied by certificates of authenticity.

Luxurious all-colour catalogues for the Rinkoff sale are now available for \$20.00 each - postpaid. Orders may be placed online using a credit card at [www.SpinkShreves.com](http://www.SpinkShreves.com) or by calling 972-788-2100. Additionally, the entire sale has been posted to our website.

SPECIAL LONDON VIEWING

July 13-14, 2009

Visit [www.spinkshreves.com](http://www.spinkshreves.com) for details



**SPINK**

— FOUNDED 1666 —

SHREVES GALLERIES

[www.spinkshreves.com](http://www.spinkshreves.com)

3100 Monticello, Ste. 925 Dallas, TX 75205 PHONE 972/788-2100 FAX 972/788-2788  
145 W. 57th St., 18th Floor New York, N.Y. 10019 PHONE 212/262-8400 FAX 212/262-8484

# Spink Live

WATCH, LISTEN AND BID  
AS IF YOU WERE IN THE ROOM.  
WITH SPINK LIVE YOU WILL NEVER  
MISS AN AUCTION AGAIN.

Visit [www.spink.com](http://www.spink.com)  
to register today for sales of  
Coins, Banknotes, Bonds & Shares, Medals, Stamps and Autographs  
in  
London, New York, Hong Kong & Singapore.







# TERMS AND CONDITIONS FOR BUYERS

These conditions set out the terms on which we (**Spink and Son Limited** of 69 Southampton Row, Bloomsbury London WC1B 4ET (company no. 04369748)) contract with you (**Buyer**) either as agent on behalf of the Seller or as principal if we are the Seller. You should read these conditions carefully.

## 1 DEFINITIONS

The following definitions in this condition apply in these conditions.

<b>Auctioneers' Margin Scheme</b>	means a VAT margin scheme as defined by HM Revenue & Customs;
<b>Buyer's Premium</b>	means the charge payable by you as a percentage of the Hammer Price, at the rates set out in clause 5.1 below;
<b>Certificate of Authenticity</b>	means a certificate issued by an Expert Committee confirming the authenticity of a Lot;
<b>Expert Committee</b>	means a committee of experts to whom a Lot may be sent for an extension in accordance with clause 3.4.3;
<b>Forgery</b>	means a Lot constituting an imitation originally conceived and executed as a whole with a fraudulent intention to deceive as to authorship, origin, age, period, culture or source where the correct description as to such matters is not reflected by the description in the catalogue and which at the date of the auction had a value materially less than it would have had if it had been in accordance with the description in the catalogue. Accordingly, no Lot shall be capable of being a Forgery by reason of any damage and/or restoration work of any kind (including re-enamelling);
<b>Hammer Price</b>	means the amount of the highest bid accepted by the auctioneer in relation to a Lot;
<b>Lot</b>	means any item deposited with us for sale at auction and, in particular, the item or items described against any lot number in any catalogue;
<b>Reserve</b>	the amount below which we agree with the Seller that the Lot cannot be sold;
<b>Seller</b>	means the owner of the Lot being sold by us;
<b>Spink Group</b>	Spink and Son Limited, our subsidiaries and associated companies.
<b>VAT</b>	value added tax chargeable under VATA and any similar replacement or additional tax; and
<b>VAT Symbols</b>	means the symbols detailing the VAT status of the Lot details of which are set out at the back of the catalogue.

## 2 SPINK'S ROLE AS AGENT

- 2.1 All sales undertaken by us either at auction or privately are undertaken either as agent on behalf of the Seller or from time to time, as principal if we are the owner of the Lot. Please note that even if we are acting as agent on behalf of the Seller rather than as principal, we may have a financial interest in the Lot.
- 2.2 The contract for the sale of the Lot will be between you and the Seller.

## 3 BEFORE THE SALE

- 3.1 **Examination of goods**  
You are strongly advised to examine personally any goods in which you are interested, before the auction takes place. Condition reports are usually available on request. We provide no guarantee to you other than in relation to Forgeries, as set out in clause 5.13 of these Terms and Conditions.
- 3.2 **Catalogue descriptions**
  - 3.2.1 Statements by us in the catalogue or condition report, or made orally or in writing elsewhere, regarding the authorship, origin, date, age, size, medium, attribution, genuineness, provenance, condition or estimated selling price of any Lot are merely statements of opinion, and are not to be relied on as statements of definitive fact. Catalogue illustrations are for guidance only, and should not be relied on either to determine the tone or colour of any item or to reveal imperfections. Estimates of the selling price should not be relied on as a statement that this price is either the price at which the Lot will sell or its value for any other purpose.
  - 3.2.2 Many items are of an age or nature which precludes their being in perfect condition and some descriptions in the catalogue or given by way of condition report make reference to damage and/or restoration. We provide this information for guidance only and the absence of such a reference does not imply that an item is free from defects or restoration nor does a reference to particular defects imply the absence of any others.
  - 3.2.3 Other than as set out in clause 5.13, and in the absence of fraud, neither the Seller nor we, nor any of our employees or agents, are responsible for the correctness of any statement as to the authorship, origin, date, age, attribution, genuineness or provenance of any Lot nor for any other errors of description or for any faults or defects in any Lot.
- 3.3 **Your Responsibility**  
You are responsible for satisfying yourself as to the condition of the goods and the matters referred to in the catalogue description.

## 3.4 Extensions – Stamps only

- 3.4.1 If you wish to obtain an expert opinion or Certificate of Authenticity on any Lot (other than a mixed lot or lot containing undescribed stamps) you must notify us in writing not less than forty-eight hours before the time fixed for the commencement of the first session of the sale. If accepted by us, such request shall have the same effect as notice of an intention to question the genuineness or description of the Lot for the purposes of clause 5.13 of these Terms and Conditions and the provisions of clause 5.13 shall apply accordingly.
- 3.4.2 Notice of a request for an expert opinion or Certificate of Authenticity must give the reason why such opinion is required and specify the identity of your proposed expert which will be subject to agreement by us.
- 3.4.3 If we accept a request for an expert opinion or Certificate of Authenticity we will submit the Lot to the Expert Committee.
- 3.4.4 We will not normally accept a request for an extension on account of condition. Any Lot described in the catalogue as having faults or defects may not be returned even if an expert opinion or Certificate of Authenticity cites other faults or defects not included in the catalogue description, other than in the case of a Forgery.
- 3.4.5 Should Spink accept a request for an extension under the foregoing provisions of this paragraph, the fact may be stated by the Auctioneer from the rostrum prior to the sale of the Lot.
- 3.4.6 It should be noted that any stamp accompanied by a Certificate of Authenticity is sold on the basis of that Certificate only and not on the basis of any other description or warranty as to authenticity. No request for an extension will be accepted on such a stamp and the return of such a stamp will not be accepted.

## 4 AT THE SALE

### 4.1 Refusal of admission

Our sales usually take place on our own premises or premises over which we have control for the sale, and we have the right, exercisable at our complete discretion, to refuse admission to the premises or attendance at an auction.

### 4.2 Registration before bidding

You must complete and sign a registration form and provide identification before making a bid at auction. Please be aware that we usually require buyers to undergo a credit check.

- 4.3 **Bidding as Principal**  
When making a bid (whether such bids are made in person or by way of telephone bids operated by Spink, commission or online or email bids), you will be deemed to be acting as principal and will be accepting personal liability, unless it has been agreed in writing, at the time of registration, that you are acting as agent on behalf of a third party buyer acceptable to us.
- 4.4 **Commission Bids**  
If you give us instructions to bid on your behalf, by using the form provided in our catalogues or via our website, we shall use reasonable endeavours to do so, provided these instructions are received not later than 24 hours before the auction. If we receive commission bids on a particular Lot for identical amounts, and at auction these bids are the highest bids for the Lot, it will be sold to the person whose bid was received first. Commission bids are undertaken subject to other commitments at the time of the sale, and the conduct of the auction may be such that we are unable to bid as requested. Since this is undertaken as a free service to prospective buyers on the terms stated, we cannot accept liability for failure to make a commission bid. You should therefore always attend personally if you wish to be certain of bidding.
- 4.5 **On-line Bidding**  
We offer internet services as a convenience to our clients. We will not be responsible for errors or failures to execute bids placed on the internet, including, without limitation, errors or failures caused by (i) a loss of internet connection by either party for whatever reason; (ii) a breakdown or problems with the online bidding software and/or (iii) a breakdown or problems with your internet connection, computer or system. Execution of on-line internet bids is a free service undertaken subject to other commitments at the time of the auction and we do not accept liability for failing to execute an online internet bid or for errors or omissions in connection with this activity.
- 4.6 **Telephone Bids**  
If you make arrangements with us not less than 24 hours before the sale, we shall use reasonable endeavours to contact you to enable you to participate in bidding by telephone, but in no circumstances will we be liable to either the Seller or you as a result of failure to do so.
- 4.7 **Currency Converter**  
At some auctions, a currency converter will be operated, based on the one month forward rates of exchange quoted to us by Royal Bank of Scotland or any other appropriate rate determined by us, at opening on the date of the auction. Bidding will take place in a currency determined by us, which is usually sterling for auctions held in London. The currency converter is not always reliable, and errors may occur beyond our control either in the accuracy of the Lot number displayed on the converter, or the foreign currency equivalent of sterling bids. We shall not be liable to you for any loss suffered as a result of you following the currency converter.
- 4.8 **Video images**  
At some auctions there will be a video screen. Mistakes may occur in its operation, and we cannot be liable to you regarding either the correspondence of the image to the Lot being sold or the quality of the image as a reproduction of the original.
- 4.9 **Bidding Increments**  
Bidding generally opens below the low estimate and advances in the following order although the auctioneer may vary the bidding increments during the course of the auction. The normal bidding increments are:
- |                   |                                  |
|-------------------|----------------------------------|
| Up to £100        | by £5                            |
| £100 to £300      | by £10                           |
| £300 to £600      | £320-£350-£380-£400 etc.         |
| £600 to £1,000    | by £50                           |
| £1,000 to £3,000  | by £100                          |
| £3,000 to £6,000  | £3,200-£3,500-£3,800-£4,000 etc. |
| £6,000 to £20,000 | by £500                          |
| £20,000 and up    | Auctioneer's discretion          |
- 4.10 **Bidding by Spink**  
4.10.1 We reserve the right to bid on Lots on the Seller's behalf up to the amount of the Reserve (if any), which will never be above the low estimate printed in the auction catalogue.  
4.10.2 The Spink Group reserves the right to bid on and purchase Lots as principal.
- 4.11 **The Auctioneer's Discretion**  
The auctioneer has the right at his absolute discretion to refuse any bid to advance the bidding in such manner as he may decide to withdraw or divide any Lot, to combine any two or more Lots and, in the case of error or dispute, to put an item up for bidding again.
- 4.12 **Successful Bid**  
Subject to the auctioneer's discretion, the striking of his hammer marks the acceptance of the highest bid, provided always that such bid is higher than the Reserve (where applicable), and the conclusion of a contract for sale between you and the Seller.
- 4.13 **After Sale Arrangements**  
If you enter into any private sale agreements for any Lot with the Seller within 60 days of the auction, we, as exclusive agents of the Seller reserve the right to charge you the applicable Buyer's Premium in accordance with these Terms and Conditions, and the Seller a commission in accordance with the terms of the Seller's agreement.
- 5 **AFTER THE AUCTION**
- 5.1 **Buyer's Premium**  
In addition to the Hammer Price, you must pay us the Buyer's Premium at a rate of 20% of the final Hammer Price of each Lot up to and including £2,000 and 15% of the excess of the Hammer Price above £2,000.
- 5.2 **Value Added Tax**  
Other than in respect of zero-rated lots (see VAT Symbols for details), VAT is always payable on the Buyer's Premium. It may also be payable on the Hammer Price, if the Lot has been marked with a sign to that effect in the catalogue (see VAT Symbols for details).
- 5.3 **VAT Refunds**  
**General**  
5.3.1 As we remain liable to account for VAT on all Lots unless proof of export is held, you will generally be asked to deposit all amounts of VAT invoiced. However, if a Spink nominated shipper is instructed, then any refundable VAT will not be collected. In all other cases credits will be made when proof of export is provided.  
5.3.2 If you export the Lot you must return the valid proof of export certificate to us within 30 days of export. If you fail to return the proof of export certificate to us within such period and you have not already accounted to us for the VAT, you will be liable to us for the full amount of the VAT due on such Lot and we shall be entitled to invoice you for this sum.  
5.3.3 To apply for a refund of any VAT paid, the proof of export certificate must be sent to our accounts department clearly marked 'VAT Refund' within 30 days of export. No payment will be made where the total amount of VAT refundable is less than £50.
- VAT Refunds - Buyers from within the EU**  
5.3.4 VAT refunds are available only on the Hammer Price of daggered lots invoiced on the VAT on taxable lots' page. You must certify that you are registered for VAT in another EU country and that the Lot is to be removed from the United Kingdom.  
5.3.5 Where an EU buyer purchases a Lot on which import VAT has been charged, no refund of VAT is available from us.
- VAT Refunds - Buyers from outside the EU**  
5.3.6 Where a Lot is included within the Auctioneers' Margin Scheme and evidence of export from the EU is produced, the VAT element included within the Buyer's Premium may be refunded.  
5.3.7 Where the Lot is marked as a Daggered (†) lot the VAT charged on the Hammer Price may be refunded where evidence of export from the EU is produced. No refund of VAT charged on the Buyers' Premium will be made.  
5.3.8 Where the Lot is marked as an Omega (Ω) lot or an Import VAT (x) lot and evidence of export from the EU is produced, the VAT charged on both the Hammer Price and Buyer's Premium may be refunded. Where required, we can advise you on how to export such Lots as a specific form of export evidence is required. Where we advise you on the export of the Lots, please be aware that the ultimate responsibility in respect of obtaining a valid proof of export certificate will lie with you and we will not be responsible for your failure to obtain such certificate.
- 5.4 **Payment**  
5.4.1 You must provide us with your full name and permanent address and, if so requested, details of the bank from which any payments to us will be made. You must pay the full amount due (comprising the Hammer Price, the Buyer's Premium and any applicable VAT) within seven days after the date of the sale. This applies even if you wish to export the Lot and an export licence is (or may be) required.  
5.4.2 You will not acquire title to the Lot until all amounts due to us have been paid in full to us, even in circumstances where we have released the Lot to you.

5.4.3 Payment should be made in sterling by one of the following methods:

- (i) Direct bank transfer to our account details of which are set out on the invoice. All bank charges shall be met by you. Please ensure that your client number is noted on the transfer.
- (ii) By cheque or bank draft made payable to Spink and Son Ltd and sent to Spink at 69 Southampton Row, Bloomsbury, London WC1B 4ET. Please note that the processing charges for payments made by cheques or bank drafts drawn on a non-U.K bank shall be met by you. Please ensure that the remittance slip printed at the bottom of the invoice is enclosed with your payment.
- (iii) By Visa or Mastercard. A charge of 2% will be applied. Payments exceeding £5,000 can normally only be made by the card holder in person whilst on our premises.

#### 5.5 Invoices

Invoices may consist of one or more pages and will show: zero rated lots; lots sold under the Auctioneers' Margin Scheme; lots marked (g) special scheme investment gold; daggered lots (†), lots marked (x) import VAT and lots marked (Ω) omega lots.

#### 5.6 Collection of Purchases

5.6.1 Unless we specifically agree to the contrary, we shall retain items sold until all amounts due to us, or to the Spink Group, have been paid in full.

5.6.2 Unless we notify you to the contrary, items retained by us will be covered in accordance with our policy which is available for inspection at our offices from the date of sale for a period of seven days or until the time of collection, whichever is sooner. After seven days or from the time of collection, whichever is the earlier, the Lot will be entirely at your risk.

5.6.3 Our policy will not cover and we are unable to accept responsibility for damage caused by woodworm, changes in atmospheric conditions or acts of terrorism.

#### 5.7 Notification

We are not able to notify successful bidders by telephone. While Invoices are sent out by mail after the auction we do not accept responsibility for notifying you of the result of your bid. You are requested to contact us by telephone or in person as soon as possible after the auction to obtain details of the outcome of your bids to avoid incurring charges for late payment.

#### 5.8 Packing and handling

We shall use all reasonable endeavours to take care when handling and packing a purchased Lot but remind you that after seven days or from the time of collection, whichever is sooner, the Lot is entirely at your risk. Our postage charges are set out at the back of the catalogue.

#### 5.9 Recommended packers and shippers

If required our shipping department may arrange shipment as your agent. Although we may suggest carriers if specifically requested, our suggestions are made on the basis of our general experience of such parties in the past and we are not responsible to any person to whom we have made a recommendation for the acts or omissions of the third parties concerned.

#### 5.10 Remedies for non-payment or failure to collect purchases

5.10.1 If you fail to make payment within seven days of your stipulated payment date set out in your invoice, we shall be entitled to exercise one or more of the following rights or remedies:

- 5.10.1.1 to charge interest at the rate of 2% per month compound interest, calculated on a daily basis, from the date the full amount is due;
- 5.10.1.2 to set off against any amounts which the Spink Group may owe you in any other transaction the outstanding amount remaining unpaid by you;
- 5.10.1.3 we may keep hold of all or some of your Lots or other property in the possession of the Spink Group until you have paid all the amounts you owe us or the Spink Group, even if the unpaid amounts do not relate to those Lots or other property. Following fourteen days' notice to you of the amount outstanding and remaining unpaid, the Spink Group shall have the right to arrange the sale of such Lots or other property. We shall apply the proceeds in discharge of the amount outstanding to us or the Spink Group, and pay any balance to you;
- 5.10.1.4 where several amounts are owed by you to the Spink Group in respect of different transactions, to apply any amount paid to discharge any amount owed in respect of any particular transaction, whether or not you so direct;

5.10.1.5 to reject at any future auction any bids made by you or on your behalf or obtain a deposit from you before accepting any bids.

5.10.2 If you fail to make payment within thirty-five days, we shall in addition be entitled:

5.10.2.1 to cancel the sale of the Lot or any other item sold to you at the same or any other auction;

5.10.2.2 to arrange a resale of the Lot, publicly or privately, and, if this results in a lower price being obtained, claim the balance from you together with all reasonable costs including a 20% seller's commission, expenses, damages, legal fees, commissions and premiums of whatever kind associated with both sales or otherwise, incurred in connection with your failure to make payment; or

5.10.2.3 take any other appropriate action as we deem fit.

#### 5.11 Failure to collect

Where purchases are not collected within seven days after the sale, whether or not payment has been made, you will be required to pay a storage charge of £2 per item per day plus any additional handling cost that may apply. You will not be entitled to collect the Lot until all outstanding charges are met, together with payment of all other amounts due to us.

#### 5.12 Export Licence

5.12.1 If required we can, at our discretion, advise you on the detailed provisions of the export licensing regulations. Where we advise you in relation to export licensing regulations the ultimate responsibility in respect of any export will lie with you and we will not be responsible for your failure to apply for any necessary licences.

5.12.2 If the Lot is going to be hand carried by you, you may be required to produce a valid export licence to us or sign a waiver document stating that a licence will be applied for.

5.12.3 You should always check whether an export licence is required before exporting. Export licences are usually obtained within two or three weeks but delays can occur.

5.12.4 Unless otherwise agreed by us in writing, the fact that you wish to apply for an export licence does not affect your obligation to make payment within seven days nor our right to charge interest on late payment.

5.12.5 If you request that we apply for an export licence on your behalf, we shall be entitled to recover from you our disbursements and out of pocket expenses in relation to such application, together with any relevant VAT.

5.12.6 We will not be obliged to rescind a sale nor to refund any interest or other expenses incurred by you where payment is made by you despite the fact that an export licence is required.

#### 5.13 Refund in the case of Forgery

5.13.1 A sale will be cancelled, and the amount paid refunded to you if a Lot (other than a miscellaneous item not described in the catalogue) sold by us proves to have been a Forgery. We shall not however be obliged to refund any amounts if either (a) the catalogue description or saleroom notice at the auction date corresponded to the generally accepted opinion of scholars or experts at that time, or fairly indicated that there was a conflict of opinions, or (b) it can be demonstrated that the Lot is a Forgery only by means of either a scientific process not generally accepted for use until after publication of the catalogue or a process which at the date of the auction was unreasonably expensive or impracticable or likely to have caused damage to the Lot. Furthermore, you should note that this refund can be obtained only if the following conditions are met:

5.13.1.1 you must notify us in writing, within seven days of the auction date, that in your view the Lot concerned is a Forgery;

5.13.1.2 you must then return the item to us within fourteen days, in the same condition as at the auction date; and

5.13.1.3 as soon as possible following return of the Lot, you must produce evidence satisfactory to us that the Lot is a Forgery and that you are able to transfer good title to us, free from any third party claims.

5.13.2 In no circumstances shall we be required to pay you any more than the amount paid by you for the Lot concerned and you shall have no claim for interest.

5.13.3 The benefit of this guarantee is not capable of being transferred, and is solely for the benefit of the person to whom the original invoice was made out by us in respect of the Lot when sold and who, since the sale, has remained the owner of the Lot without disposing of any interest in it to any third party.

5.13.4 We shall be entitled to rely on any scientific or other process to establish that the Lot is not a Forgery, whether or not such process was used or in use at the date of the auction.

## 6 LIABILITY

Nothing in these Terms and Conditions limits or excludes our liability for:

- 6.1 death or personal injury resulting from negligence; or
- 6.2 any damage or liability incurred by you as a result of our fraud or fraudulent misrepresentation.

## 7 COPYRIGHT

7.1 We shall have the right (on a non-exclusive basis) to photograph, video or otherwise produce an image of the Lot. All rights in such an image will belong to us, and we shall have the right to use it in whatever way we see fit.

7.2 The copyright in all images, illustrations and written material relating to a Lot is and shall remain at all times our property and we shall have the right to use it in whatever way we see fit. You shall not use or allow anyone else to use such images, illustrations or written material without our prior written consent.

## 8 VAT

You shall give us all relevant information about your VAT status and that of the Lot to ensure that the correct information is printed in the catalogues. Once printed, the information cannot be changed. If we incur any unforeseen cost or expense as a result of the information being incorrect, you will reimburse to us on demand the full amount incurred.

## 9 NOTICES

All notices given under these Terms and Conditions may be served personally, sent by 1st class post, or faxed to the address given to the sender by the other party. Any notice sent by post will be deemed to have been received on the second working day after posting or, if the addressee is overseas, on the fifth working day after posting. Any notice sent by fax or served personally will be deemed to be delivered on the first working day following despatch.

## 10 ADDITIONAL PROVISIONS

The following provisions of this clause 10 shall apply only if you are acting for the purposes of your business.

### 10.1 Limitation of Liability

Subject to clause 6, we shall not be liable, whether in tort (including for negligence or breach of statutory duty), contract, misrepresentation or otherwise for any:

- 10.1.1 loss of profits, loss of business, depletion of goodwill and/or similar losses, loss of anticipated savings, loss of goods, loss of contract, loss of use, loss of corruption of data or information; or
- 10.1.2 any special, indirect, consequential or pure economic loss, costs, damages, charges or expenses.

### 10.2 Severability

If any part of these Terms and Condition is found by any court to be invalid, illegal or unenforceable, that part may be discounted and the rest of the conditions shall continue to be valid and enforceable to the fullest extent permitted by law.

### 10.3 Force majeure

We shall have no liability to you if we are prevented from, or delayed in performing, our obligations under these Terms and Conditions or from carrying on our business by acts, events, omissions or accidents beyond our reasonable control, including (without limitation) strikes, lock-outs or other industrial disputes (whether involving our workforce or the workforce of any other party), failure of a utility service or transport network, act of God, war, riot, civil commotion, malicious damage, compliance with any law or governmental order, rule, regulation or direction, accident, breakdown of plant or machinery, fire, flood, storm or default of suppliers or subcontractors.

### 10.4 Waiver

10.4.1 A waiver of any right under these Terms and Conditions is only effective if it is in writing and it applies only to the circumstances for which it is given. No failure or delay by a party in exercising any right or remedy under these Terms and Conditions or by law shall constitute a waiver of that (or any other) right or remedy, nor preclude or restrict its further exercise. No single or partial exercise of such right or remedy shall preclude or restrict the further exercise of that (or any other) right or remedy.

10.4.2 Unless specifically provided otherwise, rights arising under these Terms and Conditions are cumulative and do not exclude rights provided by law.

## 11 Law and Jurisdiction

11.1 These Terms and Conditions and any dispute or claim arising out of or in connection with them or their subject matter, shall be governed by, and construed in accordance with, the law of England and Wales.

11.2 The parties irrevocably agree that the courts of England and Wales shall have exclusive jurisdiction to settle any dispute or claim that arises out of, or in connection with, Terms and Conditions or their subject matter.

## Postal Charges

### Prices for books

(items sent by this method are not covered by insurance)

Weight	UK	EU	Rest of the World
Up to 1kg	£8 for any weight	£12	£15
Up to 2kg	£8 for any weight	£18	£25

### Prices for all other items including postage, packaging and insurance

Invoice Value	UK	Europe / Rest of the World
Up to £1,000	£9	£15
£1,001 – £3,000	£12	£18
£3,001 – £5,000	£15	£21
Above £5,001*	£20	£30

\*Minimum courier cost please contact [auktionteam@spink.com](mailto:auktionteam@spink.com) for actual cost

## Value Added Tax (VAT)

### Charging of (VAT) at auction

The information shown on this page sets out the way in which Spink intends to account for VAT.

#### i. Auctioneers' Margin Scheme

1. Where possible, we will offer Lots for sale under the Auctioneers' Margin Scheme. Such Lots can be identified by the absence of any symbol next to the lot number in the catalogue and will not be subject to VAT on the Hammer Price.
2. Where Lots are sold using the Auctioneers' Margin Scheme to VAT-registered businesses, the VAT included within the Buyers' Premium is not recoverable as input tax. Upon request on sale day, we will issue invoices that show VAT separately on both the Hammer Price and the Buyer's Premium. This will enable VAT-registered businesses to recover the VAT charged as input tax, subject to the normal rules for recovering input tax.

#### ii. Zero-Rated Lots

1. Limited Categories of goods, such as books, are zero-rated for VAT in the United Kingdom. Such Lots are offered under the Auctioneers' Margin Scheme. In these circumstances no VAT element will be included within the Buyer's Premium.

#### iii. Daggered Lots

1. Lots which are daggered (†) in the catalogue are subject to VAT at 15% on both the Hammer Price and the Buyer's Premium.

#### iv. Starred and Omega Lots

1. Lots which are marked (x) in the catalogue are subject to import VAT at 5% on the Hammer Price and 15% on the Buyer's Premium. Lots which bear the Omega symbol (Ω) are subject to import VAT at 15% on the Hammer Price. Such Lots bear VAT because the Lot is liable for VAT at this rate on importation into the EU.

#### v. Investment Gold Lots

1. Lots marked (g) in the catalogue are exempt from VAT on the Hammer Price and are subject to VAT at 15% on the Buyer's Premium.

#### vi. Imported Lots

1. Lots which are marked (x) and Lots which bear the Omega symbol (Ω) have VAT charged on the Hammer Price and Buyers' Premium because they have been imported into the United Kingdom from outside the EU. In these cases we have used a temporary importation procedure, which in effect means that the point of importation is deferred until the Lot has been sold. At this point the Buyer is treated as the importer and is liable to pay the import VAT due. We will collect the VAT from you and pay it to HM Customs and Excise on your behalf.