

INTRODUCTION

Readers of this website will not need to be told how difficult it can be these days to find unusual stamp boxes. They may be more surprised to read similar difficulties being written about over 40 years ago.

The little booklet reproduced below bemoans the passing of some classic designs - designs that do not appear to have been seen since.

The WEBMASTER would welcome reports of sightings.

(The original booklet measures 105 mm x 134 mm.
It is believed that it is no longer in print.)

SAVE
THAT
STAMP
BOX!

A MODEST GUIDE
TO SELECTED RARE STAMP BOXES



by J. J. JONES, D.S.B.C.

SAVE
THAT
STAMP
BOX!

A MODEST GUIDE
TO SELECTED RARE STAMP BOXES



by J.J. JONES, D.S.B.C.

COPYRIGHT 1967
by Pitney-Bowes, Inc.
Stamford, Connecticut

*To Arthur and Walter
for the pioneering efforts
that made this book possible.*

Foreword

The author herewith begs leave to express his gratitude to Pitney-Bowes, the well-known and highly regarded postage meter people, for their generous grant which has made possible the publication of this book on rare stamp boxes.

Inasmuch as Pitney-Bowes has been largely responsible for the passing of the stamp box, the author has the highest praise for their "sporting attitude" in helping to memorialize this vanishing artifact of the business world, so that its antiquarian charm may not be lost on future generations.

In appreciation of this magnanimous gesture, the author has appended an enlightening chapter on the Pitney-Bowes postage meter and related mailing equipment for the edification of such as may be desirous of "getting out the mail" in the most expeditious manner possible.

J.J.J.

Boston, Massachusetts, March 1967

Contents

Foreword.....	v
Chapter I Some Rare Stamp Boxes	3
Chapter II Some Not-So-Rare Postage Meters ...	15

about the author:

Long recognized as the world's foremost authority on stamp boxes, J.J. Jones proudly holds the honorary degree of Doctor of Stamp Box Collecting, conferred by the American Society of Philatelic Curiosa. Despite the dedicated pursuit of his hobby, Dr. Jones still finds ample time nonetheless to advance his principal career as management consultant in the field of packaging design. In fact, it is believed by many that Dr. Jones's familiarity with an infinite variety of stamp boxes has opened the way to many a "major breakthrough" in modern packaging.

Illustrations

Little Tuneful	4
The Bulldog	6
The Omni-Denominational Stamp Repository	8
The Abacus	10
The Jill-In-The-Box	12
Detachable Postage Meter	18

CHAPTER I

Some Rare Stamp Boxes

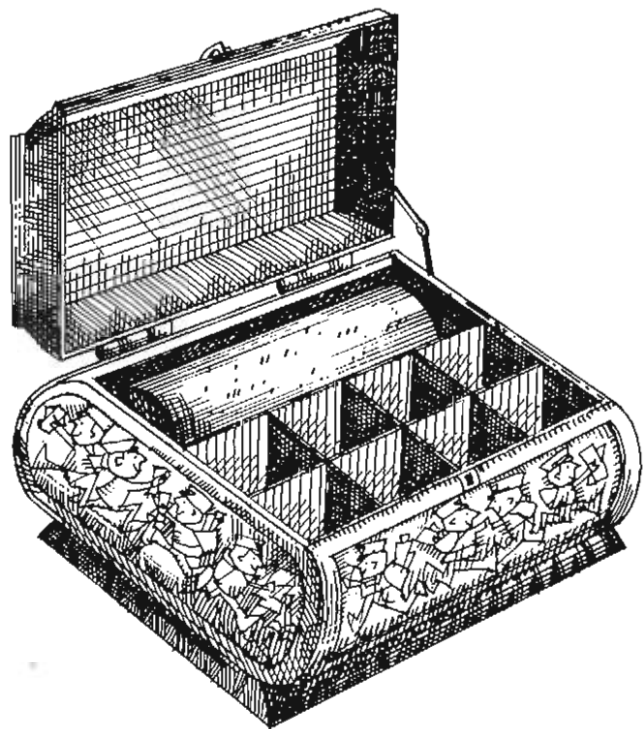
Let us first consider, albeit briefly, the historical background of stamp boxes, lest, of course, the great stamp box hoax of Colonel Purvis be once again perpetrated on an unwary collector.

For such as may be unfamiliar with Colonel Purvis and his unscrupulous dealings, suffice it to say that this glib rascal succeeded in bilking one Adelaide Tweedie of Dayton, Ohio of a not inconsiderable sum in June of 1923 by representing a stamp box of 1832 as the genuine article.

As aficionados of stamp box collecting are well aware, adhesive stamps were first introduced in Great Britain in 1840, and in the U.S. in 1847. Obviously, no authentic stamp boxes as such could have been available before these dates. In other words, Miss Tweedie got "stuck."

But perhaps I stray too far from the purpose of this modest volume which is designed to acquaint Gentle Reader with some of the more unusual and ingenious stamp boxes that have found favor with the business community over the years. Regretfully, we must eschew for the nonce an examination of the infinitely varied stamp boxes that once graced the escritorios of ladies of breeding.

Little Tuneful



First stop on our journey into the previously uncharted world of business stamp boxes is *Little Tuneful*, depicted here in an elegant woodcut. Truly a collector's item, this artful artifact was first produced by the Weehawken Novelty Company circa 1886.

As its name suggests, *Little Tuneful* is a musical stamp box which, when opened, plays a tune. Far from being merely a diverting toy, it was intended to overcome the employee ennui that inevitably attends the affixing of large numbers of adhesive stamps at one time.[†]

Interestingly enough, the early models were somewhat less than satisfactory from a business standpoint. Since they were designed to play *Brahms' Lullaby*, they served only to accentuate the tendency of the stamp-affixer to fall asleep at his task. However, later models featured a stirring rendition of *The Stars and Stripes Forever*, and a gratifying increase in the tempo of stamp affixing was soon noted.

Because of its exceptional rarity, the "Lullaby" model is more highly prized by collectors today. But the more common "March" model is still well worth the collecting.

[†]Since a Pitney-Bowes postage meter eliminates the whole tiresome ritual of "licking and sticking" stamps, no compulsion has been felt to add a lively musical accompaniment.

The Bulldog



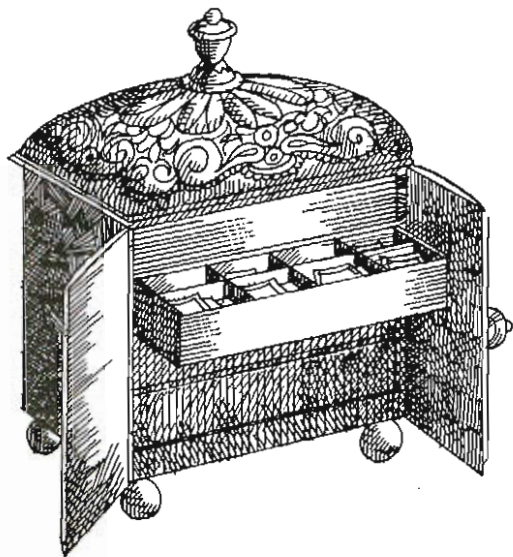
Next let us turn our attention to The Bulldog — a novel stamp box that “caught on” in business establishments around the turn of the century. The author hastens to advise Gentle Reader that this item should be handled only with the utmost caution for reasons that will become apparent.

Devised to guard against the almost uncanny way in which loose postage stamps tend to “disappear.” The Bulldog came to grips with the problem in forthright fashion. Though a lever on the side opens the beast’s jaws handily enough, revealing a cache of stamps, one must also give the dog’s tail a half turn to the right before reaching for a stamp. Otherwise, the jaws will snap shut on one’s hand, inflicting a rather nasty bite and wounding one’s dignity to boot.¹

The method of operation was, of course, a closely guarded secret in the “good old days.” And in fact, the author discovered it quite by accident.

¹Business establishments today generally eschew The Bulldog, preferring as they do to rely on the PB postage meter to prevent stamp losses.

The Omni-Denominational Stamp Repository



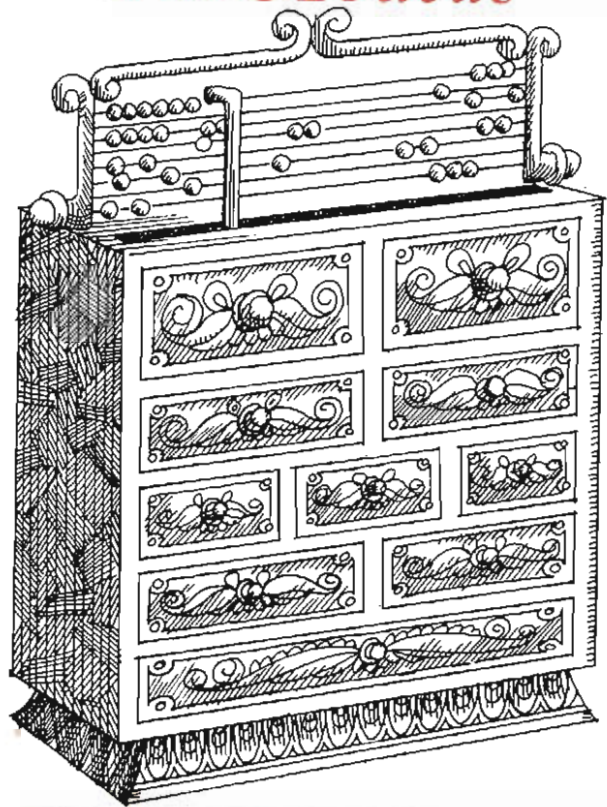
Familiarly known as the "Omni", this antique stamp box features four tiers of compartmented trays — each compartment being designed to contain a particular denomination of stamp. As may well be imagined, this arrangement met with an enthusiastic reception — especially from such as posted numerous parcels and perforce needed a large assortment of stamps of various denominations.†

While at first glance, the "Omni" might be considered the acme of efficiency, truth to tell, stamps kept straying unaccountably into the wrong compartments. And one sometimes hears the touching anecdote about the unfortunate clerk who had all four trays of stamps spread out on a desk when someone turned on the overhead fan full force.

Today, one occasionally "runs across" an "Omni" in dusty corners of old shipping rooms, or, masquerading as a jewel box, in milady's boudoir. Unfortunately, some over-zealous collectors have actually been apprehended in boudoirs and falsely charged with attempted jewel theft.

†Since you can set the PB postage meter for the exact postage required, there's no need for a higgledy-piggledy collection of postage stamps, or for the Omni-Denominational Stamp Repository.

The Abacus



Invented by one Ludwig Mueller of Yonkers, N.Y. in 1893, The Abacus represents one of the earliest attempts to develop a stamp box with automatic postage bookkeeping.¹ Despite this significant advance in stamp box design, Mr. Mueller was often referred to as "Crazy Ludwig" for reasons that are not altogether apparent today.

But back to The Abacus. It consists of ten stamp drawers, each accommodating a different denomination of stamp, from 1¢ to 10¢ — with somewhat larger drawers for the more commonly used 1¢ and 2¢ stamps of the past. Surmounting the drawers is an abacus. Upon opening a drawer, a "counter activator" in the top of the box moves the appropriate counter to the desired position indicating a withdrawal.

A thoughtful person will be instantly alerted to the numerous "loopholes" in this system. But for the collector, The Abacus is indeed a welcome "find."

†A far cry from this pioneering effort, the PB postage meter is endowed with a "built-in" system for keeping books on postage automatically and showing the results on easy-to-read registers.

The Jill-In-The-Box



One of the more dramatic stamp boxes, The Jill-In-The-Box "sprang into being", as it were, circa 1902. Designed to speed stamps to hand in short order, this intriguing device had a certain fleeting vogue among the more "sporty" executives of the day.

Upon release of the catch in the top of the apparatus, the figure of a maiden, posing languorously in the classic manner, pops into view, bearing aloft a basket of assorted stamps. All to the no small surprise of the unsuspecting bystander.[†]

Picture, if you will, the pretty confusion of a young lady lately from the seminary, who, upon being requested by her employer to procure a stamp, releases the catch and is instantly confronted by the female form. What a shock to tender sensibilities — particularly when compounded by the unfeeling guffaws of a heartless captain of industry!

Of course, in this more sophisticated age, The Jill-In-The-Box in her "mini-drapes" might not elicit a second glance — except from ardent stamp box collectors.

[†]While lacking the flamboyance of The Jill-In-The-Box, the PB postage meter is well-calculated to provide postage instantaner and otherwise save time and effort by eliminating various onerous chores.



A Smattering Of Addenda

Obviously, in the limited space at the author's disposal, it is not possible to produce the definitive work on stamp boxes and the collecting thereof. One will notice, for example, that *The Floradora*, *The Sternwheeler* and *The Prince Albert* are conspicuous by their absence.

While regretting these omissions, the author must now pay tribute to progress and go on to a consideration of that thrifty and efficient latterday "stamp box", known as the Pitney-Bowes postage meter.

Author's Note:

To answer the common query of collectors, "Where are the stamp boxes of yesteryear?", the author begs leave to pass on this helpful "tip." An excellent modus operandi for locating rare stamp boxes is to follow the PB salesman on his appointed rounds to look over the "antiques" that are discarded thereafter.

CHAPTER II

Some Not-So-Rare Postage Meters

In which the author explores the brave new world of the postage meter and metered mail

Since the Pitney-Bowes postage meter is so inexorably sounding the death knell of the old-fashioned stamp box in business offices both small and large, one comes to the inescapable conclusion that this device offers no small boon to business. And such indeed is the case.

Consider, for example, the salubrious effect on employee morale occasioned by use of the postage meter. The ever-vigilant protection of postage. The expeditious dispatch of mail to and through the post office. Consider, too, how the impeccable meter stamp enhances the appearance of one's envelopes and packages.

On the pages following, these and other benefits are spelled out in some detail. Their worthwhile nature will not escape the attention of the businessman of discernment and acumen.

The author is deeply indebted to Pitney-Bowes for graciously granting permission to "borrow" much of the subsequent material from previous works.

Eight Reasons Plus One Why Metered Mail Is A Must

NEW POSTAL CONVENIENCE Print postage right in your office — for any kind or class of mail. Save on trips to the post office for stamps.

STOP STAMP LOSSES Eliminate the need for keeping loose stamps and stamped envelopes. Protect postage against loss, waste and stamp "borrowing" . . . and do your postage book-keeping, too.

SAVE TIME AND EFFORT Stamp, seal and postmark your mail. Eliminate stamp-sticking, envelope wetting — and the old stamp box.

SPEED YOUR MAIL THROUGH THE POST OFFICE Prepare mail so that it needs no post office facing or cancelling. As a result, outgoing mail often catches earlier trains or planes.

ELIMINATE OFFICE DRUDGERY Do away with tiresome wetting and sticking of stamps and envelopes — make employees happier on the job.

SPECIAL PARCEL POST FEATURE Print date of mailing on all your parcels, as well as letter mail. Ordinary adhesive stamped parcel carries no mailing date unless sent Special Delivery, etc.

BETTER APPEARANCE FOR YOUR MAIL Replace old-fashioned postage with the modern meter stamp, seen on the most important business and financial mail for more than 40 years.

METER ADVERTISING Print "meter ads" simultaneously with the meter stamps, at no extra cost except for printing plates.

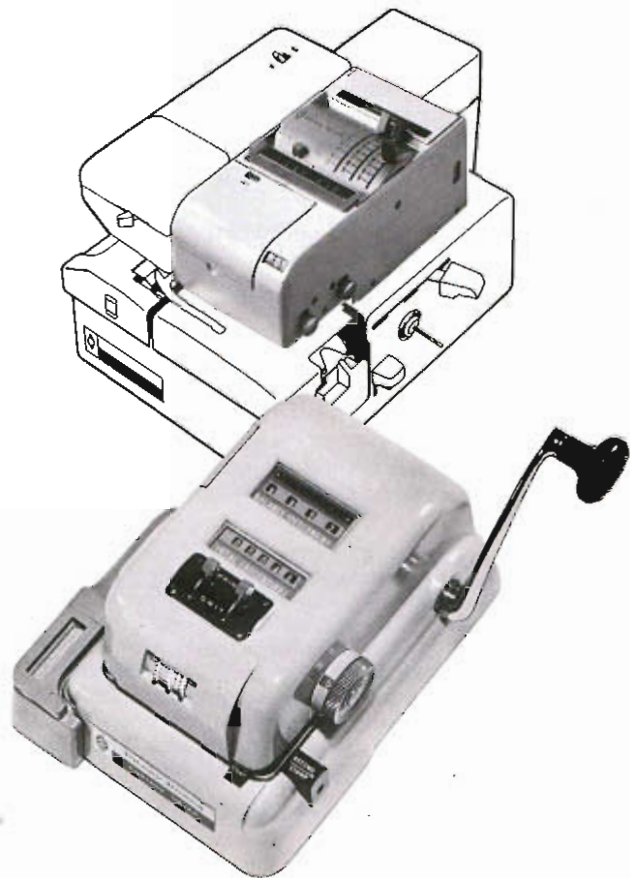
PLUS an important "Ninth Benefit": free assistance with postal and mailing problems through Pitney-Bowes' special postal consulting service. The knowledge and experience of trained personnel are always available when you need help.

*How Much Mail
Makes A
Postage
Meter
Practical?*



If you send out any mail from your place of business, it's sensible to think in terms of the basic advantages and convenience of metered mail. The answer cannot be made in terms of volume and frequency alone. For 5 letters may be as important to one business as 5,000 to another.

Most new users of the desk model meter mail fewer than 10 letters a day. Matter of fact, the proportion of such users is greater today than ever before. If your business is big enough to justify the use of a telephone and a typewriter, chances are it would be to your advantage to do away with the nuisance value of the stamp box and enjoy the benefits of metered mail.



How You Get A Postage Meter And Pay For Postage

Postage meter equipment generally consists of two parts: an office mailing machine and a detachable postage meter, the latter licensed for use by the Post Office Department. (The Model DM-3 combines both parts in one portable unit.) Since postage meters print U.S. postage and account for government revenue under official lock and seal, they cannot be sold outright, as are mailing machines, but are leased from an authorized manufacturer who is held responsible to the Post Office for their proper operation and replacement when necessary.

To buy postage, you simply take your meter to the nearest post office to have it "set." Postage is paid in advance, just as when buying ordinary stamps. But instead of buying and storing loose stamps in various denominations and quantities, or a bulky stock of pre-stamped envelopes, you simply have your meter "set" for one convenient lump sum. From this you print stamp values, as needed, right in your own office.

THERE'S A POSTAGE METER MAILING MACHINE FOR EVERY OFFICE LARGE OR SMALL.

1. MODEL DM-3 POSTAGE METER MACHINE This phone-size desk model brings metered mail to the smallest office. Low-cost, portable, hand-operated. Has moistener for sealing envelopes. Separate parcel post tape attachment included. *Most new users mail fewer than 10 letters a day.*

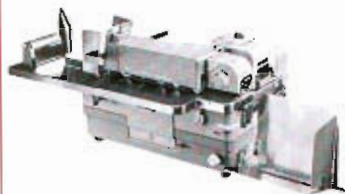
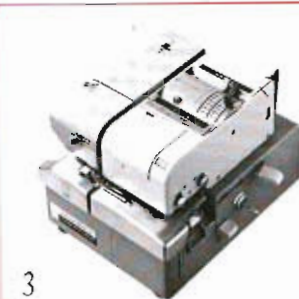
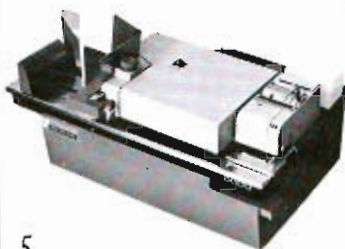
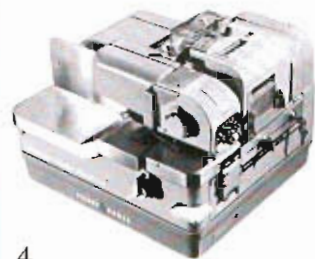
2. MODEL 5500 POSTAGE METER MAILING MACHINE Low-cost desk model with big machine advantages. Compact, efficient. Seals, imprints postage, stacks in one operation. Separate parcel post attachment included.

3. MODEL 5460 POSTAGE METER MAILING MACHINE New . . . a low-cost electric postage meter machine that's so compact it can be used on a desk top. Imprints postage, seals and stacks envelopes. Automatic parcel post tape dispenser. Converts to fully automatic envelope feed with optional attachment.

4. MODEL 4150 POSTAGE METER MAILING MACHINE Perfectly suited for use in shipping rooms as well as offices. Electrically operated, semi-automatic feed. Seals as it imprints postage. Supplies parcel postage on gummed tape automatically either dry or moist as desired.

5. MODEL 5600 POSTAGE METER MAILING MACHINE New, fully automatic mailing machine. Feeds, imprints postage, seals, stacks up to 170 letters per minute. Brand-new inking cartridge eliminates inker adjustments. Built-in parcel post tape dispenser.

6. MODEL 4351 POSTAGE METER MAILING MACHINE Handles 11,000 pieces an hour. Imprinted, sealed, stacked, counted. Completely automatic. Accommodates an exceptional range of envelope sizes, thicknesses and flaps. Built-in parcel post tape dispenser.



OTHER MONEY-SAVING PITNEY-BOWES PRODUCTS TO HELP YOU CUT COSTS

1. MODEL S-103 MAILING SCALE A precision mailing scale for letters and small packages. Computes in fractions of an ounce to 3 pounds. Seven other scale models available, including one for parcels up to 70 lbs.

2. MODEL 3300-FH FOLDING AND INSERTING MACHINE Combined folder-inserter automatically folds and stuffs in envelopes single enclosures (bills, bulletins, etc.) up to 4,000 an hour. For inserting operations in larger volume, see the Model 3144 Mail Inserting Machine.

3. 701 ADDRESSING CENTER Compact, portable, inexpensive. A complete addressing center to help you get started on your addressing program. Each stroke positions each plate and ejects previous plate into receiving stacker. Powered models available for larger mailers.

4. THE TICKOMETER This machine counts and/or imprints tickets, labels, checks, coupons, currency, etc., at speeds up to 1,000 per minute. For larger operations such as imprinting cartons, etc., ask to see the PB Package Imprinter.

5. MODEL 250 COPIER The new office copier that offers a combination of wanted features never before available in any electrostatic copier at anywhere near its low price.

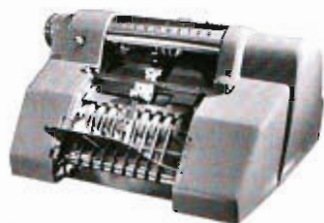
6. THOMAS GATHERETTE COLLATOR Desk-top Thomas Collating finishes collating jobs large and small 3 to 15 times faster than hand-assembling. Table-top and semi- and fully-automatic models also available.

Convenient leasing plans available.

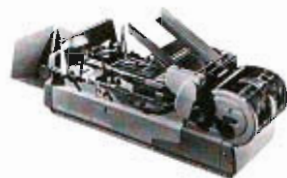
Our continuing product improvement program may bring about changes in specifications.



1



4



2



5



3



6



Finis



FROM COAST TO COAST
190 PITNEY-BOWES OFFICES
AT YOUR SERVICE



With all Pitney-Bowes products you get the advantages of expert *local* service by trained Pitney-Bowes servicemen. There are 385 service points, including 190 offices, in the U.S. and Canada. Call any Pitney-Bowes office whenever you want information or counsel. PB's special postal consulting service, based on nearly 45 years of experience with mailing and other office problems, will help you get the most from your postal dollar.



Pitney-Bowes INC

Walnut and Pacific Streets,
Stamford, Conn. 06904

Branch Sales & Service
Offices in principal cities
of the United States,
Canada and around the
world.

Originator of the Postage
Meter and Metered Mail.
World's Leading Manufac-
turer of Mailing Machines.